

# PLANNER GUIDE



Photo by Travel South Dakota

**South Dakota's Largest City**  
welcomes you with open arms

**Vibrant Downtown**  
lively atmosphere of dining, arts & history

**Premier Venues**  
impressive spaces for hosting

## VISION

---

Share the community of Sioux Falls with the world.

## MISSION

---

Market Sioux Falls as a one of a kind destination and provide an energized visitor experience to enhance economic impact.

Digital version available at:  
[ExperienceSiouxFalls.com/PlannerGuide](http://ExperienceSiouxFalls.com/PlannerGuide)





# WELCOME TO SIOUX FALLS

---

Experience Sioux Falls' first priority is the health and safety of our visitors, industry partners and residents. When you bring your group to our city, we are committed to helping you stay safe and informed. Our priority is and will always remain with you. We're ready when you are!



**Teri Schmidt**  
CEO of Experience  
Sioux Falls

From our city's namesake Falls Park to our fantastic recreational trails to our vibrant downtown and wide variety of restaurants and shops, Sioux Falls has much to offer. Our many restaurants, retailers, and hotels are ready to serve you. On behalf of our more than 200,000 residents, we hope you and your group have a wonderful stay in our community!



**Paul TenHaken**  
Mayor of Sioux Falls

## CONTENTS

---

- Experience Sioux Falls
- Things To Do
- Transportation
- Meeting & Hotel Facilities
- Sports Venues
- Travel Trade & Leisure

## EXPERIENCE SIOUX FALLS TEAM



### TERI SCHMIDT

CEO

teri@experiencesiouxfalls.com  
605.373.2030



### JAY KALTENBACH

Sales Manager

jay@experiencesiouxfalls.com  
605.373.2034



### ANNA DERRY

Director of Sales

anna@experiencesiouxfalls.com  
605.373.2025



### KATE SOLBERG

Sales Manager

kate@experiencesiouxfalls.com  
605.373.2024



### BRANDON VANT HUL

Sales Manager

brandon@experiencesiouxfalls.com  
605.373.2038



### BRIANA JEWELL

Services Manager

briana@experiencesiouxfalls.com  
605.373.2027



### JACKIE WENTWORTH

Sales Manager

jackie@experiencesiouxfalls.com  
605.373.2028



### KRISTA ORSACK

Director of Marketing

krista@experiencesiouxfalls.com  
605.373.2036



### EMILY SCHAFER

Creative Development Manager

emily@experiencesiouxfalls.com  
605.373.2012



### MARY HUBLU

First Impressions/Project Manager

mary@experiencesiouxfalls.com  
605.373.2035



### KATHIE PUTHOFF

Administrative Assistant

kathie@experiencesiouxfalls.com  
605.373.2032



### MATT BARTHEL

Communications Manager

matt@experiencesiouxfalls.com  
605.373.2045



### KATIE RONEY

Business Manager

katie@experiencesiouxfalls.com  
605.373.2039



### MELEA HARRIS

Host City Manager

melea@experiencesiouxfalls.com  
605.373.2026



## WHAT'S NEW?



### COMFORT INN & SUITES SANFORD SPORTS COMPLEX

The Sanford Sports Complex will have another lodging choice on the campus with the addition of a Comfort Inn & Suites, opening Spring 2023. This 86-room hotel joins the Fairfield Inn & Suites as two perfect overnight options for the many athletes competing at the Sanford Sports Complex.

### DAVE & BUSTERS

Whether you want to get competitive or just feel like a kid again, Dave & Buster's can scratch that itch for you. There are many different games to play, both solo and with a group. If you need a break, take a seat in the bar side where you can catch a game on the huge tv wall and enjoy some food and drinks.



### HIGHBALL

Highball quickly became a standout in downtown Sioux Falls shortly after opening its doors. Choose from a wide array of cocktails in this swanky atmosphere. They also have a few small food items such as the local favorite, crab Rangoon cheeseball served with fried wontons.

## WHAT'S NEW?

### NCAA DIVISION I HOCKEY

Augustana University is adding a NCAA Division I men's hockey team to its list of athletics. The Vikings will hit the ice at the start of the 2023-24 season at the Midco Arena, a 3,000-seat venue under construction on the Augustana campus. The team will compete in the Central Collegiate Hockey Association (CCHA).



### SANFORD SPORTS COMPLEX

The Sanford Sports Complex has become a go-to spot for sports event organizers, and it will soon be getting even more fields. The new addition will include five baseball fields, five softball fields, and eight multi-use fields. Each field will be turf and lighted. The fields are expected to be completed in fall 2022.

### STEEL DISTRICT

Restaurants, retail, apartments, office space, a hotel, and more are under construction at a site in downtown Sioux Falls known as the Steel District. The 216-room Canopy by Hilton will also include 20,000 square feet of convention space. The Steel District development will open in phases, with the hotel being the last to open in summer 2024.





It's easy to work hard –  
when you have a  
playground LIKE THIS.

EXPERIENCE SIOUX FALLS



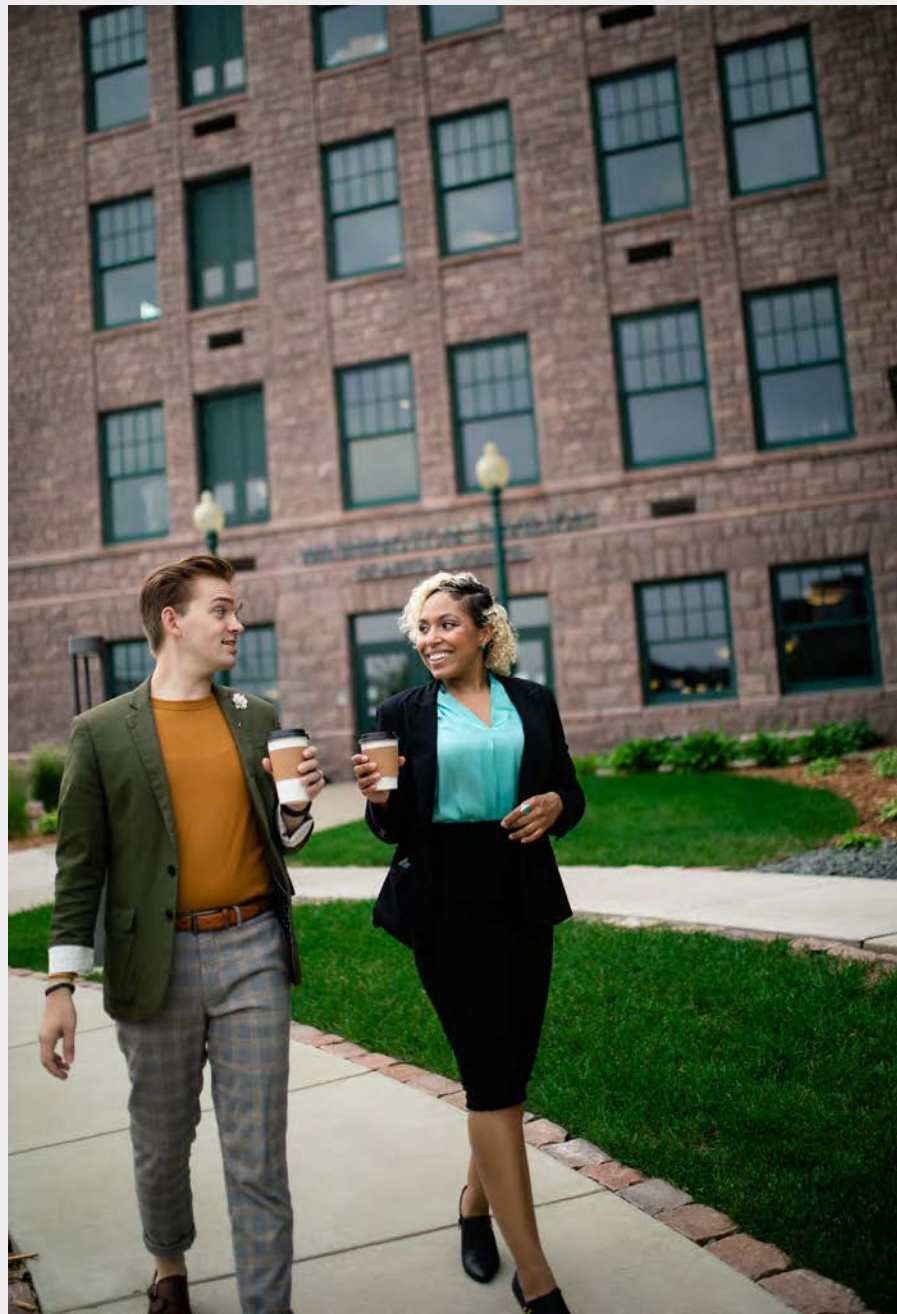


# MIDWEST NICE. INTERNATIONALLY KNOWLEDGEABLE.

---

## Experience Sioux Falls

wants you to do just that – experience the vibrancy of our city by hosting your event, meeting or convention here. We are a highly-dedicated team of professionals who will coordinate your planning every step of the way. From site selection and inspections, to accommodation bids, event and itinerary assistance, we have every resource available to plan and promote your event. Here, you will find genuine people and an exceptional Sioux Falls experience.





# WHO WE ARE

---

Experience Sioux Falls (ESF) is the official sales and marketing organization for the city of Sioux Falls as a 501(c)(6) under the auspices of two leadership groups: ESF Advisory Council and ESF Business Improvement District (BID) Board. The professional staff is comprised of an Chief Executive Officer, 14 full-time employees, and 20 part-time employees.

**We are a critically important economic engine for the city of Sioux Falls and state of South Dakota, creating jobs and fueling the economy by bringing meetings, conventions, sports, group tours, and travelers to Sioux Falls. We are advocates for continuous transformation of infrastructure directly related to travel and tourism growth. We are connectors for meeting planners, conference attendees, tour operators, sports event organizers, and travelers to our partners by orchestrating a symphony of resources to create great experiences. As professional ambassadors, we celebrate our love for the city and our passion for clients and visitors.**

Experience Sioux Falls is funded by a 1% tax on the gross receipts for hotel room rentals of lodging establishments within the city limits. On January 1, 2011 additional funding for Experience Sioux Falls, via a BID, became effective in order to provide funds for marketing and promotion of the visitor industry in the city of Sioux Falls (increasing room night sales of lodging facilities within the district).

ESF is not a membership-based bureau. Nearly 200 businesses are considered “partners” due to their paid advertisement in the Official Sioux Falls Visitor Guide, including attractions, hotels, venues, restaurants, and more. All hotels are equally represented due to the 1% hotel tax collected. Additional funding is secured through cooperative marketing and grant opportunities through the South Dakota Department of Tourism and Southeast South Dakota Regional Association.





## WEATHER AVERAGES

(IN FAHRENHEIT)

**SPRING**.....20°-70°

**SUMMER**.....56°-84°

**FALL**.....36°-65°

**WINTER**.....7°-37°

POPULATION  
**202,600+**

MSA:  
**276,730+**

## WHAT WE DO

Our priorities include sales and service efforts focused on filling city hotels, the Denny Sanford PREMIER Center Complex, and specialty venues through meetings, conventions, tradeshow, and sports development.

Sales also involves account management of domestic and international consumer trade partners including tour operators, receptive operators, and travel agents.

### Areas of Expertise:

- Act as a liaison between the planner and the community
- Match properties to specific meeting/event requirements and budgets
- Organize hotel room blocks
- Coordinate site selection and site inspections
- Gather accommodation bids and arrangements
- Provide promotional material to encourage attendance
- Event and itinerary assistance
- Professional registration assistance and name badges
- Press and media assistance
- Tours and city information
- Official welcomes
- Marketing and communications assistance
- Visitor Information Center with merchandise

With many years of experience, our team is committed to helping you achieve the goals and expectations for your event. We treat each event, small or large, with personal attention and want each one to be special and remembered by all who attend.



# SERVICES

---

## ON-SITE SERVICES

Experience Sioux Falls is a full-service destination management and marketing organization (DMO), offering professional services for conventions, meetings, sports, events, group tours, and leisure travelers.

**CONVENTION REGISTRATION ASSISTANCE** from trained, experienced, and knowledgeable ambassadors who also serve as greeters, registrars, or ticket takers.

**NAME BADGE** options are available including one-time use adhesive badges, plastic clip-on badges, elastic cord necklace badges, or ESF-branded lanyards. Name badges will be pre-printed.

**INFORMATION TABLE** to provide a variety of free resources highlighting things to do in Sioux Falls, services, maps, and other travel information. Ambassadors can also be available to answer questions.

## PROMOTION

**DIGITAL & PRINT MATERIALS** for pre-promotion attendance building or on-site distribution so attendees are informed and excited about visiting Sioux Falls.

- Custom pieces for specific interests
- Editorial copy
- Experience Sioux Falls logo
- Folders and bags
- High-resolution photos
- Maps
- Official visitor guide
- Promotional videos
- Sioux Falls FAQ
- Social media guidance

**PUBLIC RELATIONS ASSISTANCE** including press release creation and distribution, official welcomes, press conferences, and welcome letters from notable dignitaries.



## SIoux FALLS IS READY TO WORK WITH YOU!

---

### CONTACT:

Briana Jewell

Services Manager

[briana@experiencesiouxfalls.com](mailto:briana@experiencesiouxfalls.com)

605.373.2027

[experiencesiouxfalls.com](http://experiencesiouxfalls.com)





## MORE TO EXPLORE

---

Explore the city just like the locals do with assistance from Experience Sioux Falls. Upon request, additional activities can be provided including city tours, group outings, and family programs unique to our area. Plan in advance for special requests.

**CUSTOM ITINERARY PLANNING** to meet the interests of your group including timing and route design. Sample itineraries are also available.

**STEP-ON GUIDES** trained to provide a personalized tour of the city. Advanced reservations are required. Nominal fees apply.

**EXPERIENCESIOUXFALLS.COM** provides a wide variety of activity inspiration and ability to save your favorite places in Sioux Falls to match your travel lifestyle.

**APP** Use the app to explore everything in Sioux Falls including breweries, attractions, shopping, and so much more! Endless opportunities await.





# Natural WONDERS & Urban Indulgences.

THINGS TO DO







## CHOOSE SIOUX FALLS, AND YOU MAY HAVE A HARD TIME CHOOSING WHAT TO DO.

---

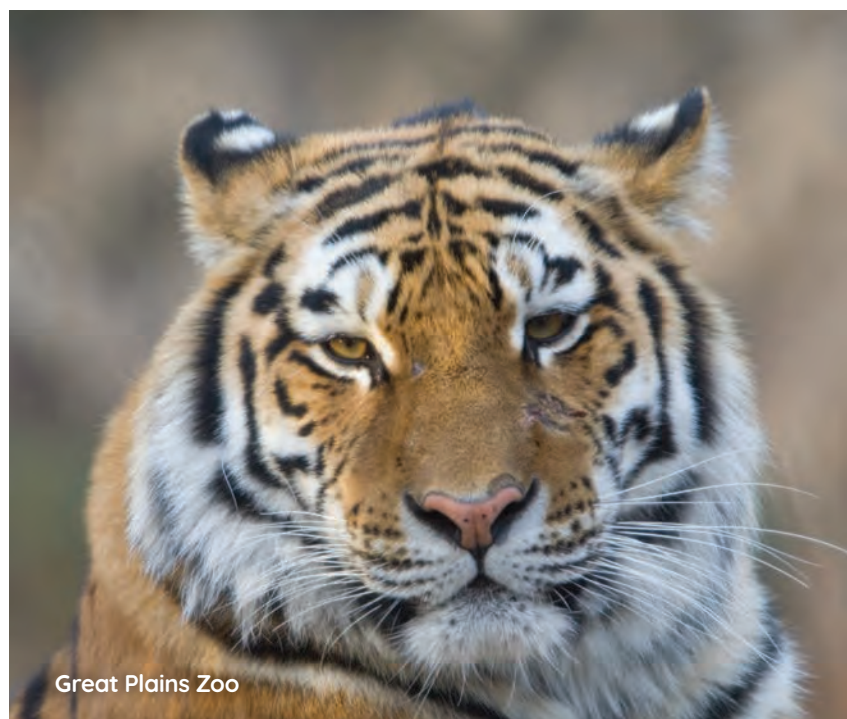
To truly experience Sioux Falls is to browse the historic shops of Phillips Avenue; stop for a taste of gourmet chocolate or at a farm to table deli; and take an evening stroll along the lit river greenway. Our world-renowned SculptureWalk is in the heartbeat of the city and is an excellent way to explore downtown. We invite you to visit the wineries and breweries which continue to flourish in our city and surrounding countryside. A short half hour drive – or less – reveals the beauty of some of our finest state parks.







Falls Park



Great Plains Zoo

## THINGS TO DO

### ARCHERY OUTFITTERS PROSHOP

1811 N. Lowell Ave.  
605.367.9871  
archeryoutfitterssf.com

Indoor and outdoor archery ranges with pro shop, retail and kayak and canoe rentals.

### BUTTERFLY HOUSE & AQUARIUM

4320 S. Oxbow Ave.  
605.334.9466  
butterflyhouseaquarium.org

Walk among the butterflies in a natural setting and take in the tranquility in an underwater world.

### CATFISH BAY

5500 Show Pl.  
605.339.0911  
catfishbay.com

The greatest show on H2O with weekly water ski performances and elaborate shows in the summer.

### CATHEDRAL OF SAINT JOSEPH

521 N. Duluth Ave.  
605.336.7390  
605.336.7392 (Tours)  
stjosephcathedral.net

The high steeples of this historic church are a Sioux Falls landmark, featuring a beautifully reconstructed interior.

### CENTER FOR WESTERN STUDIES

2121 S. Summit Ave.  
605.274.4007  
augie.edu/cws

Check out the Northern Plains library, archives, exhibits of Native American & regional cultures, and changing art shows.

### DAVE & BUSTER'S

2690 S Lorraine Pl.  
605.361.3894  
daveandbusters.com

There are many different games to play, both solo and with a group. Take a break in the bar with a huge tv wall and enjoy food and drinks.

### DENNY SANFORD PREMIER CENTER

1201 N. West Ave.  
605.367.7288  
dennysanfordpremiercenter.com

The region's premier sports and entertainment complex for touring music, local sports, national tournaments, and more.

### DOWNTOWN SIOUX FALLS, INC.

315 N. Phillips Ave.  
605.338.4009  
dtsf.com

Historic downtown featuring boutique shops, foodie finds, and a spectacular SculptureWalk just blocks from the river and Falls Park.

### FALLS PARK

900 N. Phillips Ave.  
605.367.7430  
experiencesiouxfalls.com

The cascading waterfalls of the Big Sioux River, surrounded by walking trails, historic building remnants, and an observation tower.

### FUNZONE ARCADE

2717 W. 41st St.  
605.271.8646  
pizzaranchfunzone.com

Hours of entertainment and the latest arcade style games for kids, families, groups, and more.

### GREAT SHOTS

2505 W. Benson Rd.  
605.312.7950  
greatshots.golf

Golf year-round in a state-of-the-art, multi-level driving range where you can eat, drink, and play.

# THINGS TO DO

## GREAT PLAINS ZOO

805 S. Kiwanis Ave.  
605.367.7003  
greatzoo.org

Family entertainment that's educational with hundreds of animals and 137 species.

## MIDCO® AQUATIC CENTER

1601 S. Western Ave.  
605.367.7665  
midcoaquaticcenter.org

A recreational pool with indoor water park, 50-meter pool, and warm water pool all under one roof.

## MUSEUM OF VISUAL MATERIALS

500 N. Main Ave.  
605.271.9500  
sfnvm.com

Hands on arts and crafts activities for kids and the community in a historic event venue that is one of the oldest - and greenest - downtown.

## OLD COURTHOUSE MUSEUM

200 W. 6th St.  
605.367.4210  
siouxlandmuseums.com

A local architectural marvel to our downtown with a three-floor exhibit of the region's history.

## ORPHEUM THEATER CENTER

315 N. Phillips Ave.  
605.367.6000  
siouxfallsorpheum.com

An iconic 868-seat theatre in the heart of downtown featuring concerts, plays, and is home to Sioux Empire Community Theatre.

## OUTDOOR CAMPUS

4500 S. Oxbow Ave.  
605.362.2777  
outdoorcampus.org

A sprawling network of wildlife trails, water features, educational displays, and grassland hikes all in the middle of the city.

## PETTIGREW HOME & MUSEUM

131 N. Duluth Ave.  
605.367.7097  
siouxlandmuseums.com

The story of Sioux Falls and surrounding region preserved in the home of South Dakota's first full-term senator.

## ROUGH CUT SOCIAL

119 W. 10th St.  
605.271.7717  
roughcutsocial.com

Gather your friends to the downtown location and release your inner lumberjack! Take part in the very popular axe throwing competition!

## SANFORD SPORTS COMPLEX

2210 W. Pentagon Pl.  
605.312.7900  
sanfordsports.com

The Sanford Sports Complex is a 500-acre development with venues for basketball, volleyball, hockey, tennis, football, soccer, golf, gymnastics, and athletic performance.

## SIOUX EMPIRE FAIR

100 N. Lyon Blvd.  
605.367.7178  
siouxempirefair.com

South Dakota's largest fair experience, held yearly in early August with concerts, midway carnival, exhibitions, and other fair attractions.

## SIOUX EMPIRE MEDICAL MUSEUM

1305 W. 18th St.  
605.333.6397

See how medicine has evolved over the last century from uniforms to photography to actual medical devices.

## SOUTH DAKOTA SYMPHONY ORCHESTRA

301 S. Main Ave.  
605.335.7933  
sdsymphony.org

Performing and celebrating live orchestral music for over a century.

## STOCKYARDS AG EXPERIENCE

301 E. Falls Park Dr.  
605.332.1917  
stockyardsagexperience.org

This converted barn highlights the connection between agriculture and daily life with learning experiences in science, culture, food, and the economy.

## SKY ZONE TRAMPOLINE PARK

5129 S. Solberg Ave.  
605.553.9910  
skyzone.com/siouxfalls

Bounce, jump, and dive into a foam pit or jump feet first into any of the indoor attractions and challenges.

## THUNDER ROAD FAMILY FUN PARK

201 N. Kiwanis Ave.  
605.334.4181  
thunderroadsiouxfalls.com

Go-Karts, mini golf, batting cages, 2-story laser tag, 7D theater, hyper bowling, and more make this an indoor and outdoor year-round must.

## U.S.S. SOUTH DAKOTA BATTLESHIP MEMORIAL

12th St. & Kiwanis Ave.  
605.367.7141  
ussouthdakota.com

A city park art installation and visitor center commemorating the most decorated ship in World War II.

## VETERANS MEMORIAL PARK

1021 W. Baily St.  
605.367.8222  
siouxfalls.org/veterans-memorial

Dedicated to the men and women of the United States military. A place to honor, remember, and reflect.

## WASHINGTON PAVILION

301 S. Main Ave.  
605.367.6000  
washingtonpavilion.org

A grand live performance venue that is also home to science and art museums to experience and explore.

## WILD WATER WEST WATERPARK

26767 466th Ave.  
605.361.9313  
wildwaterwest.com

One of our most popular summer experiences with waterslides, wave pool, lazy river, and ever-evolving features.

## BUT THERE'S MORE!

For more attractions, visit [experiencesiouxfalls.com](http://experiencesiouxfalls.com)





## DOWNTOWN OVERVIEW

---

Downtown Sioux Falls bustles with an eclectic vibe that is an experience not to be missed. Browse the charming streets of Phillips Avenue to take in unique shops and boutiques; dine in historic settings from casual to upscale to ethnic; all while soaking in sculptures, art, and the welcoming people.

Take in Uptown, East Bank, and each of our growing neighborhoods, all within walking distance from the next. Our downtown neighborhoods each offer a slightly different food, drink, and shopping vibe.

Visit the Old Courthouse Museum to get a sense of Sioux Falls' history or wander about and explore our various historic sites, statues, and landmarks on your own.

Nature is right next door, too. Stroll the Big Sioux River along the bike trail with a greenway that leads to stunning Falls Park. The rushing river drops over 100 feet, cutting through jagged outcroppings of quartzite and is an easy walk from the shops of downtown.

Historic structures like the Queen Bee Mill, Seney Island and the Light and Power Company building, now Falls Overlook Café, surround the park. Visitors can be rewarded with a breathtaking aerial view at the Falls Park Visitor Information Center's 50-foot viewing tower.

It all combines for unforgettable photos, a great green space to have a picnic and Sioux Falls' #1 tourist destination.

## ATTRACTIONS AND ENTERTAINMENT

---

You'll never run out of things to do or see. Explore the Imagination Studio at the Kirby Science Discovery Center in the Washington Pavilion, experience the habitat of over 800 free-flying butterflies at the Butterfly House & Aquarium, meet hundreds of animals at the Great Plains Zoo or walk through tallgrass prairies at the Outdoor Campus.

These indoor and outdoor attractions offer hands-on education and fun for children, families and leisure travelers alike.



# ARTS & CULTURE

Arts and culture happenings continue to grow and flourish in Sioux Falls. SculptureWalk, the Arc of Dreams, and Washington Pavilion are just a few of the centerpieces of our thriving scene.

Local artists, Native American craft work, First Friday exhibits, and various multicultural festivals make it easy to fill the calendar for a lover of arts and culture.



## ARC OF DREAMS

Arc of Dreams has to be witnessed to be believed. The landmark sculpture from South Dakota Artist Laureate, Dale Claude Lamphere, has become a breathtaking centerpiece of our skyline.

The monumental stainless steel sculpture spans across the Big Sioux River downtown nearly the length of a football field and is brilliantly illuminated at night. At the center of the Arc of Dreams is a 15-foot gap, 85 feet above the river, representing the leap of faith dreamers take to see their dreams come true.



**301 S. MAIN AVE.  
SIOUX FALLS, SD 57104  
PH: 605.367.6000  
SIOUXFALLSARCOFDREAMS.ORG**

## LEVITT AT THE FALLS

Levitt at the Falls is a landmark outdoor music venue located in Falls Park West on the edge of downtown. The stage marvel hosts up to 50 free outdoor concerts throughout the summer on a sloping green lawn.

The concert space is a family-friendly, pet-friendly gathering place for our diverse community. Local vendors serve up tasty cuisine, craft beer, and cocktails. Experience a warm summer evening coming to life to the sounds of music and the inclusive vibe that is unmistakably Levitt.



**504 N. PHILLIPS AVE.  
SIOUX FALLS, SD 57104  
PH: 605.271.1560  
LEVITTSIOUXFALLS.ORG**







## SCULPTUREWALK

SculptureWalk is a destination not to be missed, adding pizzazz and flair to our historic downtown. This exhibit of outdoor sculptures is displayed year-round and a wonderful excuse to explore the neighborhood and little side-street art surprises.

The colorful mixture of artists, styles, and often interactive displays changes yearly and has grown to become the largest and most recognized public exhibition of artwork in the country. Visitors are encouraged to grab a map and a ballot to vote for the People's Choice. Start or finish your journey at the Washington Pavilion SculptureWalk Visitor Center.



**301 S. MAIN AVE.**  
**SIOUX FALLS, SD 57104**  
**PH: 605.367.6000**  
**SCULPTUREWALKSIOUXFALLS.COM**

## MORE ARTS & CULTURE

### EASTBANK ART GALLERY

401 E. 8th St., Ste. 116  
 605.977.2667  
[eastbankgallery.com](http://eastbankgallery.com)

Explore a wide variety of mediums, techniques, and artists at Eastbank Art Gallery.

### EIDE/DALRYMPLE GALLERY

2001 S. Summit Ave.  
 605.274.4609  
[augie.edu/eidedalrymple-gallery](http://augie.edu/eidedalrymple-gallery)

The Gallery hosts an average of nine exhibits per year, and also exhibits the work of professional artists.

### REHFELD'S ART & FRAMING

431 N. Phillips Ave.  
 605.336.9737  
[rehfeldsonline.com](http://rehfeldsonline.com)

A downtown custom framing and art gallery, Rehfeld's makes the process of framing fun and easy.

### MULTI-CULTURAL CENTER OF SIOUX FALLS

515 N. Main Ave.  
 605.367.7401  
[sfmcc.org](http://sfmcc.org)

Experiences and services for all people to learn, celebrate, and share through our community's cultural diversity.

### MAIN STAGE BALLET & DANCE ACADEMY

2415 S. Sherman Ave.  
 605.333.9816  
[mainstageballet.com](http://mainstageballet.com)

A professional and exciting environment for children, teens, and adults to express themselves through dance.





## LET'S EAT!

The restaurant and foodie scene in Sioux Falls has exploded in recent years, attracting some of the country's most talented chefs to launch tantalizing and eclectic cuisine alongside classic local favorites.

From Mediterranean plates to farm-to-table surprises, the city boasts every flavor imaginable. Chinese, Thai, Mexican, Japanese or homestyle comfort food, the choices are endless. And our budding shops of chocolates, sweets, ice creams and gelatos make dessert always an option.

### DOWNTOWN

#### BOKI EUROPEAN STREET FOOD & GELATO

Jones421 Bldg.  
421 N. Phillips Ave.  
605.521.6542  
bokigelato.com  
bokistreetfood.com

For those with pure food indulgence in mind, come state your desires with famous gelato or ever changing internationally and seasonally inspired small plates.

#### BREAD & CIRCUS SANDWICH KITCHEN

600 N. Main Ave.  
605.338.2206  
breadandcircussd.com

Enjoy a chef-driven menu of sandwiches, salads, and sides in a casual environment.

#### CH PATISserie

309 S. Phillips Ave.  
605.275.0090  
chpatisserie.com

Come indulge in Chef Chris Hanmer's creatively crafted confections. From croissants to macarons, these European-style delights exude elegance and possess a unique flair.

#### CHEF LANCE'S ON PHILLIPS

431 N. Phillips Ave.  
605.271.7800  
cheflance.com

Think home cooked meals elevated. Chef Lance has taken the main elements of some of your favorite comfort foods and brought them to a whole new level, packed with flavor and full of delicious extras.

#### COFFEA ROASTERIE

200 S. Phillips Ave.  
605.362.9955  
coffearoasterie.com

Whether you need to fuel up your morning or perhaps you just need a quiet place to relax and recharge during the afternoon, Coffea Roasterie has you covered with a wide range of coffee, lattes, cold brews, and more.

#### COOKIE JAR EATERY

230 S. Phillips Ave.  
605.978.0991  
cookiejarsd.com

A neighborhood, family-owned store with homemade cookies & custom cakes, plus sandwiches & soups.



### **CRAVE FOOD & DRINK**

201 E. 8th St.  
605.782.2600  
cravesiouxfalls.com

Quality-sourced ingredients, chic ambiance, outstanding service, and diverse menu choices create an unforgettable dining experience. Located in the Hilton Garden Inn Downtown.

### **CRAWFORD'S BAR & GRILL**

214 S. Phillips Ave.  
605.332.5333  
crawfordssf.com

Shake things up with tempting steaks, seafood, sandwiches, innovative cocktails, and an extensive beer and wine list at Crawford's Bar & Grill in Sioux Falls' beautiful historic area.

### **DADA GASTROPUB**

402 N. Main Ave.  
605.444.4266  
dadagastropub.com

Enjoy an eclectic dining experience at DaDa Gastropub with the diverse menu selection that is sure to impress. The urban, art-filled warehouse vibe alone is worth a stop. Sip on a tasty cocktail to go with your meal.

### **HARVESTER KITCHEN BY BRYAN**

196 E. 6th St.  
605.271.2015  
harvesterkitchensf.com

A dining experience unlike any other in Sioux Falls. At Harvester Kitchen by Bryan, you will enjoy the level of detail you only find in 5-star restaurants. Chef Bryan and his team truly do not miss a beat as they serve you a meal you won't soon forget.

### **GRILLE 100**

100 W. 8th St.  
605.339.2000  
sfcchotel.com

Delightful cuisine for even the pickiest eaters in your group! Serving breakfast buffet or made to order items, lunch, dinner and a full bar make eating-in an easy option after a long day. Located in the Holiday Inn City Centre hotel.

### **INTOXIBAKES BOOZY BAKERY**

Jones421 Bldg.  
421 N. Phillips Ave.  
605.351.2789  
intoxibakesd.com

Yummy baked goods infused with alcohol. The perfect addition to almost any occasion!

### **JOSIAH'S COFFEEHOUSE, CAFÉ & BAKERY**

104 W. 12th St.  
605.759.8255  
josiahcoffee.com

Josiah's Coffeehouse and Cafe is more than just coffee and desserts. Aside from their well-known cheesecakes, they also offer catering and an event venue for your next special occasion!

### **LEONARDO'S CAFÉ**

301 S. Main Ave.  
605.367.6000  
washingtonpavilion.org

Next time you're at the Washington Pavilion, stop by Leonardo's Cafe for lunch. Fresh, kid-friendly, affordable and great-tasting.

### **MAMA'S LADAS**

116 W. 11th St.  
605.332.2772  
mamasladas.com

Sioux Falls' only Enchilada Shop & Wine Bar conveniently located in downtown Sioux Falls.

### **MACKENZIE RIVER PIZZA • GRILL • PUB**

236 S. Main Ave.  
605.275.5566  
mackenzieriverpizza.com

The menu features an incredible array of delectable dishes, always flavorful and fresh, and served up in heaping portions.

### **M.B. HASKETT**

324 S. Phillips Ave.  
605.367.1100  
mbhaskett.com

A quaint eatery that knocks it out of the park when it comes to food. Enjoy breakfast, lunch, or dinner. Be sure to check out the cool murals on the walls of the back patio.

### **DADA GASTROPUB**



## DOWNTOWN (CONTINUED)

### MINERVA RESTAURANT & BAR

301 S. Phillips Ave.  
605.334.0386  
minervas.net

With a menu that offers everything from classic pastas and in-house aged steaks to ocean fresh seafood, it's definitely going to please everyone's taste.

### ODE TO FOOD AND DRINKS

300 Cherapa Pl.  
605.275.6332  
odetofoodanddrinks.com

Stylish eatery offering eclectic American meat & seafood mains, plus a Bloody Mary bar, and live music.

### PAPA WOODY'S WOOD FIRED PIZZA

Cascades Bldg.  
775 N. Phillips Ave.  
605.376.3909  
papawoodypizza.com

Pizzas fresh to order, just the way you like it. Choose from a very extensive pizza menu, as well as a great selection of starters/appetizers.

### PARLOUR ICE CREAM HOUSE

340 S. Main Ave.  
605.271.0734  
parlouricecreamhouse.com

Think you know ice cream? Get ready for a surprise. More than an ice cream shop, Parlour is a chef-driven emporium where every scoop is a revelation.

### PARKER'S BISTRO

210 S. Main Ave.  
605.275.7676  
parkersbistro.net

Elegant restaurant in downtown Sioux Falls with a vintage vibe serving upscale American fare in a historic building.

### PHILLIPS AVENUE DINER

121 S. Phillips Ave.  
605.335.4977  
phillipsavediner.com

If you're in the mood for all-American food piled high in a retro dining atmosphere, stop by this downtown Sioux Falls favorite!

### PIZZA CHEEKS

120 S. Phillips Ave.  
605.271.0974  
mypizzacheeks.com

Located in the back of a tiki themed bar, The Hello Hi, sits a culinary delight. Pizza Cheeks serves up some of the best pizza in the city. Order a whole pie or grab it by the slice to pair with your mai tai.

### QUEEN CITY BAKERY

324 E. 8th St.  
605.274.6060  
queencitybakery.com

Traveling to find a good croissant or quiche is no longer necessary because Queen City Bakery is here to make your pastry-related dreams come true.

### R WINE BAR & KITCHEN

322 E. 8th St.  
605.271.0814  
rwinebar.com

This Italian inspired wine bar and restaurant offers 20 wines by the glass, 100 wines by the bottle, 12 craft beers on tap, a delicious menu filled with charcuterie, salads, pasta, entrees, and two beautiful event spaces.



Phillips Avenue Diner

### SANAA'S GOURMET MEDITERRANEAN

401 E. 8th St.  
605.275.2516  
sanaacooks.com

Mediterranean lunch spot with vegetarian and gluten-free options plus a Friday dinner buffet.

### STARBUCKS AT HILTON GARDEN INN DOWNTOWN

201 E. 8th St.  
605.444.4700  
siouxfalldowntown.hgi.com

Seattle-based coffeehouse chain known for its signature roasts, light bites and WiFi availability. Conveniently located in the Hilton Garden Inn Downtown.

### STENSLAND FAMILY FARMS AT THE FALLS OVERLOOK CAFE

825 N. Weber Ave.  
605.367.4885  
fallsoverlook.com

Enjoy ice cream straight from a local source. The Stensland family farm sits just a few miles east of Sioux Falls where they milk the cows and then use that fresh milk to make a variety of delicious ice cream flavors.

### SWAMP DADDY'S CAJUN KITCHEN

Jones421 Bldg.  
421 N. Phillips Ave.  
605.370.0711

A menu featuring classic, American Southern comfort dishes in a rustic space with exposed brick.

### THE TREASURY

100 N. Phillips Ave.  
605.679.5708  
thetreasurydtsf.com

Choose from a large selection of handcrafted cocktails at The Treasury. This unique cocktail bar located at Hotel On Phillips sits in a former bank vault, so there are remnants of its money filled past everywhere you look.





## EAST DISTRICT

### CHERRY CREEK GRILL

3104 E. 26th St.  
605.336.2333  
cherrycreek-grill.com

Laid-back bar & grill offering classic American grub and more than 20 brews on tap, plus numerous TVs to catch the game!

### COFFEA ROASTERIE

500 S. Highline Ave.  
605.362.9955  
coffearoasterie.com

Whether you need to fuel up your morning or perhaps you just need a quiet place to relax and recharge during the afternoon, Coffea Roasterie has you covered with a wide range of coffee, lattes, cold brews, and more.

### JACKY'S RESTAURANT

3308 E. 10th St.  
605.274.0588  
jackysrestaurants.com

Authentic, Guatemalan style cuisine. Voted Best Burrito in Sioux Falls.

### OH MY CUPCAKES!

3326 E. 10th St.  
605.310.6742  
ohmycupcakes.com

A locally owned cupcake store featuring gorgeous gourmet cupcakes made fresh daily and served in a fun, joyful atmosphere.

## HOSPITAL & UNIVERSITY DISTRICT

### AZTECA MEXICAN RESTAURANT

811 S. Minnesota Ave.  
605.335.0303  
azteca-sd.com

Serving colorful Mexican favorites such as arroz con pollo, enchiladas, and carne asada. Dishes are prepared by their personally-trained chefs.

## HOSPITAL & UNIVERSITY DISTRICT (CONTINUED)

### COFFEA ROASTERIE

2318 S. Louise Ave.  
605.362.9955  
coffearoasterie.com

Whether you need to fuel up your morning or perhaps you just need a quiet place to relax and recharge during the afternoon, Coffea Roasterie has you covered with a wide range of coffee, lattes, cold brews, and more.

### GILIBERTO'S MEXICAN TACO SHOP

712 S. Minnesota Ave.  
605.271.2013  
gilibertos1.com

A 24 hour Mexican taco shop serving tacos, burritos, nachos, and more!

### GRANITE CITY FOOD & BREWERY

2620 S. Louise Ave.  
605.362.0000  
gcfb.com

Enjoy some American comfort-food and grab one of their craft beers brewed onsite at this casual chain eatery.

### GRILLE 26 BY MINERVAS

1716 S. Western Ave.  
605.444.1716  
grille26.com

Seasonal American bistro fare is served in a relaxed space with light woods and a large bar.

### JACKY'S BURRITO EXPRESS

2315 W. 12th St.  
605.271.1104  
jackysburritoexpress.com

A branch of Jacky's Restaurant, a Sioux Falls favorite, serving burritos and other great Mexican food!

### KALADI'S BISTRO

1716 S. Minnesota Ave.  
605.339.3322  
kaladisbistro.com

You can find breakfast, burgers, surf 'n' turf & java drinks at this homey spot with a relaxed vibe.

### LALIBELA RESTAURANT

200 S. Kiwanis Ave.  
605.271.0747  
lalibela605.com

Take a culinary journey around the world at this Ethiopian eatery. Food Network's Diners, Drive-Ins and Dives featured Lalibela's dishes which are packed full of flavor.

### PICKLE BARREL

1612 S. Western Ave.  
605.275.3717  
picklebarrelsf.com

Sandwich Crafters" build your sandwiches to order with freshly baked bread and with the best ingredients that are prepared daily.

### ROAR CAFÉ AT GREAT PLAINS ZOO

805 S. Kiwanis Ave.  
605.367.7000  
greatzoo.org

Round out your visit at the Great Plains Zoo with a meal at the onsite Roar Café. Enjoy burgers, hot dogs, sandwiches, pizza, and more.

### SIoux FALLS FOOD CO+OP

410 W. 18th St.  
605.339.9506  
siouxfalls.coop

Not only can you shop for groceries here, but you can also grab a quick meal from the hot bar or order yourself a smoothie, sandwich, or salad.



ALL DAY CAFÉ

## MALL DISTRICT

### ALL DAY CAFÉ BY MINERVAS

2101 W. 41st St.  
605.274.7711  
alldaycafe.net

Café & bar with a patio featuring all-day breakfast, plus coffee, lunch, dinner & cocktails.

### CARNAVAL BRAZILIAN GRILL

2401 S. Carolyn Ave.  
605.361.6328  
carnavalbraziliangrill.com

Contemporary restaurant serving bottomless plates of Brazilian food, from skewered meat to salads.

### THE EMPIRE MALL

5000 W. Empire Mall  
605.361.3300  
shopempiremall.com

From sushi to sandwiches, tacos to burgers, you're sure to find something for everyone at the mall food court!

### FUDDRUCKERS

3101 W. 41st St.  
605.336.6282  
fuddruckers.com

American fast casual, franchised restaurant chain that specializes in hamburgers and shakes.

### JACKY'S RESTAURANT AT THE EMPIRE MALL

5000 W. Empire Mall  
605.271.5686  
jackysrestaurants.com

Authentic, Guatemalan style cuisine. Voted Best Burrito in Sioux Falls.

## MALL DISTRICT (CONTINUED)

### MORRIE'S STEAKHOUSE

2507 S. Shirley Ave.  
605.362.8125  
morriessteakhouse.com

A timeless classic. A Sioux Falls Chophouse presenting a variety of steaks & seafood in white-tablecloth accommodations.

### OH MY CUPCAKES!

5000 W. Empire Pl.  
605.310.6742  
ohmycupcakes.com

Grab a yummy cupcake for a mid-shopping craving! A kiosk dedicated to serving gorgeous gourmet cupcakes made fresh daily.

### PIZZA RANCH & FUNZONE ARCADE

2717 W. 41st St.  
605.271.8646  
pizzaranch.com

This duo was created with one goal in mind: to eat your favorite pizza while playing your favorite games!

### ROAM KITCHEN + BAR

4525 W. Empire Pl.  
605.215.0020  
roamkitchen.com

Savor the flavors of woodfire cooking with dishes like rotisserie chicken, brisket, ribs, and more.

### SICKIES GARAGE

2616 S. Louise Ave.  
605.271.7967  
sickiesburgers.com

Sickies offers a wide variety of freshly made extreme burger creations and craft beer pairings.

### STENSLAND FAMILY FARMS

3101 W. 41st St.  
605.271.0833  
stenslandfamilyfarms.com

The Stensland family farm sits just a few miles east of Sioux Falls where they milk the cows and then use that fresh milk to make a variety of delicious ice cream flavors.

### TAPHOUSE 41

2101 W. 41st St.  
605.274.9944  
taphouse41.com

Spacious pub offering many rotating taps of craft beer, plus bourbon tastings & upscale burgers.

### TERIYAKI MADNESS

4812 S. Louise Ave.  
605.271.1119  
teriyakimadness.com

Asian style rice and noodle bowls with your choice of protein and veggies, made fresh to order.

### THE ORIGINAL PANCAKE HOUSE

2715 W. 41st St.  
605.271.722  
originalpancakehouse  
siouxfalls.com

Start your day with a delicious breakfast. Omelets, bacon, waffles, and of course, pancakes. You name it, they have it all.



## NORTH DISTRICT

### REV IT UP GRILLE

201 N. Kiwanis Ave.  
605.334.4181  
thunderroadsiouxfalls.  
com

Take a break from the action at Thunder Road to sit down for a tasty burger, pizza, salad, and more. Don't forget to pair your meal with an ice-cold beer!

## SOUTH DISTRICT

### 22TEN KITCHEN COCKTAILS

2210 W. 69th St.  
605.271.1787  
22tenkitchen.com

Innovative, artisan plates, local favorites and everyday classics. Familiar beers and classic cocktails.

### DAILY CLEAN FOOD & DRINK

6215 S. Western Ave.  
605.271.1736  
dailycleanfood.com

The team at Daily Clean Food & Drink uses local, organic ingredients while keeping health top of mind, so you can feel confident with every meal choice here. The menu caters to every lifestyle, including vegetarian, vegan, gluten free, keto, and more.

### LET IT FLY

5001 S. Western Ave.  
605.274.3313  
letitflysportsbar.com

Former NBA star and South Dakota native, Mike Miller, opened Let It Fly to serve as a go-to place to catch the games for all your favorite sports teams. TVs can be found everywhere you look, so you will never miss a second of the action. An expansive covered patio is also available to enjoy the weather on those beautiful days.

## SOUTH DISTRICT (CONTINUED)

### LOOK'S MARKETPLACE

500 E. 69th St.  
605.336.3104  
looksmarket.com

Look's Marketplace is complete with a retail store, bakery, ice cream, meat counter, cheese, and a brewery! There is also a large restaurant area.

### MCNALLY'S IRISH PUB

6211 S. Old Village Pl.  
605.271.7170  
mcnallysip.com

Irish pub serving classic grub served in a traditional wood-paneled tavern with a casino gaming parlor & live music.

### OH MY CUPCAKES!

5015 S. Western Ave.  
605.310.6742  
ohmycupcakes.com

A locally owned gift shop and cupcake store featuring gorgeous gourmet cupcakes made fresh daily and served in a fun, joyful atmosphere.

### STENSLAND FAMILY FARMS

4712 E. 41st St.  
605.271.2962  
stenslandfamilyfarms.com

The Stensland family farm sits just a few miles east of Sioux Falls where they milk the cows and then use that fresh milk to make a variety of delicious ice cream flavors.

### THE ATTIC BAR & GRILL/ ASS'OCIATES & COMPANY

4601 E. 41st St.  
605.275.4600  
theatticsf.com

A lively bar and grill that serves great appetizers, food and drinks.





## SOUTHWEST DISTRICT

### CAPRIOTTI'S SANDWICH SHOP

2504 S. Marion Rd.  
605.271.7303  
capriottis.com

Capriotti's is a perfect stop for when you're on-the-go. They have both hot and cold sandwiches that are made ready to order. The Bobbie is a must-try, made with turkey, stuffing, mayo, and cranberry sauce.

### DAVE & BUSTER'S

2504 S. Marion Rd.  
605.361.3894  
daveandbusters.com

During your breaks between games recharge with wings, burgers, pasta, and more. With a large TV wall this is an ideal place to watch your favorite sports teams.

### SAKURA SUSHI

2400 S. Marion Rd.  
605.306.3288  
capriottis.com

Who says good sushi can't be found in the middle of the country? The chefs at Sakura use fresh seafood daily to create your classic sushi rolls, sashimi, and more.

### STENSLAND FAMILY FARMS

3221 S. Sertoma Ave.  
605.271.1726  
stenslandfamilyfarms.com

The Stensland family farm sits just a few miles east of Sioux Falls where they milk the cows and then use that fresh milk to make a variety of delicious ice cream flavors.

### T.C.'S REFEREE SPORTS BAR & GRILL

5322 W. 26th St.  
605.361.2208  
tcreferee.com

Longtime sports bar with 20 TVs featuring many beers on tap & a big menu of hearty American eats.

### THE ATTIC BAR & GRILL WEST

5213 W. 12th St.  
605.275.0005  
theatticsf.com

This neighborhood pub serves up delicious meals such as a grilled steak sandwich, buffalo chicken flatbread, and an Indian taco.

### THE SANDBAR AND GRILL

2310 S. Marion Rd.  
605.271.1806  
thesandbarsf.com

With a scratch made kitchen, they offer something for everyone. Whether indoors or outdoors, groups of most sizes can be accommodated.

## SPORTS & ENTERTAINMENT DISTRICT

### BLUE ROCK BAR & GRILL

4021 N. Bobhalla Dr.  
605.271.2500  
bluerockbarandgrill.com

Unique flavors and detailed touches give guests fine dining with the casual atmosphere. Appetizers, sandwiches, burgers, steaks, and more.

### BOSS' PIZZERIA & SPORTS BAR

1301 W. Russell St.  
605.336.1020  
siouxfallsramada.com

Locally owned and operated restaurant and bar serving up some of the best specialty pizzas, appetizers, and broasted chicken in town. Located inside the Ramada Hotel & Suites.

### CROOKED PINT ALE HOUSE

2020 W. Russell St.  
605.331.2050  
crookedpint.com/siouxfalls

Relaxed local pub chain serving craft beers & cocktails, plus burgers, pot pies, tacos & more.

### FALLING WATER GRILLE

1211 N. West Ave.  
605.331.0100  
marriott.com/fsdsi

Fill up on comfort food at Falling Water Grille, a Sioux Falls hub for American cuisine. Located in the lobby of the Sheraton Sioux Falls Hotel.

### FRANKIE'S SPORTS BAR & GRILL

3200 W. Maple St.  
605.336.0650  
bestwestern.com

Happy hour, nightly and gameday specials! Great food in a comfortable sports bar setting!

### MAPLE STREET CAFÉ

3200 W. Maple St.  
605.336.0650  
bestwestern.com

Classic Americana cuisine with all the favorites served for breakfast, lunch, and dinner.



# NIGHTLIFE AND BARS

Want an inventive cocktail in a classically restored landmark or a casual nightcap outdoors amid the downtown action? Nightlife and bars thrive in Sioux Falls.

Dance the evening away overlooking the city or venture to any of our neighborhood favorites where you're sure to meet the locals. Music, patios, dives, and dress-ups, they're all served up here.



## BRIX WINE BAR

330 S. Main Ave.  
605.212.1192  
brixwine.bar

Enjoy a wide range of wine from around the world in this chic wine bar. Order just a glass or a whole bottle.

## CARPENTER BAR

215 S. Phillips Ave.  
605.271.0983  
thecarpenterbar.com

Where Classic & Craft Meet. Carpenter Bar blends upscale drinks in an intimate space in historic downtown Sioux Falls.

## CRAWFORD'S BAR & GRILL

214 S. Phillips Ave.  
605.332.5333  
crawfordssf.com

Upscale American eatery & bar in a funky, brick-walled space that blends rustic and vintage accents.

## DETOUR BAR

2501 W. 10th St.  
605.271.0138  
detourbarsf.com

Themed after the many detours you take in life, the Detour Bar is a place you can get away with family and friends. A family owned bar with a clean, comfortable atmosphere and a fun menu of specialty drinks.

## GLACIAL LAKES DISTILLERY & BREWHOUSE

200 S. Main Ave.  
605.212.8977  
glaciallakesdistillery.com

Glacial Lakes produces bourbon, rum, gin, vodka, and brandy. Enjoy each spirit on its own or try it in a handcrafted cocktail.

## HIGHBALL

200 S. Main Ave.  
605.212.8977  
highball-bar.com

Choose from a wide array of cocktails in this swanky atmosphere. They also have a few small food items such as the local favorite, crab Rangoon cheeseball served with fried wontons.

## MONKS ALE HOUSE

420 E. 8th St.  
605.338.2328  
monks-sf.com

Visit Sioux Falls' original craft beer bar. Monks always has 50 rotating beers on tap for you to choose from. The pizzas are a must-try too!

## R WINE BAR & KITCHEN

322 E. 8th St.  
605.271.0814  
rwinebar.com

With an open kitchen, dining room, two lounge areas, R Wine Bar is more than just a wine bar. Located on the East Bank of downtown.

## TIKI BAR

1301 W. Russell St.  
605.336.1020

Located in the Ramada Hotel & Suites/Airport, the Tiki Bar offers specialty drinks, beer, and wine.

## THE HELLO HI

120 S. Phillips Ave.  
605.275.4544  
thehellohi.com

Feel the island vibes at The Hello Hi as you sip on one of their refreshing tiki cocktails. The chic yet tropical atmosphere of this place will keep you coming back for more. You can also grab a slice from the onsite Pizza Cheeks!

## THE TREASURY

100 N. Phillips Ave.  
605.679.5708  
thetreasurydtsf.com

Step into a unique, imaginative and classic setting. With decor, inspired by the historic buildings past, and innovative craft cocktails.

## VERDE LOUNGE

100 W. 8th St.  
605.339.2000  
sfcotel.com

Relax in the lobby of the Holiday Inn City Centre with a wide selection of dishes to choose from for lunch, dinner, or appetizers and drinks.

## WATERS EDGE LOUNGE

1211 N. West Ave.  
605.331.0100  
marriott.com/fsdsi

Open daily for breakfast, lunch, and dinner. Atrium lounge provides an intimate gathering place, with the soothing sounds of our two water features. Located in the lobby of the Sheraton Sioux Falls Hotel.

# WINERIES AND BREWERIES

Brewers and winemakers unite in their love for the craft. And the exploratory soul in search of a new local favorite does not have to look far. From numerous downtown breweries and local featured wines to rustic vineyards within minutes of the city, the hops and grapes are alive and well in South Dakota.

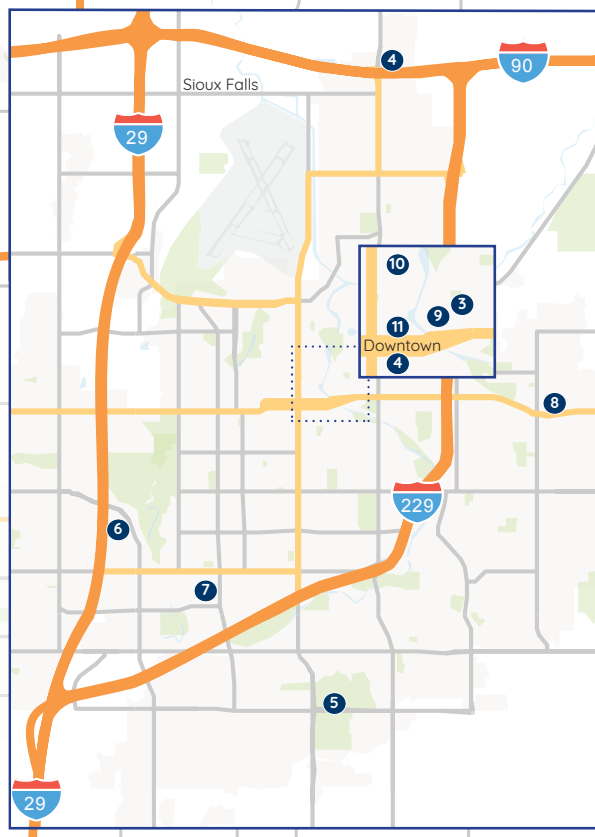
Explore them and you will find welcoming hosts ready to serve you a glass, pint and a story.

Want to get to know all the pilsners, stouts, IPAs, and local brews?



## Sioux Falls Breweries

- 1 A Homestead Brew
- 2 Buffalo Ridge Brewing
- 3 Covert Artisan Ales
- 4 Fernson Brewing Company
- 5 Look's Beer Co.
- 6 Lupulin Brewing
- 7 Miner Brewing Company
- 8 Obscure Brewing Co.
- 9 Remedy Brewing Company
- 10 Severance Brewing Company
- 11 WoodGrain Brewing Co.



Valley Springs

[ExperienceSiouxFalls.com/Breweries](https://ExperienceSiouxFalls.com/Breweries)



### **BUFFALO RIDGE BREWING**

102 N. Main Ave.  
Hartford, SD  
605.528.2739(BREW)  
buffaloridgebrewing.com

Hartford, SD is a hop, skip, and a jump away, just minutes North-West of Sioux Falls right off of I-90. Find not only freshly brewed beer, but an awesome experience at Buffalo Ridge Brewing.

### **COVERT ARTISAN ALES & CELLARS**

434 E. 8th St.  
605.359.5954  
covertartisanales.com

Covert Artisan Ales creates beer that is complex, funky, and delicious. Styles such as saisons and wheat ales are blended to bring you a unique beverage experience.

### **FERNSON BREWING CO. BREWERY & TAPROOM**

1400 E. Robur Dr.  
605.789.3822  
fernsong.com

Check out Sioux Falls' original production brewery, with an 1,800 sq. ft. taproom. Humbly made with people in mind. Proudly brewed in South Dakota.

### **FERNSON BREWING CO. DOWNTOWN TAPROOM**

332 S. Phillips Ave.  
605.789.2012  
fernsong.com

Fernson Downtown features a variety of beer on tap and a well-curated food menu. Stop by and let the Fernson crew showcase their offerings.

### **A HOMESTEAD BREW**

26685 486th Ave.,  
Valley Springs, SD 57068  
605.553.5015  
ahomesteadbrew.com

A Homestead Brew is grounded in the concept of being a farmhouse brewer, using ingredients from their hop farm and local sources when possible.

### **LOOK'S BEER CO.**

500 E. 69th St.  
605.336.3104  
looksmarket.com

Everything from light easy ales to big roasty stouts, hop bombs and balanced pale ale. At Look's Beer Co. they brew what you like.

### **LUPULIN BREWING**

2425 S. Shirley Ave.  
605.275.5544  
lupulinbrewing.com

Stop in for a beer, pick up a growler, or grab a 4-pack for later.

### **MINER BREWING CO. & PRAIRIE BERRY WINERY TAPROOM**

2101 W. 41st St.  
605.496.7175  
minerbrewingsiouxfalls.com

Craft Brewery & Winery Taproom producing classically styled beers of traditional, European flavor profiles, influenced by regional characteristics and ingredients of South Dakota and the Midwest.



### **OBSOLETE BREWING**

5200 E. Grant St.  
605.271.0193  
obscurebrewing.com

A comfortable taproom where you can join friends and family for the guarantee of a cold beer and a delicious bite to eat.

### **REMEDY BREWING COMPANY**

401 E. 8th St.  
605.271.6193  
remedybrewco.com

Spacious warehouse setting for house beers & flights paired with small plates & desserts.

### **SEVERANCE**

701 N. Phillips Ave.  
605.271.5480  
severancebeer.com

A place for friends to enjoy good beer and good conversations. Bring the kids, bring the dog, or just bring yourself - they'll provide the beer.

### **WILDE PRAIRIE WINERY**

48052 259th St.  
Brandon, SD  
605.582.6471  
wildeprairiewinery.com

Premier, locally-owned winery producing 100% South Dakota grown grape and fruit wines.

### **WOODGRAIN**

101 S. Phillips Ave.  
605.310.5316  
woodgrainbrew.com

WoodGrain Brewing Company is a local microbrewery specializing in quality handmade beers served in a warm, inviting, and comfortable taphouse in downtown Sioux Falls, South Dakota.





# SHOPPING

Sioux Falls has always been the premier shopping destination for the region, boasting large chains scattered amid local entrepreneurs offering all styles of fashion, art and jewelry. Not to mention, you can shop for anything from big store supplies (or hidden local prizes) to toys that surprise.

Each shopping destination in Sioux Falls is unique by design. Historic downtown, The Empire Mall, Lake Lorraine, The Bridges at 57th and Dawley Farm Village all have distinct personalities and findings both big and small.



## ANTIQUES ON 18TH

415 W. 18th St.  
605.988.0093  
antiqueson18thwebs.com

Since 1997, Antiques on 18th has been providing it's customers with a wide mix of items in a wide price range.

## ANTIQUES ON OLD 8TH STREET

614 E. 8th St.  
605.274.0114

Antiques, vintage, and collectibles. Jewelry, furniture, glassware, paper products and comics.

## ATHENA FIBERS

3915 S. Hawthorne Ave.  
605.271.0741  
athenafibers.com

Athena Fibers offers something for everyone from novice to expert. Stop in, pick out a pattern, some yarn, take a class, or just sit and visit about your current project.

## BELLA ROSA FLOWER MARKET

401 E. 8th St. Ave.  
605.271.2637  
bellarosamarket.com

From wedding arrangements to silk wreaths and memorial sprays, Bella Rosa brings creativity, style, and flair to each and every piece. All bouquets and arrangements are uniquely created to meet your specific requests.

## BLUMOON DESIGNS - JEWELRY, ART & GIFTS

222 S. Phillips Ave.  
blumoondesignsjewelry.com

Purses, accessories, craft kits, graphic t-shirts, hats, jewelry, and more can be found at BluMoon Designs.

## CHILD'S PLAY TOYS

233 S. Phillips Ave.  
605.274.8697

2568 S. Lorraine Pl.  
605.271.6374  
childsplaytoyssf.com

A unique toy shop for curious kids carrying toys, books, and clothing. The experienced staff will help you find the perfect gift! Find them in historic downtown or their new location at Lake Lorraine.

## DAKOTA PLAINS ANTIQUES & COLLECTIBLES

27110 Independence Ave.  
605.368.9999  
dakplains.com

Dakota Plains Antiques & Collectibles strives to retain a true "antique and collectible" venue. Their 60+ quality vendors abide by their basic policy "the majority of your items must be a bonified antique or collectible". Come and see their unbeatable selection for yourself!



#### **DULUTH TRADING CO.**

320 S. Phillips Ave.  
605.988.6043  
duluthtrading.com/stores

Innovative, problem-solving work and outdoor clothes for men and women. Shop clothing, accessories, and outdoor gear.

#### **JONES SEED CO.**

421 N. Phillips Ave.  
jones421.com

A contemporary urban marketplace offering food, drink and merch presented by independent local businesses in a sharing environment of openness, light and community.

#### **FALLS PARK VISITOR INFORMATION CENTER GIFT SHOP**

900 N. Phillips Ave.  
605.367.7430  
experiencesiouxfalls.com

Sioux Falls' largest selection of Sioux Falls memorabilia is available for purchase at the Visitor Information Center.

#### **KIDTOPIA**

901 S. Highline Pl.  
605.275.4825

Kidtopia Toy Store is a local favorite featuring quality toys, books, games, puzzles, arts & craft kits, educational items, seasonal fun stuff, and more for boys, girls and infants! It's zany, hands-on fun for all ages.

#### **GREAT OUTDOOR STORE**

201 E. 10th St.  
605.335.1132  
greatoutdoorstoreonline.com

A locally owned and operated outdoor shop offering apparel and gear from top of the line brands like Patagonia, Arc'teryx, Prana, The North Face, and many more!

#### **HAEGLE'S WESTERN WEAR & TACK**

2800 W. 41st St.  
605.332.8712  
haegleswest.com

108 years of experience, family-owned. The area's oldest and most complete western store featuring authentic, name-brand western clothing, and tack for the entire family.

#### **LEWIS DRUG STORES**

605.367.2000  
lewisdrug.com

In addition to pharmacies, Lewis neighborhood stores feature convenient services, gifts, everyday basics, and other unexpected finds at great prices.

#### **LOOK'S MARKETPLACE**

500 E. 69th St.  
605.336.3104  
looksmarket.com

In addition to our retail market full of fun gifts and everyday items, our food hall also features 4 kitchens that prepare food for our spacious dining room, bar, and 2 patios.

#### **HOME PORCH**

217 S. Phillips Ave.  
605.334.7507  
homeporchgifts.com

Make gift-giving easier and more pleasant for every party involved with one of our South Dakota-made products. Create customized gift baskets and gift boxes for all occasions.



### **MK THREADS BOUTIQUE**

222 S. Phillips Ave.  
605.271.5270  
mkthreadsboutique.com

Clothing Boutique offering womens fashion, juniors fashion, yoga wear, active wear, jeans, jewelry, handbags, affordable, inexpensive, and impeccable service.

### **MRS. MURPHY'S IRISH GIFTS**

219 S. Phillips Ave.  
605.333.9700  
888.687.7477  
mrsmurphys.com

Since 1997, the owners of Mrs. Murphy's Irish Gifts, have had the pleasure of selling the finest jewelry, clothing, food and gifts that they import from Ireland. You're sure to find something for yourself and all those special people in your life.

### **NYBERG'S ACE**

330 W. 41st St.  
605.336.6474  
nybergsace.com

"The Helpful Place." With 5 convenient locations and locally owned for 60 years, this chain retailer stocks household tools, grills, gifts, tips, supplies, and more.

### **PICKER'S ANTIQUE MALL**

47065 271st St.  
605.498.9500

Picker's is known for their wide selection of items and our exceptional customer service. You'll feel like family as soon as you walk through our doors.

### **POSH BOUTIQUE**

5019 S. Western Ave.  
605.271.2164  
poshboutiquesf.com

Helping women feel empowered and confident by supplying high quality clothing that fits their lifestyle and personality.

### **RUST & CO.**

5005 S. Western Ave.  
605.271.5356  
shoprustandco.com

RUST & Co. is a modern-day apparel retailer rooted in American style and brought to life by husband and wife co-creators Tom and Stacey Utrera.

### **SHARING THE DREAM GUATEMALA**

Jones421 Bldg.  
421 N. Phillips Ave.  
605.624.6895  
sharingthedream.org

Sharing the Dream is a fair trade organization that works to reduce poverty in Guatemala through collaborative partnerships with Guatemalans.

### **SHOP DOG BOUTIQUE**

5015 S. Western Ave.,  
Ste. #130  
605.838.5582  
shopdogboutique.com

Shop Dog Boutique is a Sioux Falls pet shop offering natural food, supplies, and toys for your four-legged friend. Voted one of the coolest pet stores in America!

### **SIOUX FALLS BICYCLE COMPANY**

1740 S. Cliff Ave.  
605.334.7666  
siouxfallsbicyclecompany.com

Sioux Falls Bicycle Company is a bike store with great selection of bikes and accessories, including mountain bikes, recumbent bikes, fat tire bikes, and touring bikes along with replacement parts and bike repair.

### **SPOKE-N-SPORT**

2019 S. Minnesota Ave.  
605.275.2453  
spoke-n-sport.com

Give your bike the makeover it deserves. Shop in-store or online and ride in style.

### **THE WESTERN MALL**

2101 W. 41st St.  
605.271.7346

Shop, dine, and play! Western Mall is home to West Mall 7 Movie Theater, Scheels All Sports, Best Buy, All Day Cafe, Taphouse41, HuHot Mongolian Grill, Papa Murphy's, Potbelly Sandwich Shop, Eileens Colossal Cookies, South Dakota Furniture Mart, The Man Salon, Hancock Fabrics, Try It Again Clothing, and more.





## THE BRIDGES AT 57<sup>TH</sup>

The Bridges at 57th is a taste of big city shopping that offers one of the most unique retail experiences in the region, beautifully connected in a plaza in the middle of the city.

Elegantly made up of dozens of smaller, locally-owned stores and boutiques, there are over 30 places to shop, dine, pamper and enjoy.



**57TH AND WESTERN**  
**SIOUX FALLS, SD 57108**  
**PH: 605.361.8211**  
**THEBRIDGESAT57TH.COM**

## DOWNTOWN

The charming shops of Phillips Avenue are uniquely South Dakotan, a variable mix of local owners featuring hidden discoveries to delight any shopper. Wander in the wonder of downtown shopping and you will definitely not leave empty handed.



**315 N. PHILLIPS AVE.**  
**SIOUX FALLS, SD 57104**  
**PH: 605.338.4009**  
**DTSF.COM**

## THE EMPIRE MALL

Over 110 shops of national chains and local sellers make The Empire Mall its own tourist destination. Fashion, food and fun make a distinct collection of shopping, dining and entertainment.



**5000 W. EMPIRE MALL**  
**SIOUX FALLS, SD 571046**  
**PH: 605.361.3300**  
**SIMON.COM/MALL/THE-EMPIRE-MALL**

## LAKE LORRAINE

Lake Lorraine is a mixed-use community built around a 33-acre lake with a placid lakeside walk. Diverse national shops and waterside dining are just the place to spend an afternoon. Easy to access and tempting to explore, Lake Lorraine is a must see for any visiting shopper.



**2400 S. LORRAINE PL.**  
**SIOUX FALLS, SD 57106**  
**PH: 605.929.9319**  
**LAKELORRAINESIOUXFALLS.COM**

## DAWLEY FARM VILLAGE

Dawley Farm Village is rooted in the East Side history of the Dawley family and 300 acres on the edge of the lush countryside.

This sprawling development of national retailers also features a movie complex and family friendly sports bar. Dawley offers a beautiful, village-like day of shopping where country and city meet.



**1000 S. HIGHLINE PL.**  
**SIOUX FALLS, SD 57110**  
**DAWLEYFARMVILLAGE.COM**



# OUTDOOR RECREATION

In South Dakota, we love the outdoors. That's why Sioux Falls and the city have worked tirelessly to preserve our outdoor treasures and make them a special place for visitors. From our namesake Falls Park wonder to our impressive park system to the kayak - friendly current of the Big Sioux River, our outdoor spaces are meant to be explored.



## OUTDOOR CAMPUS

The Outdoor Campus has all the amenities of outdoor adventure in the heart of the city. The sprawling acreage features natural landscape, water features and native grasses.

Visit the museum and explore the educational exhibits of the nature center or stretch your legs on two miles of walking trails, with bird watching and even a playground for the kids. Nature inspires here.



**4500 S. OXBOW AVE.  
SIOUX FALLS, SD 57106  
PH: 605.362.2777  
GFP.SD.GOV/TOC-EAST**



**FOR MORE INFORMATION**

on Sioux Falls parks, visit [siouxfalls.org/parks](http://siouxfalls.org/parks)

## CITY OF SIOUX FALLS PARKS

Sioux Falls is home to over 80 parks that have long been the jewels of our city. A beautifully maintained network of open greens for picnicking, disc golf, youth sports and more.

Largely connected by the Sioux Falls bike trail, the parks are diverse escapes to explore, take in the blue sky and reconnect with nature, friends, and family.



### DRAKE SPRINGS SKATE PARK

200 S. Fairfax Ave.

Take a ride on the wild side! Drop in from one of their ramps and cruise your way throughout this urban park filled with various ramps, jumps, and rails.

### KUEHN SKATE PARK

2501 S. Kuehn Park Rd.

Show off your skills with skateboards, inline skates, and BMX bikes.

### JAPANESE GARDENS

Terrace Park  
1100 W. 4th St.

Exotic flowers, entrance arbor, trees, pagodas and lanterns make up the unique Japanese Gardens near Covell Lake in Terrace Park.

### SPENCER PARK

3501 S. Cliff Ave.

Enjoy something for everyone with a 9-hole disc golf course playing through trees and prairie grass, sand volleyball courts and an accessible dog park.

### TOMAR PARK

100 W. Twin Oaks Rd.

Nestled next to the Big Sioux River, Tomar Park offers eight youth soccer fields and one adult field.

### TUTHILL PARK

3500 S. Cliff Ave.

This picturesque park features formal gardens, a disc golf course, a skating rink & picnic shelters.



## BIG SIOUX RECREATIONAL TRAIL AND RIVER GREENWAY

The Big Sioux Recreational Trail and River Greenway is a weaving path through the landmarks of Sioux Falls. A paved trail for bikers and walkers alike, the leisurely route is an excellent way to see the city.

Duck in and out of nature, traverse bridges over water, and follow the river to downtown – or circle the city and see it from all sides. Surprises reveal themselves along the way.

**231 N. DAKOTA AVE.  
SIOUX FALLS, SD 57104  
PH: 605.367.8222  
SIOUXFALLS.ORG/PARKS**



## GREAT BEAR RECREATIONAL PARK

Great Bear Recreational Park offers unlimited year-round fun and excitement just minutes away from downtown. With downhill skiing trails, a terrain park, tubing park, cross country skiing and snow shoeing, you don't have to drive far for a winter getaway.

In the summer, Great Bear provides phenomenal nature hiking along a 4-mile trail system with options ranging from easy to challenging. Take a casual stroll or make your way to the top for one of the best panoramic views of the city.



**5901 E. RICE ST.  
SIOUX FALLS, SD 57110  
PH: 605.367.4309  
GREATBEARPARK.COM**

# STATE PARKS

The South Dakota Game, Fish and Parks provides sustainable outdoor recreational opportunities through responsible management of our state's parks, fisheries and wildlife by fostering partnerships, cultivating stewardship and safely connecting people with the outdoors.



For more information, visit:

[gfp.sd.gov/parks](http://gfp.sd.gov/parks)

## GOOD EARTH STATE PARK

Good Earth State Park is just minutes southeast of Sioux Falls. This important cultural and historical site is a unique nature retreat and is one of the oldest sites of human habitation in the United States.

The river, abundant wildlife, sprawling flood plains, and rock formations still host traditional Native American ceremonies today – and provide a unique and spiritual respite and hiking destination with expansive views of the valley below.

**26924 480TH AVE.**  
**SIOUX FALLS, SD 57108**  
**PH: 605.213.1036**



## PALISADES STATE PARK

Palisades State Park is a collection of towering Sioux Quartzite rock formations, both beautiful and challenging to climbers. Split Rock Creek flows through the park with rushing waters among scenic overlooks.

This geographic wonder is over a billion years in the making and a popular eastern South Dakota destination, just 30 minutes from the city.

**25495 485TH AVE.**  
**GARRETSON, SD 57030**  
**PH: 605.594.3824**

Courtesy of South Dakota Tourism







THE CENTER  
of the country, at the  
TOP of our game.

TRANSPORTATION



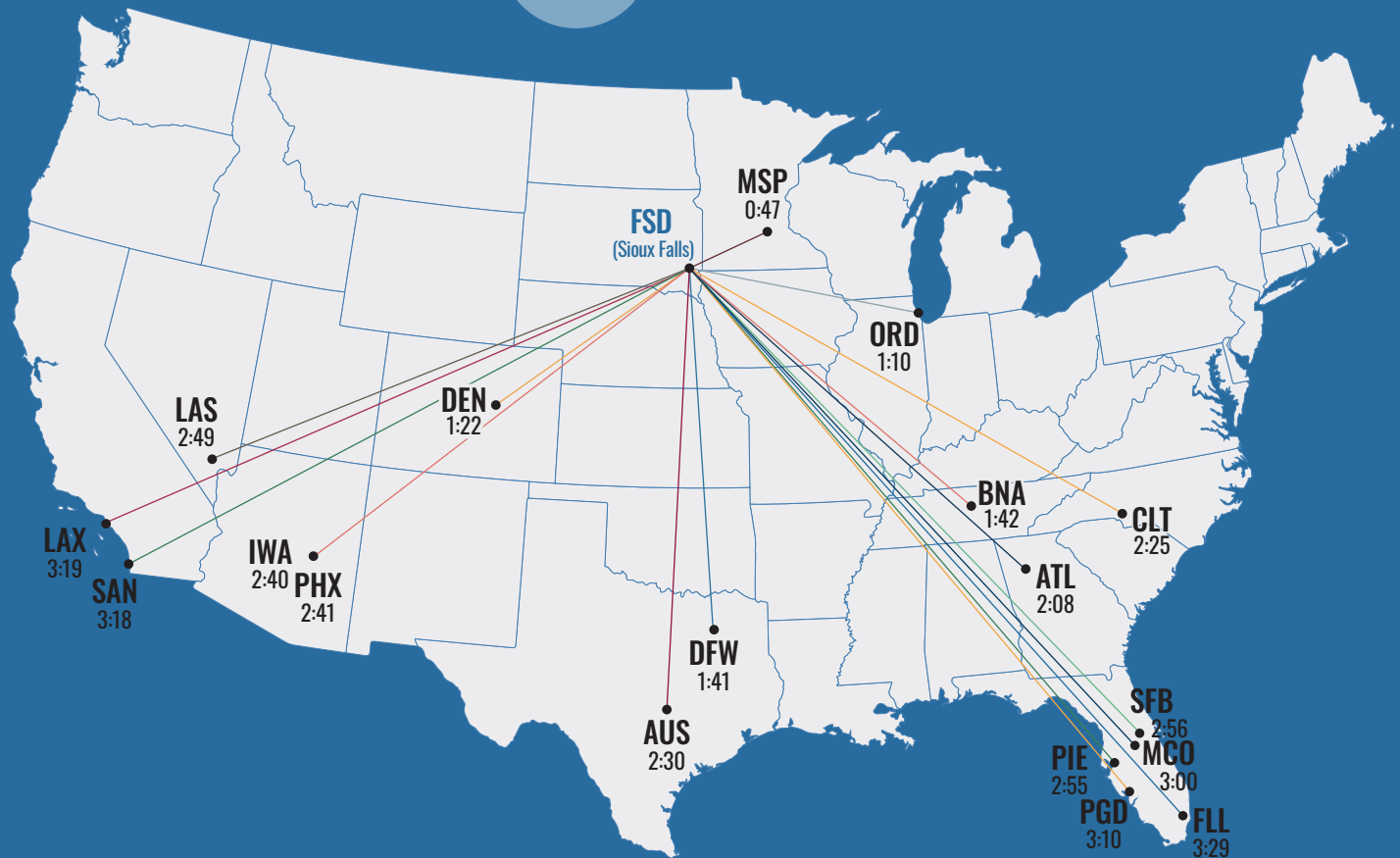
## AT THE INTERSECTION OF BUSINESS AND PLAY.

Direct daily flights to eight metro hubs is one thing, the intersection of two of our country's Interstates – I-90 and I-29 – is another. Whether your group will be driving, flying or a mix of both, getting here is easy. Once you're here, rent, Lyft, Uber, or walk on the wild side and catch a ride on our historic trolley. It's your visit and your choice of how you choose to explore our Midwest wonder. We also wouldn't blame you if you packed your bike or cross-trainers and jumped on our city-winding bike trail.





# TRANSPORTATION TO SIOUX FALLS



## NON-STOP PASSENGER SERVICE

The approximate time of flight is indicated with each destination city.

### MAP LOCATIONS:

ATL – Atlanta, GA*	2:08
DEN – Denver, CO*	1:22
DFW – Dallas, TX*	1:41
FLL – Ft. Lauderdale, FL*	3:29
IWA – Phoenix/Mesa Gateway, AZ	2:40
LAS – Las Vegas, NV*	2:49
MCO – Orlando, FL*	3:00
MSP – Minneapolis, MN*	0:47
ORD – Chicago, IL*	1:10
PHX – Phoenix/Sky Harbor, AZ*	2:41
SAN – San Diego, CA*	3:18
SFB – Orlando Sanford, FL*	2:56

### SEASONAL SERVICE ONLY:

AUS – Austin, TX*	2:30
BNA – Nashville, TN*	1:42
CLT – Charlotte, NC*	3:00
LAX – Los Angeles, CA*	3:19
PGD – Punta Gorda, FL (Charlotte Harbor/Ft. Myers)	3:03
PIE – Tampa Bay/St. Petersburg, FL*	2:55

\*Denotes International Port of Entry



## SIoux FALLS REGIONAL AIRPORT

The Sioux Falls Regional Airport offers direct flights to all the primary destination flight hubs and hundreds of one-stop flights to domestic and international locations. The airport is serviced by Allegiant, American, Delta, Frontier, and United airlines. Nearly one million travelers come through the airport each year with over 150 flights arriving and departing each week.



---

### SIoux FALLS REGIONAL AIRPORT

2801 N. JAYCEE LN.

SIoux FALLS, SD 57104

PH: 605.336.0762

[WWW.SFAIRPORT.COM](http://WWW.SFAIRPORT.COM)







A multi-million-dollar update and renovation was completed in 2019 to provide visitors with the most up-to-date features, expanded parking, safety assurances, expanded baggage claim area, additional restroom facilities, and international port of entry.

There is a 76-room AeroStay Hotel conveniently attached providing Eco-ficient®, executive king, and double queen rooms with fixed windows for noise reduction and blackout shades to block sound and light.

For private charter needs, Maverick Air Center and Signature Flight Support provide fuel and line service along with concierge and catering.

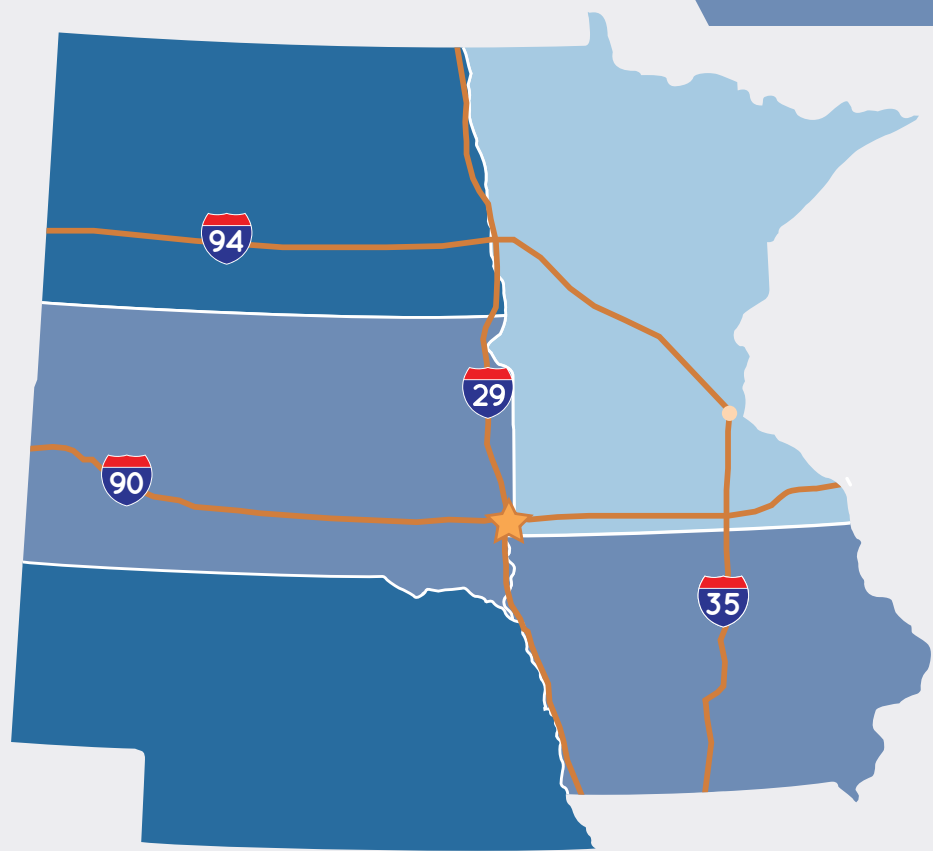
**MAVERICK AIR CENTER**  
**4201 N. MAVERICK PL.**  
**SIOUX FALLS, SD 57104**  
**PH: 605.312.5680**  
**WWW.MAVERICKAIRCENTER.COM**

**SIGNATURE FLIGHT SUPPORT**  
**3501 N. AVIATION AVE.**  
**SIOUX FALLS, SD 57104**  
**PH: 605.336.7791**  
**WWW.SIGNATUREFLIGHT.COM/LOCATIONS/FSD**



# MILES TO OTHER CITIES:

**SIOUX FALLS** is located within a day's drive from many of the major Midwestern metropolitan areas.



City	Miles from Sioux Falls	Drive Time (hours)
Chicago, IL	573	8.5
Kansas City, MO	363	5
Rapid City, SD	348	5
Des Moines, IA	283	4
Fargo, ND	244	3.5
Minneapolis, MN	237	4
Omaha, NE	181	2.5
Sioux City, IA	87	1.5
Mitchell, SD	74	1
Winnipeg, Manitoba, Canada	460	7





Our rolling prairie sunsets aren't  
our only PRIZED SPACES.

MEETING & HOTEL FACILITIES







## WE INVITE YOU TO DO SOME SPACE EXPLORATION.

---

Diversity in size, shape and capacity is the hallmark of our meeting space advantage. From the largest of floor footage requirements to a more intimate and uniquely cultural space, we accommodate you. And our primary

Convention Center at the Denny Sanford PREMIER Center connects with three other facilities under one roof, making it practically a city unto itself.

We provide unbiased information on services and facilities, and have robust data and statistics to help you plan. Our team is dedicated to doing the footwork to fulfill your vision.





## DENNY SANFORD PREMIER CENTER



The Denny Sanford PREMIER Center - composed of the PREMIER Center, Convention Center, and Arena (shown above) - houses sporting events, concerts, conventions, meetings, banquets, and more. Ample complimentary parking is available with easy access to each building as well as the nearby Howard Wood Field and Sioux Falls Stadium.

The Sheraton Sioux Falls Hotel is conveniently attached by a climate-controlled walkway and features 243 rooms. Over 1,000 hotel rooms can be found within a one-mile radius and the venue is just a short five-minute drive from the Sioux Falls Regional Airport.



### FEATURES

- 12,000 seats
- 30,000 square feet on main floor
- Easy access from Interstates I-90 and I-29
- Ample concert area
- NBA basketball court, seating 10,600
- NHL hockey rink, seating 10,600
- Indoor football field, seating 10,600
- Integrated LED video display system
- Four levels: Event Level, Main Concourse, Premium Level, Upper Concourse
- 22 suites and 18 loges on the Premium Level
- Over 3,500 free parking spaces

---

**1201 N. WEST AVE.  
SIOUX FALLS, SD 57104  
PH: 605.367.7288  
DENNYSANFORDPREMIERCENTER.COM  
MANAGED BY ASM GLOBAL**



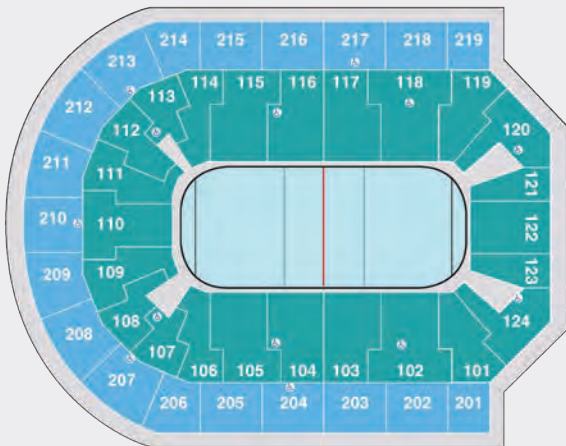
## CONCERT



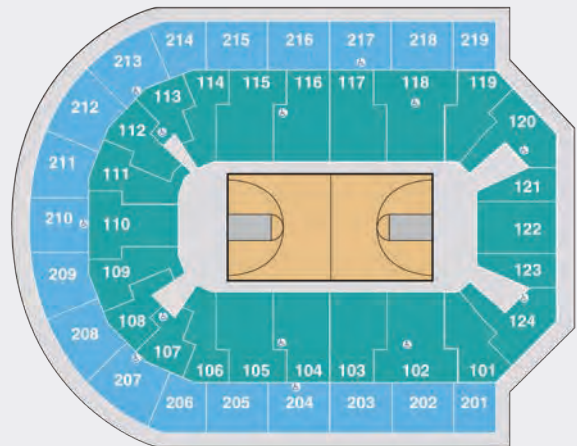
## THEATER



## HOCKEY



## BASKETBALL



**DENNY SANFORD**  
**PREMIER CENTER**

THE LARGEST VENUE BETWEEN  
OMAHA AND FARGO, AND  
FROM MINNEAPOLIS/ST. PAUL  
TO DENVER.

Photo Credit: Chad Mercurio



FLOOR

MAIN CONCOURSE

UPPER CONCOURSE





The Convention Center, attached to the Denny Sanford PREMIER Center, serves as a premier meeting location in the Midwest. The space is suited to function for a variety of events and includes exhibit space, ballroom space, and breakout rooms all with the latest on-site technology, services, and amenities.

The attached, full-service Sheraton Sioux Falls hotel, offers expanded ballroom, breakout, and board room spaces totaling over 5,600 square feet.

---

**1201 N. WEST AVE.**  
**SIoux FALLS, SD 57104**  
**PH: 605.367.7288**  
**DENNYSANFORDPREMIERCENTER.COM**  
**MANAGED BY ASM GLOBAL**

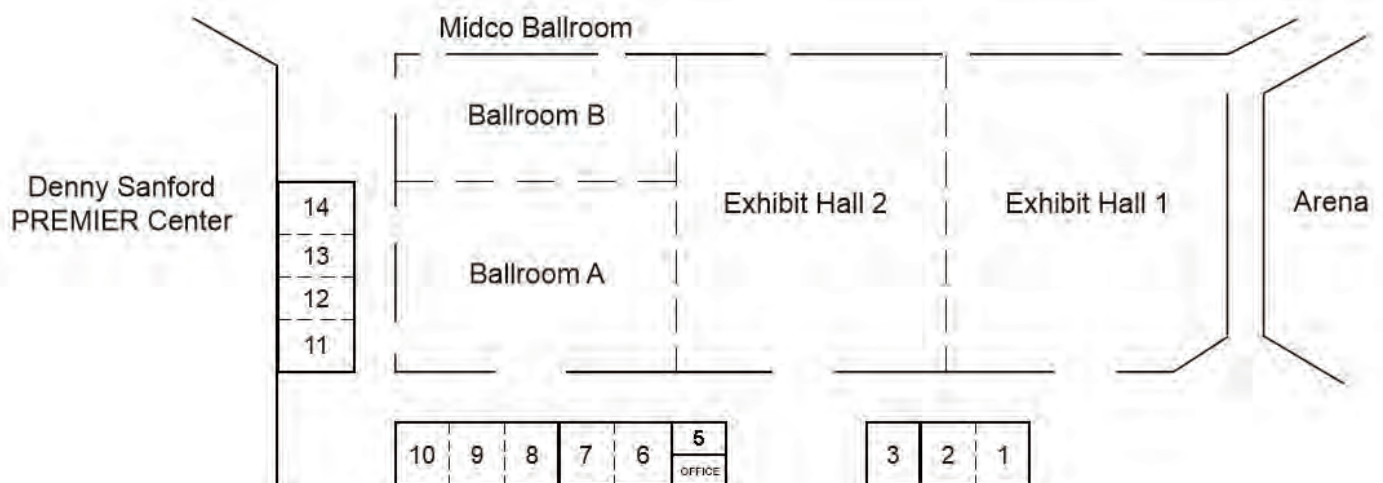
### FEATURES

- 13 professionally equipped meeting rooms
- 33,600 square foot exhibit hall with 25' ceilings
- 16,800 square foot ballroom with 25' ceilings
- Ballroom and exhibit hall connect to offer 50,400 square feet
- Four loading docks with direct access to exhibit hall
- Full utility services in exhibit floor
- Abundant pre-function space
- All-inclusive culinary services featuring award-winning chefs
- Experienced Event Managers
- In-house technical and media services
- In-house marketing and public relations support
- Free parking

Meeting Room Name	Dimensions	Sq. Ft.	BANQUET 72"	THEATER	CLASSROOM	U-SHAPE	RECEPTION
Exhibit Hall 1	120' x 140'	16,800	990	1,200	840	N/A	1,500
Exhibit Hall 2	120' x 140'	16,800	990	1,200	840	N/A	1,500
Grand Ballroom	120' x 140'	16,800	990	1,200	840	N/A	1,500
Ballroom A	120' x 80'	9,600	450	704	456	N/A	800
Ballroom B	120' x 60'	7,200	360	618	380	N/A	700
Exhibit Halls & Grand Ballroom	360' x 140'	50,400	3,190	3,600	2,520	N/A	4,500
Meeting Room 1	23.5' x 32'	752	40	60	40	30	50
Meeting Room 2	23.5' x 32'	752	40	60	40	30	50
Meeting Rooms 1-2	47' x 32'	1,504	80	115	80	N/A	100
Meeting Room 3	29' x 32'	928	40	72	55	30	75
Meeting Room 5	28' x 19.5'	456	20	48	18	N/A	25
Meeting Room 6	23.5' x 32'	752	40	60	40	30	50
Meeting Room 7	23.5' x 32'	752	40	60	40	30	50
Meeting Rooms 6-7	47' x 32'	1,410	80	115	80	N/A	100
Meeting Room 8	23' x 30'	690	40	60	40	30	50
Meeting Room 9	24' x 30'	720	40	60	40	30	50
Meeting Room 10	23' x 30'	690	40	60	40	30	50
Meeting Rooms 8-10	71' x 30'	2,130	120	200	136	N/A	200
Meeting Room 11	40' x 15'	600	30	30	20	N/A	40
Meeting Room 12	40' x 23'	920	50	72	48	30	80
Meeting Rooms 11-12	40' x 38'	1,520	80	100	88	N/A	120
Meeting Room 13	40' x 23'	920	50	70	48	30	80
Meeting Room 14	40' x 30'	1,200	60	98	72	34	100
Meeting Rooms 13-14	40' x 53'	2,120	120	180	128	N/A	200
Meeting Rooms 11-13	40' x 61'	2,440	130	170	160	N/A	200
Meeting Rooms 12-14	40' x 76'	3,040	150	290	200	N/A	280
Meeting Rooms 12-13	40' x 46'	1,840	120	150	88	N/A	160
Meeting Rooms 11-14	40' x 91'	3,640	190	268	188	N/A	300



# CONVENTIONS, MEETINGS, TRADESHOWS AND MORE



## SIoux FALLS ARENA



### SIoux FALLS ARENA

The Sioux Falls Arena is a multi-purpose venue that can host sporting events, add room for tradeshow booths, and serve as general session space.

**1201 N. WEST AVE.  
SIoux FALLS, SD 57104  
PH: 605.367.7288  
DENNYSANFORDPREMIERCENTER.COM  
MANAGED BY ASM GLOBAL**

### FEATURES

- 7,000 seats
- College basketball court
- Ample concert area
- 20,000 square feet on main floor
- 10,000 square feet of additional space in concourses
- Free parking

## ADDITIONAL VENUES

The Denny Sanford PREMIER Center Complex also features a premier track and field facility and minor league baseball stadium.

### HOWARD WOOD FIELD FEATURES:

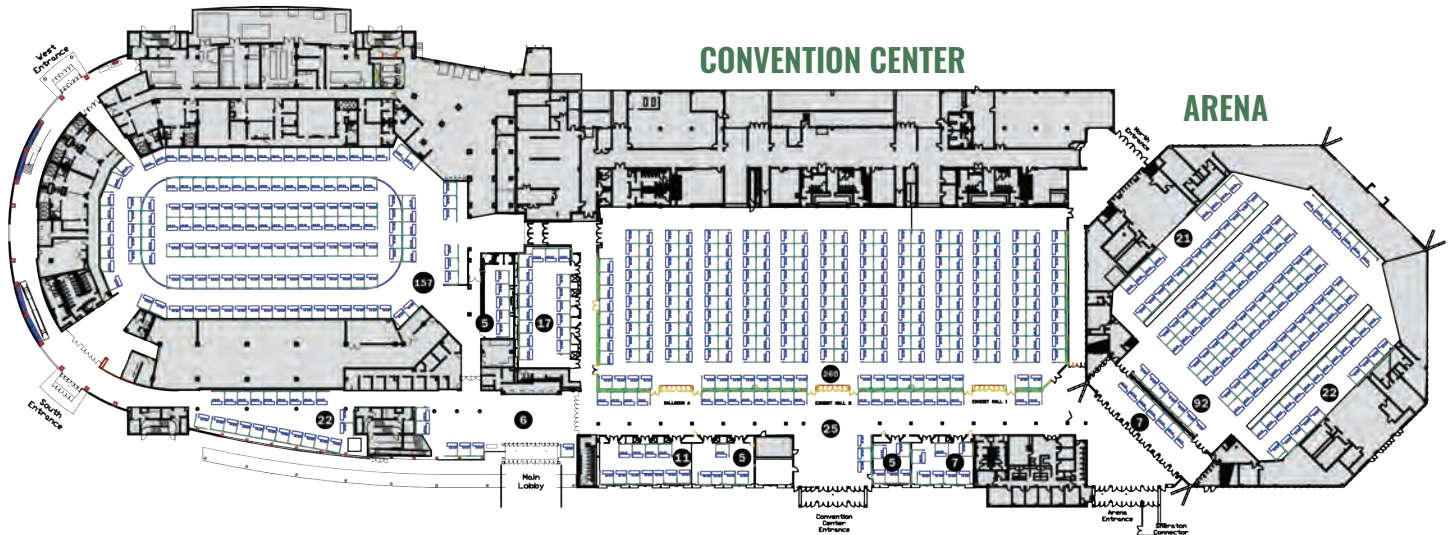
- 10,000 seats
- Two football fields or one soccer field
- 400-meter track
- Fieldhouse and locker rooms
- Lighting, sound, scoreboard, concessions
- Press box
- Free parking

### SIoux FALLS STADIUM FEATURES:

- Seats nearly 4,500 people
- Luxury box suites
- Expanded picnic area
- Grass berm down third base line
- Two ticket entrances
- Walkway area and two-level seating
- Onsite catering for corporate events
- Concessions
- Free parking



## PREMIER CENTER



## THE PREMIER CENTER COMPLEX

boasts over 132,000 square feet of flexible function space. Conventions and tradeshow can easily fit a maximum capacity of 664 standard (10' x 10') booths. Each venue can also serve on its own as an exhibit hall to compliment various event space layouts.

## PREMIER CENTER BOOTH CAPACITY

- Main Floor: 157
- Additional Concourses & Lobby: 33
- Total: 190

## CONVENTION CENTER BOOTH CAPACITY

- Exhibit Hall 1: 86
- Exhibit Hall 2: 88
- Grand Ballroom: 86
- Additional Concourses & Lobby: 70
- Total: 330

## ARENA BOOTH CAPACITY

- Main Floor: 97
- Additional Concourses & Lobby: 47
- Total: 144









## BEST WESTERN PLUS RAMKOTA HOTEL



The Best Western PLUS Sioux Falls Ramkota Hotel & Conference Center features 223 comfortable guest rooms, suites, and poolside rooms. The PLUS is all about additional amenities that add up to an enhanced level of comfort for guests. The Ramkota has been thoughtfully redesigned to suit the needs of any business or leisure traveler.

With over 60,000 square feet of function space, the Ramkota hosts local, regional, and national meetings and events from 20 to 2,000 people. Multi-function spaces include meeting rooms, amphitheaters, and a large exhibit hall.

Additional amenities include on-site Frankie's Sports Bar and Grill, indoor waterpark, complimentary citywide shuttle service, fitness center, pet friendly, and more.



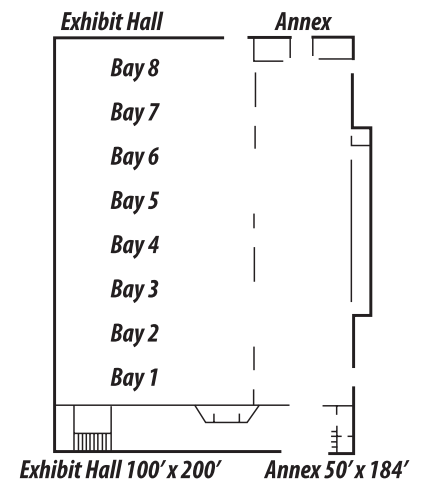
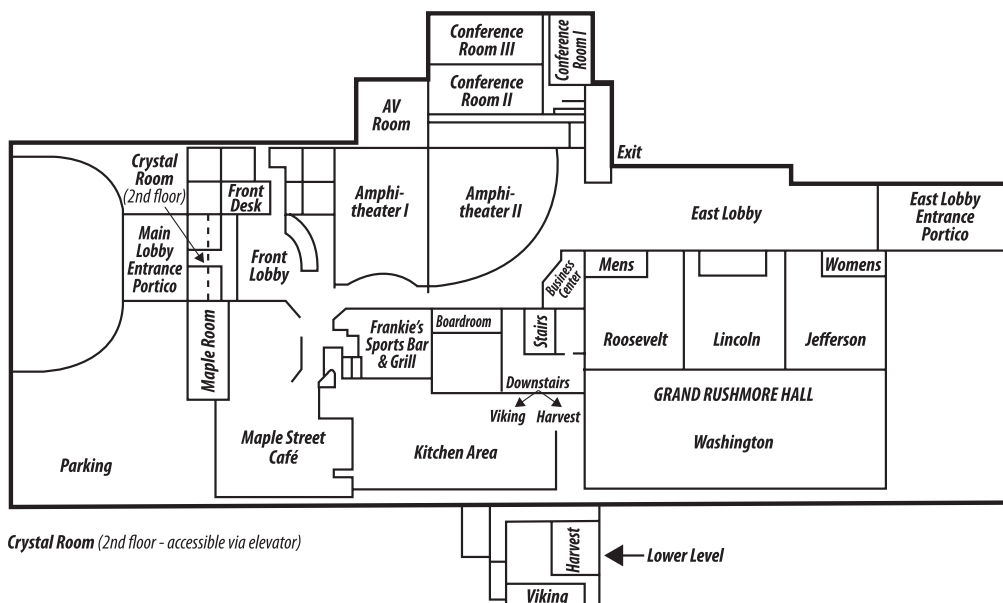
3200 W. MAPLE ST.  
SIOUX FALLS, SD 57107  
PH: 605.336.0650  
SIOUXFALLS.RAMKOTA.COM



# PROPERTY: BEST WESTERN PLUS RAMKOTA HOTEL

Meeting Room Name	Dimensions	Sq. Ft.	BANQUET 72"	THEATER	CLASSROOM	U-SHAPE	RECEPTION
Grand Rushmore Hall	110' x 100'	11,000	600	1,500	700	N/A	916
Washington Room	50' x 110'	5,500	300	700	350	N/A	458
Roosevelt Room	33' x 50'	1,650	90	175	100	45	137
Lincoln Room	33' x 50'	1,650	90	175	100	45	137
Jefferson Room	33' x 50'	1,650	90	175	100	45	137
Amphitheater 1	N/A	2,184	100	100	100	N/A	N/A
Amphitheater 2	N/A	1,696	158	158	158	N/A	N/A
Conference Room 1	32' x 12.5'	400	16	16	16	N/A	N/A
Conference Room 2	20' x 40'	800	40	60	30	30	66
Conference Room 3	20' x 40'	800	40	60	30	30	66
Maple Room	24' x 30'	720	32	40	24	21	60
Crystal Room	20' x 40'	800	40	60	30	30	66
Harvest Room	40' x 70'	2,800	140	300	150	45	233
Viking Room	24' x 32'	768	40	70	36	21	64
Exhibit Hall	100' x 200'	20,000	1,300	3,000	1,150	N/A	1,666
Annex	50' x 184'	9,200	550	1,000	500	N/A	766

Meeting Room Name	Dimensions	Sq. Ft.	CONFERENCE
Boardroom	35' x 16'	560	12







The Holiday Inn City Centre is located in the heart of downtown Sioux Falls. The hotel features 290 superb sleeping rooms with rich, warm colors and contemporary decor from standard rooms to suites or upgrade to a two-room suite with private concierge and extra perks.

Over 15,000 square feet of meeting, convention, and banquet space is available to host conferences or gatherings ranging from 10 to 1,300. Leisure and business travelers enjoy the location and professional services all within walking distance to attractions, shopping, dining, and more.

Additional amenities include on-site Grille100 and Verde Lounge restaurant and bar, complimentary airport shuttle service, fitness center, business center, heated pool, and more.



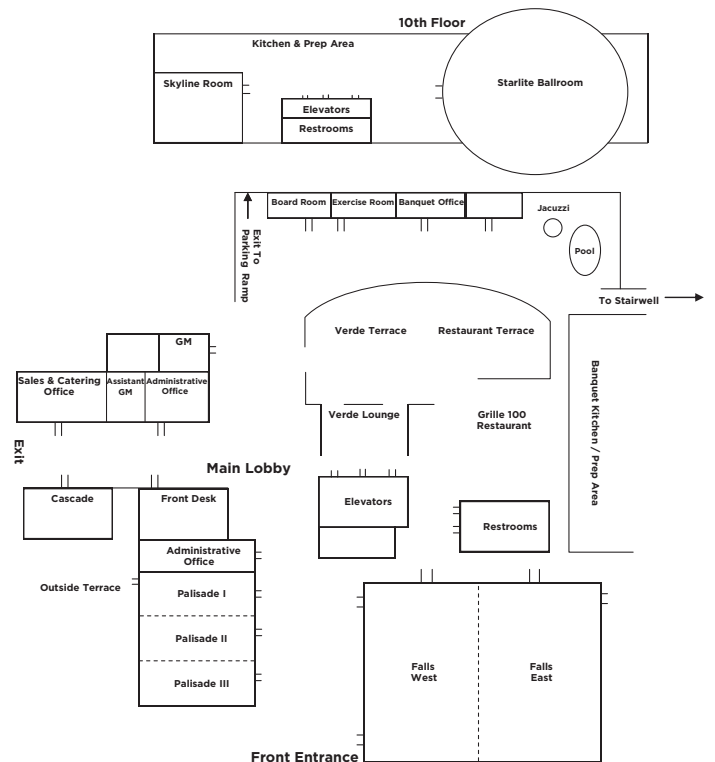
100 W. 8TH ST.  
SIOUX FALLS, SD 57104  
PH: 605.339.2000  
SFCCHOTEL.COM



## PROPERTY: HOLIDAY INN CITY CENTRE

Meeting Room Name	Dimensions	Sq. Ft.	BANQUET 72"	THEATER	CLASSROOM	U-SHAPE	RECEPTION
Falls East	36' x 80'	2,880	224	333	160	68	260
Falls West	36' x 80'	2,880	224	333	160	68	260
Falls East & West	72' x 80'	5,760	504	665	320	136	523
Palisades I	36' x 18'	648	40	70	36	34	60
Palisades II	36' x 15'	540	24	48	20	16	49
Palisades III	36' x 19'	684	40	70	36	34	62
Palisades Room	36' x 52'	1,872	120	210	100	62	170
Palisades I & II	36' x 33'	1,188	64	118	56	40	108
Palisades II & III	36' x 34'	1,224	64	118	56	40	64
Cascade	34' x 17'	576	40	63	30	20	40
Skyline	45' x 30'	1,350	96	155	65	36	96
Starlite Ballroom	Round	4,300	304	350	180	72	300

Meeting Room Name	Dimensions	Sq. Ft.	CONFERENCE
Boardroom	14' x 18'	187	10





## HILTON GARDEN INN DOWNTOWN



The Hilton Garden Inn Downtown boasts an ideal location for meetings and events along the Big Sioux River in downtown Sioux Falls. The hotel features 136 rooms including upgraded river view suites.

Over 9,000 square feet of function space includes six meeting rooms and flexible pre-function space for meetings, conferences, and banquets. Conference and boardroom style offer rooms set for 12-24, and banquet seating for up to 370 with 17' ceilings. The space comes equipped with on-site audio-visual, sound, and decorating services.

Upscale services are provided from on-site restaurant, CRAVE America, and riverside patio to underground parking and direct access to the River Greenway. Menus can be customized to fit budget and scale.

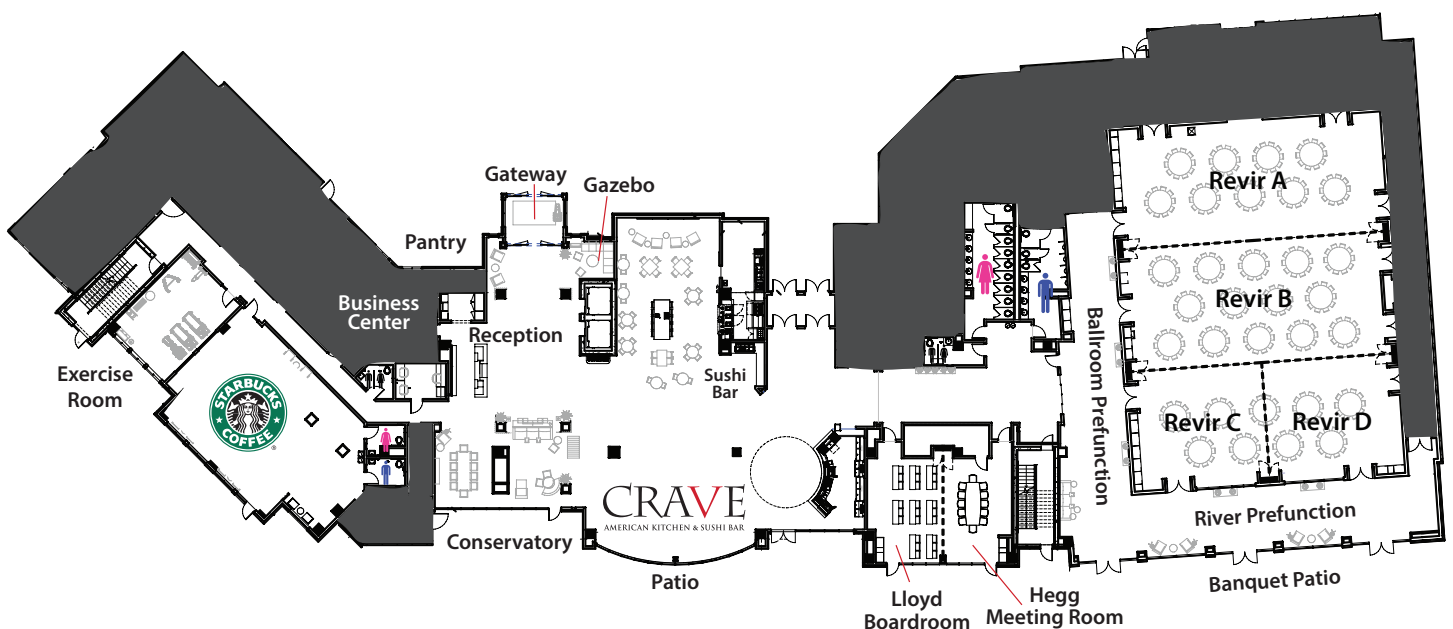
Additional amenities include on-site Starbucks Coffee, complimentary airport and area shuttle service, fitness center, business center, security services, and more.



**201 E. 8TH ST.**  
**SIOUX FALLS, SD 57103**  
**PH: 605.444.4700**  
**[SIOUXFALLSDOWNTOWN.HGI.COM](http://SIOUXFALLSDOWNTOWN.HGI.COM)**

# PROPERTY: HILTON GARDEN INN DOWNTOWN

Meeting Room Name	Dimensions	Sq. Ft.	BANQUET 72"	THEATER	CLASSROOM	U-SHAPE	RECEPTION
Revir Ballroom A-D	90' x 30'	5,800	370	700	300	N/A	600
Revir A	60' x 30'	1,800	100	200	110	40	200
Revir B	60' x 30'	1,800	100	240	120	40	200
Revir A-B	60' x 60'	3,600	200	400	160	80	400
Revir C	30' x 30'	900	40	60	32	30	200
Revir B-C-D	60' x 60'	3,600	250	500	160	80	600
Revir D	30' x 30'	900	40	60	32	30	200
Revir C-D	60' x 30'	1,800	100	200	110	40	400
Hegg Meeting Room	18' x 25'	450	20	40	12	12	25
Lloyd Meeting Room	18' x 25'	450	20	40	12	12	25
Hegg/Lloyd Combo	36' x 25'	900	40	80	24	24	50





## SHERATON SIOUX FALLS



Boasting modern comfort and convenience, the Sheraton Sioux Falls and Convention Center is an ideal place to stay for business and leisure travelers. The hotel features 243 elegantly furnished rooms and suites. Nearby you will discover a lively downtown, Elmwood Golf Course, Sanford Sports Complex, and Sioux Falls Baseball Stadium.

With over 5,600 square feet of meeting space, conference rooms are available for all types of events, from small training sessions to large meetings. Overflow space is conveniently located in the attached Convention Center and Denny Sanford PREMIER Center. Impress meeting attendees with a delicious custom menu made from in-house catering options along with modern audio-visual equipment to enhance presentations and boost productivity.

Savor on-site delights, including drinks at Water's Edge Bar in an open atrium and dining at Falling Water Grille.

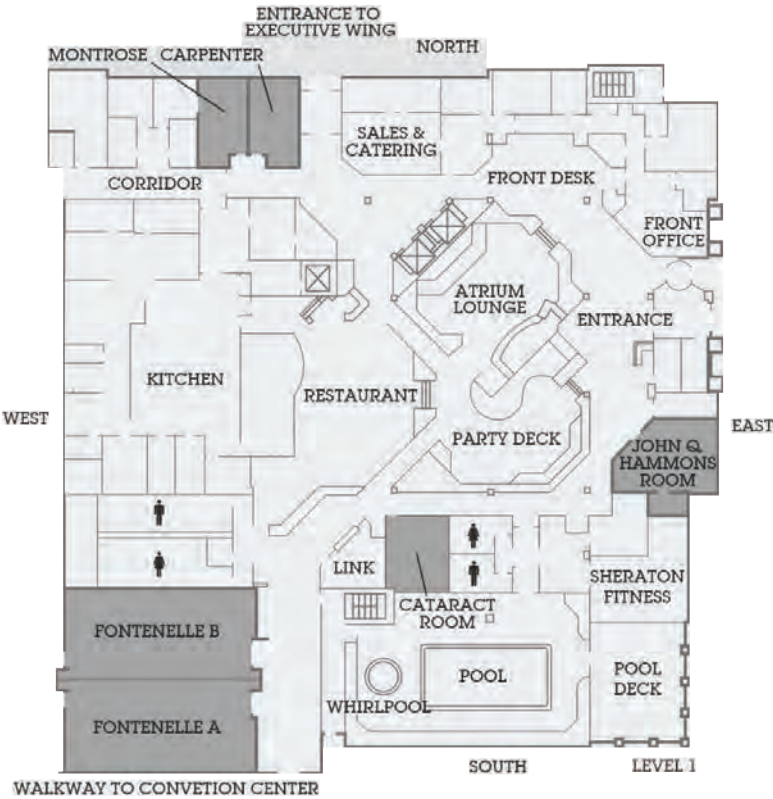
Additional amenities include complimentary airport shuttle service, fitness center, business center, indoor pool, pet friendly, and more.

**1211 N. WEST AVE.**  
**SIOUX FALLS, SD 57104**  
**PH: 605.331.0100**  
**SHERATONSIOUXFALLS.COM**

PROPERTY: **SHERATON SIOUX FALLS**

Meeting Room Name	Dimensions	Sq. Ft.	BANQUET 72"	THEATER	CLASSROOM	U-SHAPE	RECEPTION
Fontenelle A	25' x 52'	1,300	60	120	55	30	100
Fontenelle B	25' x 52'	1,300	60	120	55	30	100
Fontenelle	50' x 52'	2,600	120	264	130	40	200
Cataract	17' x 21'	357	10	30	15	14	12
John Q. Hammons	18' x 28'	504	24	40	15	12	40
Party Deck	38' x 30'	1,140	40	N/A	N/A	N/A	50

Meeting Room Name	Dimensions	Sq. Ft.	CONFERENCE
Carpenter	14' x 21'	294	12
Montrose	14' x 21'	294	12







The Ramada Hotel and Suites is located conveniently across from the Denny Sanford PREMIER Center, Convention Center, and Arena. The hotel features 150 rooms including 50 spacious two-room suites. Business suites and family suites offer a living room, microwave, and refrigerator.

Nearly 5,000 square feet of function space includes a galley ballroom with 12' ceilings with no pillars or windows. Conference space is flexible — accommodating theatre, classroom, boardroom, and banquet style seating.

Additional amenities include on-site Boss' Pizzeria and Tap House restaurant, Buccaneer Bay Waterpark and Tiki Bar, complimentary airport shuttle service, business center, fitness center, and more.



**1301 W. RUSSELL ST.  
SIOUX FALLS, SD 57104  
PH: 605.336.1020  
SIOUXFALLSRAMADA.COM**

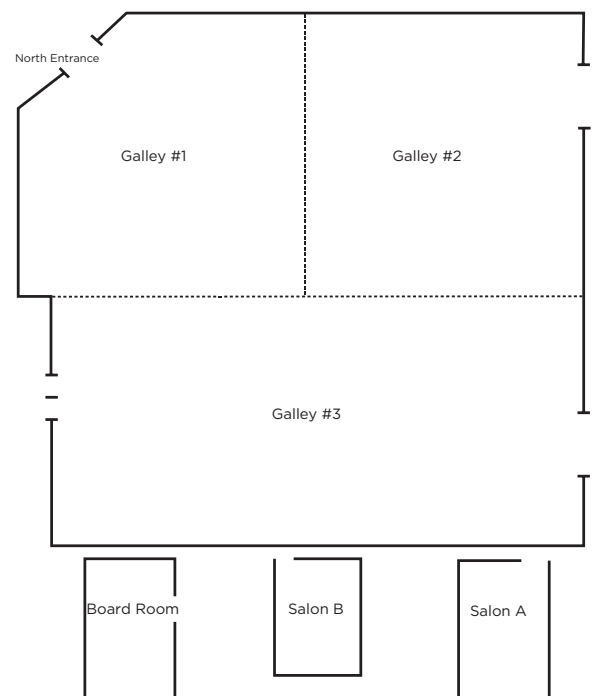


PROPERTY: **RAMADA BY WYNDHAM SIOUX FALLS  
AIRPORT - WATER PARK & EVENT CENTER**



Meeting Room Name	Dimensions	Sq. Ft.	BANQUET 72"	THEATER	CLASSROOM	U-SHAPE	RECEPTION
Galley #1	35.5' x 33'	1,105	50	110	50	45	120
Galley #2	25' x 33'	825	50	110	50	45	90
Galley #3	33' x 51'	1,683	100	225	100	N/A	180
Galley #1-3	N/A	3,613	250	400	250	N/A	400
Salon A	21' x 15'	313	30	30	16	20	40
Salon B	29' x 13'	377	30	30	16	20	30

Meeting Room Name	Dimensions	Sq. Ft.	CONFERENCE
Board Room	28' x 13'	364	12





## HILTON GARDEN INN SIOUX FALLS SOUTH



The Hilton Garden Inn Sioux Falls South features 103 sleeping rooms situated in a growing business district at the major intersection of I-229 and Louise Avenue. The area offers well-known local restaurants, shopping, and activities.

Guests have the option to dine at the Garden Grille Restaurant for breakfast and dinner or purchase a mix of local and name brand snacks from The Shop situated right off the front desk.

The property also offers over 4,000 square feet of flexible meeting and pre-function space. All meeting space comes equipped with on-site professional catering, audio visual, sound, and decorating services.

Additional amenities include complimentary airport shuttle service, fitness center, business center, security services, indoor pool, and more.



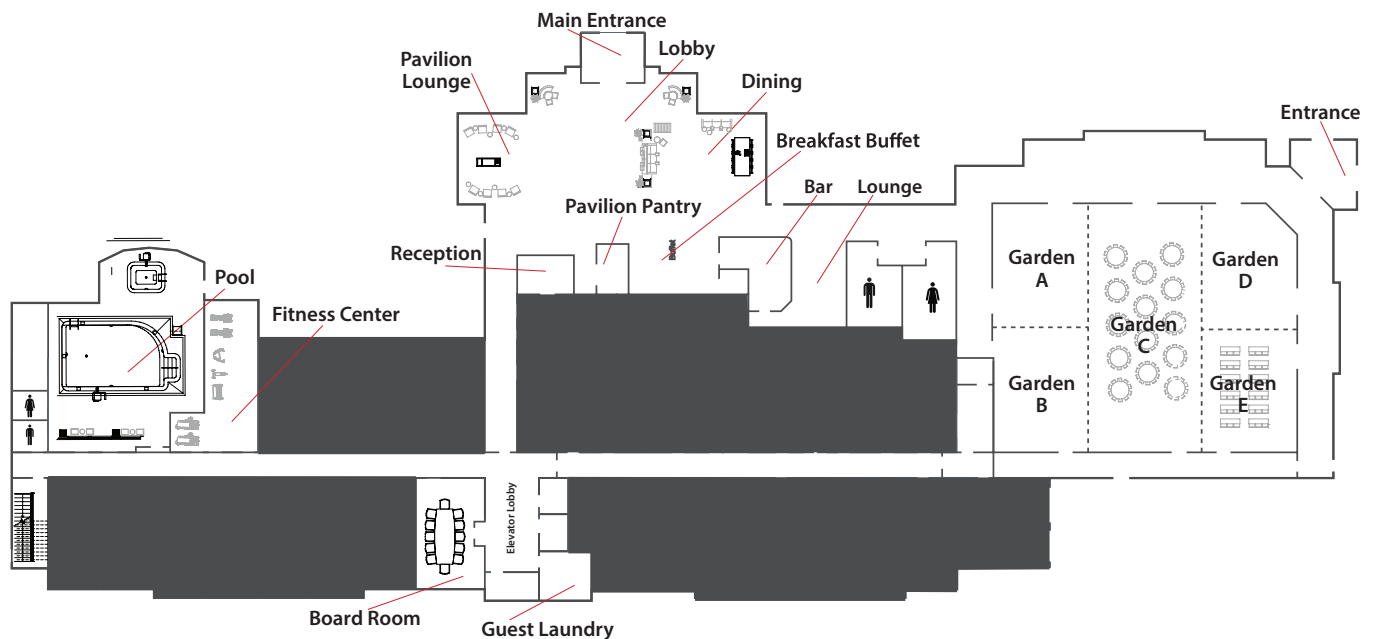
 **Hilton  
Garden Inn®**  
Sioux Falls South

**5300 S. GRAND CIR.  
SIOUX FALLS, SD 57108  
PH: 605.444.4500  
SIOUXFALLS.HGI.COM**

PROPERTY: **HILTON GARDEN INN SIOUX FALLS SOUTH**

Meeting Room Name	Dimensions	Sq. Ft.	BANQUET 72"	THEATER	CLASSROOM	U-SHAPE	RECEPTION
Garden Ballroom A-E	51' x 72'	3,696	250	360	200	N/A	360
Garden A	26' x 22'	560	30	50	25	22	60
Garden B	26' x 22'	560	30	50	25	22	60
Garden A-B	51' x 22'	1,120	80	110	50	46	120
Garden C	51' x 28'	1,456	90	130	90	50	150
Garden A-B-C	51' x 50'	2,576	160	230	144	56	255
Garden D	26' x 22'	560	30	50	25	22	60
Garden E	26' x 22'	560	30	50	25	22	60
Garden D-E	51' x 22'	1,120	80	110	50	46	120
Garden C-D-E	51' x 50'	2,576	160	230	144	56	255

Meeting Room Name	Dimensions	Sq. Ft.	CONFERENCE
Executive Boardroom	N/A	394	12





## HOLIDAY INN & SUITES SIOUX FALLS AIRPORT



The Holiday Inn & Suites Airport in Sioux Falls sits in the heart of the sports and entertainment district conveniently located off Interstate 29. The hotel features 116 guest rooms and over 3,100 square feet of meeting space. Notable locations nearby include the Denny Sanford PREMIER Center Complex, Elmwood Golf Course, and Sanford Sports Complex.



The on-site Crooked Pint Ale House is an upscale pub with the feel of a local neighborhood restaurant. There is something for everyone, a full menu and generous selection of beer, local and regional craft brews, wines, and spirits. With twenty-three HDTVs, there is optimal viewing for sports aficionados in an authentic and hospitable classic pub atmosphere.

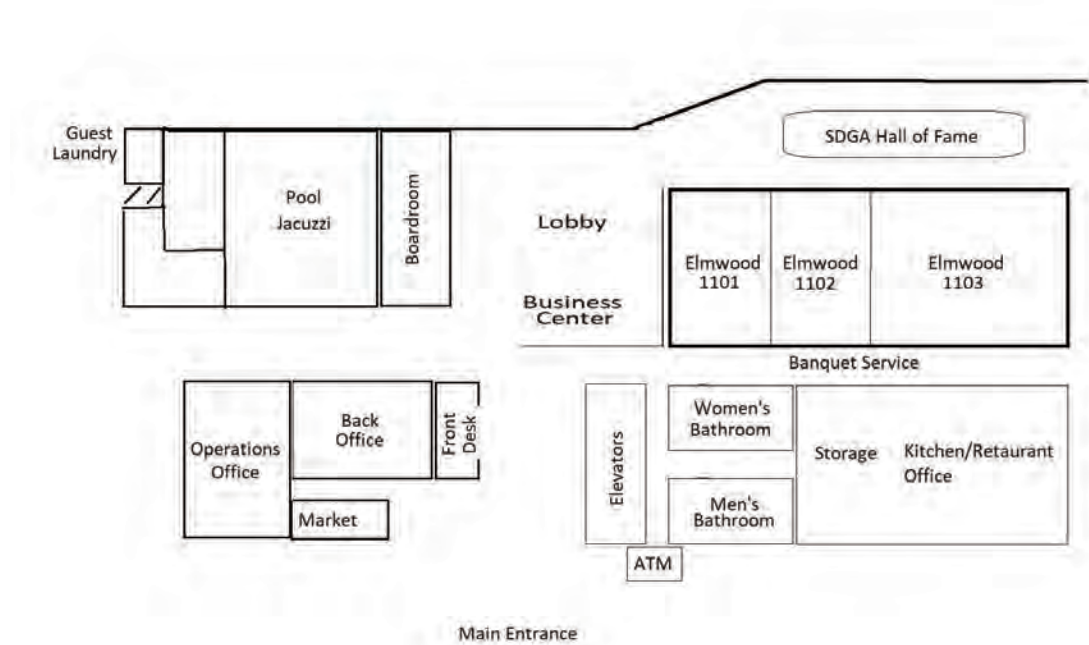
As home to the South Dakota Golf Association and Hall of Fame, the hotel is proud to feature a celebration of the golfing history in the state.

Additional amenities include complimentary airport shuttle service, business center, fitness center, pet friendly, indoor pool, and more.



2040 W. RUSSELL ST.  
SIOUX FALLS, SD 57104  
PH: 605.331.2040  
[HOLIDAYINN.COM/SIOUXFALLSSD](http://HOLIDAYINN.COM/SIOUXFALLSSD)

PROPERTY: **HOLIDAY INN & SUITES SIOUX FALLS AIRPORT**



Meeting Room Name	Dimensions	Sq. Ft.	BANQUET 72"	THEATER	CLASSROOM	U-SHAPE	RECEPTION
Elmwood Ballroom	95' x 32'	3,040	190	200	150	80	190
Elmwood 1101 and 1102	32' x 27'	864	40	50	24	24	60
Elmwood 1103	32' x 43'	1,376	80	100	48	51	120
Elmwood 1102 and 1103	32' x 68'	2,076	120	150	72	75	180

Meeting Room Name	Dimensions	Sq. Ft.	CONFERENCE
Boardroom	24' x 10'	320	12







Welcome to your home away from home. Surround yourself in the superior service and elegantly relaxing ambiance at the perfect Sioux Falls location. The Midwestern charm and unprecedented attention to detail will provide the perfect weekend getaway with the family, romantic night out, or inspirational business meeting.

Features include 100 guest rooms from standard rooms to luxury suites, scenic walk outs and multi-level suites for special events. The hotel offers just over 3,000 square feet of meeting space, be it a business meeting, corporate training, family celebration, or wedding.

Additional amenities include on-site Johnny Carino's Italian Restaurant, indoor water playland, complimentary deluxe breakfast, fitness center, business center, complimentary airport and area limo service, and more.



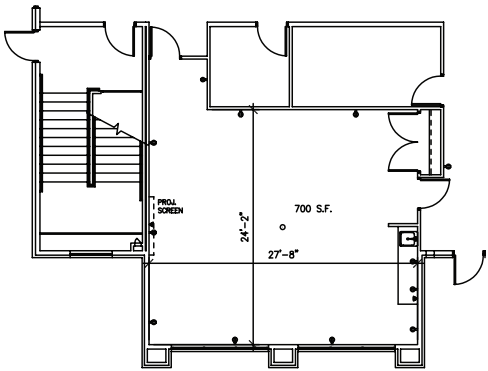
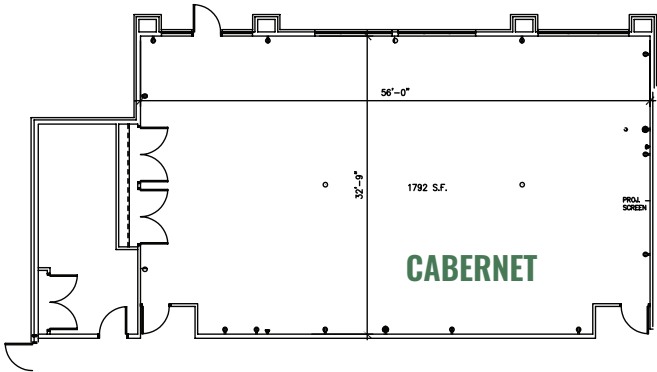
**2320 S. LOUISE AVE.**  
**SIOUX FALLS, SD 57106**  
**PH: 605.361.8700**  
**SIOUXFALLS.CLUBHOUSEINN.COM**



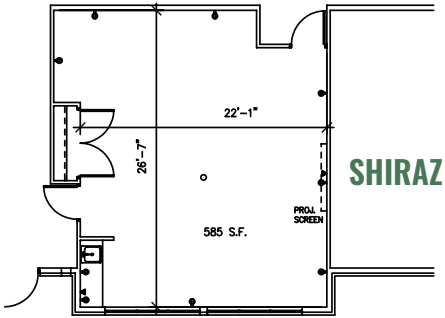
PROPERTY: CLUBHOUSE HOTEL & SUITES

Meeting Room Name	Dimensions	Sq. Ft.	ROUNDS	CLASSROOM	U-SHAPE	RECEPTION
Merlot	24' x 28'	700	40	24	21	40
Shiraz	27' x 22'	585	32	18	18	32
Cabernet	33' x 56'	1,792	128	84	48	128

Meeting Room Name	Dimensions	Sq. Ft.	CONFERENCE
Executive Boardroom	N/A	550	10



MERLOT



SHIRAZ







## COURTYARD BY MARRIOTT



The Courtyard Sioux Falls offers a modern hotel option within walking distance of The Empire Mall and The District concert and event venue. Just a short drive away is the Denny Sanford PREMIER Center and downtown shops and entertainment.

Guests will enjoy spacious rooms and suites when it is time to settle down along with complimentary wi-fi and luxurious bedding. Start the day with Starbucks coffee and breakfast at the Courtyard Bistro.

There are four meeting and event spaces totaling 1,875 square feet with the largest capacity seating for 70 people. Catering options, business services, and rentable audio-visual are available on-site.

Additional amenities include complimentary airport and five-mile radius shuttle service, indoor pool, business center, and fitness center.



# COURTYARD<sup>®</sup>

BY MARRIOTT

**4300 W. EMPIRE PL.  
SIOUX FALLS, SD 57106  
PH: 605.444.4300  
MARRIOTT.COM/FSDCY**



## HOLIDAY INN EXPRESS & SUITES EMPIRE MALL



**2501 S. SHIRLEY AVE.  
SIOUX FALLS, SD 57106  
PH: 605.361.0122  
HIEXPRESS.COM/SIOUXFALLSSD**

Find comfort and impeccable service at the Holiday Inn Express and Suites in a convenient location off Interstate 29 and within one mile of The Empire Mall, attractions, and restaurants. The 117 guest rooms are equipped with microwaves, refrigerators, Keurig coffee makers, and more. A free, Express Start breakfast bar is also provided, which features both hearty and healthy favorites.

Meeting spaces offered include three different sized rooms. The meeting rooms range from 650 to 1,073 square feet and can accommodate up to 40 people classroom style. A built-in screen, podium, wi-fi, flipchart/whiteboard, coffee, and water are all provided. An LCD projector, table linens and skirting, catering, snacks, and beverages are also available for additional fees. Guests have the option to arrange outside catering if desired.

Additional amenities include complimentary airport and citywide shuttle service, indoor swimming pool, hot tub, fitness room, business center, and guest laundry.

## HOLIDAY INN EXPRESS & SUITES SOUTHWEST



A favorite for corporate guests, the Holiday Inn Express and Suites in Southwest Sioux Falls offers 92 rooms and 900 square feet of meeting space for seating up to 45 people. A state-of-the-art business center and expanded fitness facility are two premier amenities available to guests.

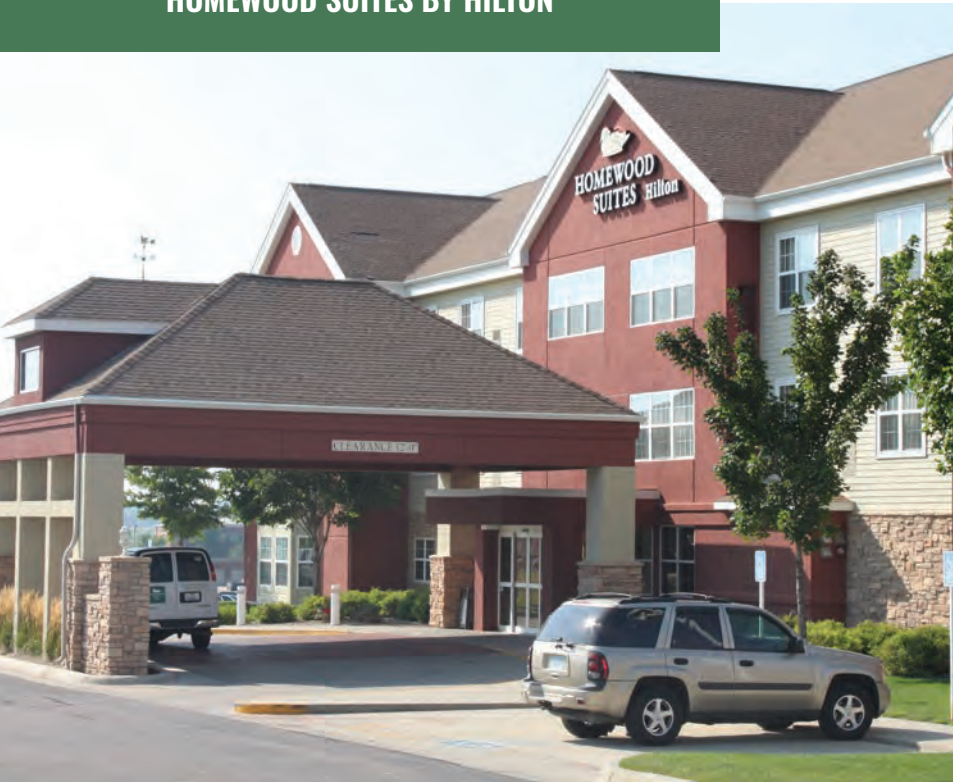
Just a short drive away are many attractions and businesses including The Empire Mall, Avera McKennan Hospital and University Health Center's south-side campus, and more.

Additional amenities include complimentary airport shuttle service, indoor pool, hot tub, and complimentary breakfast.

**3821 W. AVERA DR.  
SIOUX FALLS, SD 57108  
PH: 605.275.4155  
HIEXPRESS.COM/SIOUXFALLSSW**



## HOMWOOD SUITES BY HILTON



### HOMWOOD SUITES BY HILTON

Homewood Suites by Hilton Sioux Falls is an extended stay, all-suite hotel with 95 guest rooms. Every spacious suite features enough space for work, study or relaxing, plus all the comforts of home, including a fully equipped kitchen with a full-size refrigerator, stovetop, dishwasher, coffeemaker, and microwave oven.

Dine in the lodge for a complimentary full hot breakfast buffet daily and evening social with light fare and beverages Monday through Thursday. The courtyard gardens provide an outdoor gathering space and grill.

Flexible event space for up to 72 people is provided along with a professional support team to ensure a successful event. Meeting package includes complimentary internet access, morning or afternoon break, flip chart and notepads with pens as well as coffee, tea, and water service. Guests have the option to bring in outside audio visual equipment.

Enjoy easy access off Interstates 29 and 229 along with shopping, medical facilities, and a business park right nearby.

Additional amenities include complimentary airport and citywide shuttle service, indoor pool, whirlpool, fitness room, on-site convenience store, coin laundry, valet service laundry, and business center.



**3620 W. AVERA DR.  
SIOUX FALLS, SD 57108  
PH: 605.338.8585  
SIOUXFALLS.HOMWOODSUITES.COM**

## HOTEL ON PHILLIPS



## HOTEL ON PHILLIPS

Hotel on Phillips was originally built as the Sioux Falls National Bank in 1918 and it continued to operate primarily as a bank and office space for nearly 100 years. In 2019, it opened as South Dakota's first upscale boutique hotel featuring 90 unique and elegant guest rooms and luxury suites. Each room is equipped with Alexa Echo Dot providing voice control for the television and thermostat.

The elegant lobby still boasts the historical character and charm of the early 1900's with grand columns, original chandeliers, and ornate tray ceilings. A wall of old safe boxes provides the backdrop to the registration desk and behind the dark wood teller windows is a local favorite Coffea Roasterie and Espresso Bar. Centered in the lobby as its main focal point, stands the original bank vault which is now the entrance into The Treasury Lounge, which serves evening food and beverages consisting of small plates, wine, beer, and crafted cocktails.

Hattie's Parlour features 1,785 square feet of space for social events up to 60 people with a variety of seating options. The Bankers Boardroom is 270 square feet and comfortably accommodates 12 people with overstuffed leather executive boardroom chairs. Audio visual includes an adjustable large screen television.

Located in the heart of downtown Sioux Falls on Phillips Avenue, visitors are just steps away from boutiques, restaurants, art, and entertainment.

Additional amenities include complimentary airport and downtown shuttle service, fitness center, business center, and Market kiosk.



**100 N. PHILLIPS AVE.**  
**SIOUX FALLS, SD 57104**  
**PH: 605.274.7445**  
**HOTELONPHILLIPS.COM**



## HYATT PLACE



A modern 110-room hotel, Hyatt Place, is a comfortable respite from Lake Lorraine adventures just off Interstate 29. Spacious rooms feature plush amenities, separate sitting areas, mini refrigerators, and branded bath toiletries. Dining offerings include hot breakfast, 24-hour market, and The Bar open 24 hours a day. Additional amenities include fitness center, business center, pool, and is pet friendly. Customizable event space is available with 1,120 square feet of space.



**4935 W. LAKE SHORE BLVD.**  
**SIOUX FALLS, SD 57106**  
**PH: 605.271.2871**  
**HYATT.COM**

## LA QUINTA INN & SUITES



**4521 W. 41ST ST.**  
**SIOUX FALLS, SD 57106**  
**PH: 605.275.4555**  
**LAQUINTASIOUXFALLS.COM**

The La Quinta Inn & Suites Sioux Falls hotel is conveniently located off Interstate 29 in a major retail district including The Empire Mall and a plethora of restaurants. Just a short drive north on the Interstate is the sports and entertainment district.

The perfect home away from home from the welcoming entrance to the large over-sized rooms. A huge complimentary Bright Side Breakfast is available with a variety of hot items. The comfortable guest rooms offer a refrigerator and microwave in every room.

One meeting room with 990 square feet of space is available which seats up to 60 people. All audio-visual equipment is provided. Outside catering service is permitted.

Additional amenities include complimentary airport shuttle service, indoor pool, hot tub, fitness center, and laundry.



## AEROSTAY

The AeroStay Hotel offers overnight convenience for travelers making a quick trip through the Sioux Falls Regional Airport. There are 76 Eco-ficient® executive king and double queen rooms with fixed windows and blackout shades for sound and light reduction. Meeting space is available including a boardroom for 12 and separate space for up to 41 theater-style. Both rooms are equipped with state-of-the-art amenities needed for meetings and presentations.



**2821 N. JAYCEE LN.  
SIOUX FALLS, SD 57104  
PH: 605.335.1800  
AEROSTAY.COM**

## AMERICINN BY WYNDHAM

Located near The Empire Mall, the 64-room AmericInn Hotel and Suites provides a clean and comfortable environment for guests to make them feel at home. Start the day with complimentary breakfast, stay productive in the business center, and then unwind in the indoor pool and hot tub. One meeting room is available that can accommodate 15 guests.



**3508 S. GATEWAY BLVD.  
SIOUX FALLS, SD 57106  
PH: 605.215.0748  
AMERICINN.COM/SIOUXFALLS**



## BAYMONT BY WYNDHAM

The Baymont by Wyndham offers 77 rooms conveniently located off Interstate 29 and near The Empire Mall. Clean and comfortable guest rooms include a microwave and refrigerator. Additional amenities include complimentary breakfast, fitness room, and indoor pool. One meeting room is available that can accommodate 50 guests.



**3200 S. MEADOW AVE.  
SIOUX FALLS, SD 57106  
PH: 605.362.0835  
BAYMONTINNS.COM**



## BAYMONT BY WYNDHAM NORTH

Located within blocks of the Denny Sanford PREMIER Center complex, the Baymont by Wyndham North offers 43 affordable rooms next to amazing entertainment. Additional amenities include complimentary breakfast, indoor pool, fitness center, and is pet friendly. One meeting room is available that can accommodate 15 guests.



**3101 W. RUSSELL ST.  
SIOUX FALLS, SD 57107  
PH: 605.215.5811  
BAYMONTINNS.COM**



## GLō BEST WESTERN DAWLEY FARMS

The GLō Best Western Dawley Farms is a hip, boutique hotel delivering a well-trained lifestyle with bold options to work smarter, play harder, and live healthier on the road. The property features 79 rooms with a contemporary design throughout. Amenities include a heated pool, state-of-the-art fitness center, and market. Conveniently located in the premier Dawley Farm Shopping Village with easy access to Interstates 90 and 29, downtown Sioux Falls, and the Sioux Falls Regional Airport. Two meeting rooms are available with 653 square feet of space to accommodate up to 30 guests.



**1211 S. DARRYL PL.  
SIOUX FALLS, SD 57110  
PH: 605.275.4000  
BESTWESTERN.COM**

## COMFORT INN & SUITES AVERA SOUTHWEST

Experience the new comfort. Modern spacious rooms and suites that offer a relaxing home away from home at the 77-room Comfort Inn and Suites hotel. Conveniently located on the south side of the city off Interstates 29 and 229, provides quick trips to The Empire Mall, Avera Health, and Sanford medical facilities, while just a short 10-minute drive from the Sioux Falls Regional Airport, downtown Sioux Falls, Falls Park, and more. Amenities include free hearty breakfast, indoor heated pool, hot tub, fitness center, and more. One meeting room is available with 385 square feet of space to accommodate up to 32 guests.



**3721 W. AVERA DR.  
SIOUX FALLS, SD 57108  
PH: 605.593.0768  
CHOICEHOTELS.COM/SD099**





## COUNTRY INN & SUITES

The Country Inn and Suites provides guests with 71 rooms and a great location situated in the heart of downtown Sioux Falls, and just five minutes from the Sioux Falls Regional Airport. Enjoy views of the Big Sioux River Greenway and Recreation Trail and proximity to local restaurants, breweries, and shopping. The river-front patio of the on-site bar and grill, Falls Landing, is a local favorite. A short walk down the recreation trail leads you to the city's namesake, Falls Park. Guests will enjoy complimentary breakfast, fitness center, indoor pool, and hot tub. One meeting room is available with 680 square feet of space to accommodate up to 40 guests.



**200 E. 8TH ST.**

**SIOUX FALLS, SD 57103**

**PH: 605.373.0153**

**COUNTRYINNS.COM/SIOUXFALLSSD\_CENTRAL**

## THE DAKOTA

The Dakota is situated to the east of Interstate 29, making it easily accessible and just minutes from the Sioux Falls Regional Airport and downtown Sioux Falls. Guests feel at home in this 97-room property that features comfortable rooms and suite options with a full kitchen. Amenities include complimentary hot breakfast, fitness center, business center, restful patio with a waterfall, and pet friendly. Guests traveling with families will enjoy the indoor pool and 167-foot water slide. One meeting room is available that accommodates up to 35 people.



**3200 W. RUSSELL ST.**

**SIOUX FALLS, SD 57107**

**PH: 605.332.2000**

**STAYDAKOTA.COM**



## HAMPTON INN & SUITES SOUTHWEST

Guests will enjoy many modern furnishings and amenities at the 94-room Hampton Inn and Suites Southwest. This hotel sits right off Interstate 229 down the road from Avera Heart Hospital and five minutes from The Empire Mall. Additional amenities include indoor pool, fitness facility, complimentary breakfast, and airport shuttle service. One meeting room is available that accommodates up to 80 guests.



**3701 AVERA DR.**

**SIOUX FALLS, SD 57108**

**PH: 605.271.0992**

**HAMPTONINN.COM**



## HOME2 SUITES BY HILTON

Conveniently attached to Sanford Health USD Medical Center via a climate-controlled walkway, Home2 Suites by Hilton offers 80 smart and spacious studios and one-bedroom suites. Just minutes away is both Augustana University and the University of Sioux Falls, a ten-minute drive from the Sioux Falls Regional Airport, and central to shopping, dining, entertainment, and attractions. Additional amenities include Home2 MKT®, fitness facility, indoor pool, business center, Oasis lounge, free breakfast, and is pet friendly. One meeting room is available to accommodate up to 50 guests.



**1120 S. GRANGE AVE.**  
**SIOUX FALLS, SD 57105**  
**PH: 605.332.5461**  
**HOME2SUITES.COM**



## QUALITY INN & SUITES AIRPORT NORTH

The 93-room Quality Inn and Suites Airport North hotel offers business-friendly accommodations, satisfying professional service, and flexible meeting space. Conveniently located off Interstates 90 and 29, just minutes from the Sioux Falls Regional Airport, and a short drive from the Sanford Sports Complex, Denny Sanford PREMIER Center, and downtown Sioux Falls. Amenities include on-site bar and lounge, free hot breakfast, indoor pool, business center, and is pet friendly. One meeting room features 700 square feet of space to accommodate up to 74 guests.



**5410 N. GRANITE LN.**  
**SIOUX FALLS, SD 57107**  
**PH: 605.336.1900**  
**QUALITYINN.COM/HOTEL/SD062**

## SPRINGHILL SUITES BY MARRIOTT

SpringHill Suites provides a homelike retreat to balance work and play on the road in 84 stylish and modern suites. When it is time to explore, steps away is premier shopping and dining at The Empire Mall and just a quick drive from Augustana University, Wild Water West Waterpark, and the Denny Sanford PREMIER Center. Amenities include complimentary airport shuttle, indoor pool, free hot and fresh breakfast, fitness center, and outdoor patio. One meeting room is available with 672 square feet of space to accommodate up to 50 guests.



**4304 W. EMPIRE PL.**  
**SIOUX FALLS, SD 57106**  
**PH: 605.444.4200**  
**MARRIOTT.COM/FSDSH**



## STAYBRIDGE SUITES

The Staybridge Suites offers convenient access to many options of premier shopping and dining in The Empire Mall and Lake Lorraine shopping areas. The 90 suites include a full kitchen and supporting utensils. A quick drive to Interstate 29 takes you to the Denny Sanford PREMIER Center and downtown Sioux Falls in less than 15 minutes. Amenities include complimentary airport shuttle, free breakfast, fitness facility, indoor pool, hot tub, business center, social hour, and is pet friendly. One boardroom is available that seats up to 12 people.



**2505 S. CAROLYN AVE.**  
**SIOUX FALLS, SD 57106**  
**PH: 605.361.2298**  
**[STAYBRIGDESUITES.COM/SIOUXFALLSSD](http://STAYBRIGDESUITES.COM/SIOUXFALLSSD)**

## STAYBRIDGE SUITES SOUTHWEST

A home away from home, the Staybridge Suites Southwest, offers 102 spacious apartment style studios, one-bedroom, and two-bedroom suites with a full kitchen. Easy access off Louise Ave. provides visitors quick access to several shopping and dining areas. Just a short drive away is a plethora of entertainment and attractions including the city's namesake Falls Park, Denny Sanford PREMIER Center, and downtown Sioux Falls. Amenities include indoor pool, hot tub, fitness center, outdoor living space, business center, and social hour. One room is available that seats up to 12 people.



**4210 W. 59TH ST.**  
**SIOUX FALLS, SD 57108**  
**PH: 605.275.4900**  
**[IHG.COM/STAYBRIGDESUITES](http://IHG.COM/STAYBRIGDESUITES)**



	Hotel Info	# of Units	Fitness Center	Meeting Rooms	Pet Friendly	Airport Shuttle	Indoor Pool • Outdoor Pool ◇ Water Park ★	Dining/Lounge	Kitchen ◇ Microwave and Refrigerator ★ Refrigerator •	Guest Laundry	Free Continental Breakfast • Free Hot Breakfast ★	Wi-Fi
DOWNTOWN	<b>Country Inn &amp; Suites</b> 200 E. 8th St.   605.373.0153 countryinns.com/siouxfallssd_central	71	✓	✓			•	✓	★	✓	★	✓
	<b>Hilton Garden Inn Downtown</b> 201 E. 8th St.   605.444.4700 siouxfallsdowntown.hgi.com	136	✓	✓	✓	✓		✓	★	✓		✓
	<b>Holiday Inn City Centre</b> 100 W. 8th St. 605.339.2000   800.465.4329 sfcchotel.com	290	✓	✓	✓	✓	•	✓	★	✓		✓
	<b>Hotel On Phillips</b> 201 N. Phillips Ave.   605.274.7445 hotelonphillips.com	90	✓	✓		✓		✓	•			✓
EAST DISTRICT	<b>GLö Best Western at Dawley Farms</b> 1211 S. Darryl Pl. 605.275.4000   800.780.7234 bestwestern.com	79	✓	✓	✓		•	✓	•	✓	★	✓
	<b>Super 8</b> 2616 E. 10th St. 605.338.8881   800.800.8000 super8siouxfalls.com	56			✓		•		★	✓	★	✓
HOSPITAL & UNIVERSITY DISTRICT	<b>Center Inn (Avera McKennan Campus)</b> 900 E. 20th St.   605.334.9002 thecenterinn.com	58			✓				★	✓	•	✓
	<b>ClubHouse Hotel &amp; Suites</b> 2320 S. Louise Ave.   605.361.8700 siouxfalls.clubhouseinn.com	100	✓	✓	✓	✓	★	✓	★	✓	★	✓
	<b>Home2 Suites by Hilton Sioux Falls (Sanford Health Campus)</b> 1120 S. Grange Ave.   605.332.5461 home2suites.com	80	✓	✓	✓		•		◇	✓	★	✓
	<b>Ramada by Wyndham Sioux Falls</b> 407 S. Lyons Ave.   605.330.0000 wyndhamhotels.com/ramada	66	✓		✓		•		★	✓	★	✓
	<b>Valley Inn (Sanford Health Campus)</b> 1000 S. Grange Ave.   605.335.3040 valleyinnsiouxfalls.com	63							•	✓	•	✓
	<b>Woodspring Suites</b> 1109 S. Lyons Ave.   605.274.1001 woodspring.com	120							◇	✓		✓
MALL DISTRICT	<b>BEST WESTERN Empire Towers</b> 4100 W. Shirley Pl. 605.361.3118   888.338.3118 bestwestern.com/empiretowers	62			✓		•		★		★	✓
	<b>Candlewood Suites</b> 2725 S. Carolyn Ave.   605.361.3100 candlewoodsuites.com/siouxfalls	80	✓		✓				◇	✓		✓
	<b>Comfort Suites</b> 3208 S. Carolyn Ave.   605.362.9711 choicehotels.com	60	✓		✓		•		★	✓	★	✓

	Hotel Info	# of Units	Fitness Center	Meeting Rooms	Pet Friendly	Airport Shuttle	Indoor Pool • Outdoor Pool ◇ Water Park ★		Dining/Lounge	Kitchen ◇ Microwave and Refrigerator ★ Refrigerator •		Guest Laundry	Free Continental Breakfast • Free Hot Breakfast ★		Wi-Fi
MALL DISTRICT	<b>Courtyard by Marriott</b> 4300 W. Empire Pl.   605.444.4300 marriott.com/fsdcy	102	✓	✓		✓	•		✓	•		✓			✓
	<b>Fairfield Inn &amp; Suites by Marriott</b> 4501 W. Empire Pl. 605.361.2211   800.MARRIOTT marriott.com/fsdsf	60	✓				•			★		✓	★		✓
	<b>Hampton Inn</b> 2417 S. Carolyn Ave. 605.362.1700   800.HAMPTON hamptoninn.com	97	✓			✓	•			★		✓	★		✓
	<b>Holiday Inn Express &amp; Suites (Empire Mall)</b> 2501 S. Shirley Ave. 605.361.0122   800.465.4329 hiexpress.com/siouxfallssd	117	✓	✓			•			★		✓	★		✓
	<b>Microtel Inn &amp; Suites</b> 2901 S. Carolyn Ave.   605.361.7484 microtelinn.com/siouxfalls	64			✓					★		✓	•		✓
	<b>My Place Hotels</b> 3005 S. Carolyn Ave. 605.271.9988   855.200.5685 myplacehotels.com	64			✓					◇		✓			✓
	<b>Quality Inn &amp; Suites South</b> 3216 S. Carolyn Ave.   605.361.2822 choicehotels.com	65			✓		•			★			★		✓
	<b>Red Rock Inn</b> 4208 W. 41st St.   605.361.2345	77										✓			✓
	<b>Residence Inn by Marriott Sioux Falls</b> 4509 W. Empire Pl.   605.361.2202 marriott.com/fsdri	66	✓		✓		•			◇		✓	★		✓
	<b>Springhill Suites by Marriott</b> 4304 W. Empire Pl.   605.444.4200 marriott.com/fsdsh	84	✓	✓		✓	•			★		✓	★		✓
	<b>Staybridge Suites by The Empire Mall</b> 2505 S. Carolyn Ave.   605.361.2298 staybridgesuites.com/siouxfallssd	90	✓	✓	✓	✓	•			◇		✓	★		✓
	<b>Super 8 by Wyndham Sioux Falls/41st Street</b> 4100 W. 41st St.   605.361.9719 super8.com	91	✓							★		✓	★		✓
NORTH DISTRICT	<b>Cloud 9 Motel</b> 4904 N. Cliff Ave.   605.338.6090	53			✓					★		✓	•		✓
	<b>Days Inn Airport</b> 5001 N. Cliff Ave. 605.331.5959   800.DAYSINN daysinn.com/hotel/06835	85	✓		✓	✓				★		✓	★		✓
	<b>EconoLodge North Airport</b> 5100 N. Cliff Ave.   605.331.4490 econolodge.com/sd011	81	✓		✓		•			★		✓	★		✓
	<b>Happy Rest Motel</b> 3307 N. Cliff Ave.   605.332.0505	31								★		✓			✓



	Hotel Info	# of Units	Fitness Center	Meeting Rooms	Pet Friendly	Airport Shuttle	Indoor Pool •	Dining/Lounge	Kitchen ◇	Guest Laundry	Free Continental Breakfast •	Wi-Fi
							Outdoor Pool ◇		Microwave and Refrigerator ★		Free Hot Breakfast ★	
							Water Park ★		Refrigerator •			
SOUTH DISTRICT	<b>Comfort Inn &amp; Suites</b> 3721 W. Avera Dr.   605.275.9577 comfortinn.com/sd099	77	✓	✓			•		★	✓	★	✓
	<b>Hampton Inn &amp; Suites Southwest</b> 3701 W. Avera Dr. 605.271.0992   800.HAMPTON hamptoninn.com	93	✓	✓	✓	✓	•		★	✓	★	✓
	<b>Hilton Garden Inn Sioux Falls South</b> 5300 S. Grand Cir. 605.444.4500   877.STAYHGI siouxfalls.hgi.com	103	✓	✓	✓	✓	•	✓	★	✓		✓
	<b>Holiday Inn Express &amp; Suites Southwest</b> 3821 W. Avera Dr. 605.275.4155   800.465.4329 hiexpress.com/siouxfallssw	92	✓	✓			★		★	✓	★	✓
	<b>Homewood Suites by Hilton</b> 3620 W. Avera Dr. 605.338.8585   800.CALLHOME siouxfalls.homewoodsuites.com	95	✓	✓	✓		•		◇	✓	★	✓
	<b>Staybridge Suites Sioux Falls Southwest</b> 4210 W. 59th St.   605.275.4900 ihg.com/staybridge	102	✓	✓	✓		•		★	✓	★	✓
	<b>TownePlace Suites South by Marriott</b> 6400 S. Connie Ave. 605.274.2480   800.257.3000 towneplacesuitessiouxfalls.com	92	✓		✓		•		◇	✓	★	✓
SOUTHWEST DISTRICT	<b>Americinn by Wyndam Sioux Falls</b> 3508 S. Gateway Blvd. 605.361.3538   800.634.3444 americinn.com	64			✓		•		★	✓	★	✓
	<b>Baymont Inn &amp; Suites</b> 3200 S. Meadow Ave.   605.362.0835 baymontinns.com	77	✓	✓	✓		•		★	✓	★	✓
	<b>Days Inn Empire</b> 3401 Gateway Blvd. 605.361.9240   800.DAYSINN daysinn.com/hotel/06834	79	✓		✓				★	✓	•	✓
	<b>Hyatt Place Sioux Falls</b> 4935 W. Lake Shore Blvd.   605.271.2871 hyattplacesiouxfallssouth.com	110	✓	✓	✓		•	✓	•	✓	•	✓
	<b>LaQuinta Inns &amp; Suites</b> 4521 W. 41st St.   605.275.4555 lq.com	89	✓	✓	✓	✓	•		★	✓	★	✓
	<b>TownePlace Suites by Marriott</b> 4545 W. Homefield Dr. 605.361.2626   800.257.3000 towneplacesuites.com/fsdts	67	✓		✓	✓	•		◇	✓	★	✓
	<b>Westwick Motel &amp; RV Park</b> 5801 W. 12th St.   605.336.2390	24			✓				★	✓		✓

	Hotel Info	# of Units	Fitness Center	Meeting Rooms	Pet Friendly	Airport Shuttle	Indoor Pool •	Dining/Lounge	Kitchen ◇	Guest Laundry	Free Continental Breakfast •	Wi-Fi
							Outdoor Pool ◇		Microwave and Refrigerator ★		Free Hot Breakfast ★	
SPORTS & ENTERTAINMENT DISTRICT	<b>AeroStay Hotel</b> Sioux Falls Regional Airport 2821 N. Jaycee Ln.   605.335.1800 aerostay.com	76	✓	✓	✓				★		•	✓
	<b>Americinn by Wyndam Sioux Falls North</b> 3300 W. Russell St.   605.274.1180 americinn.com	78	✓				•		★	✓	★	✓
	<b>Baymont Inn &amp; Suites West Russell</b> 3101 W. Russell St.   605.338.6242 baymontinns.com	42	✓	✓	✓		•		★	✓	★	✓
	<b>BEST WESTERN PLUS Ramkota Hotel &amp; Conference Center</b> 3200 W. Maple St. (I-29 Exit 81) 605.336.0650 siouxfalls.bwramkota.com	223	✓	✓	✓	✓	★◇	✓	★	✓	•	✓
	<b>Comfort Inn &amp; Suites Sanford Sports Opening Summer Of 2023</b> 3900 N. Hercules Ave.	86	✓	✓			•	✓	★	✓	★	✓
	<b>Fairfield Inn &amp; Suites by Marriott Sioux Falls Airport</b> 4035 Bobhalla Dr. 605.339.8997   800.MARRIOTT marriott.com/fsdnw	82	✓			✓	•		★	✓	★	✓
	<b>Holiday Inn &amp; Suites Sioux Falls Airport</b> 2040 W. Russell St.   605.331.2040 holidayinn.com/siouxfallssd	116	✓	✓	✓	✓	•	✓	★	✓		✓
	<b>Quality Inn &amp; Suites Airport North</b> 5410 N. Granite Ln.   605.336.1900 qualityinn.com/hotel/sd062	93	✓	✓	✓	✓	•	✓	★	✓	★	✓
	<b>Ramada by Wyndham Sioux Falls Airport-Waterpark &amp; Event Center</b> 1301 W. Russell St. 605.336.1020   866.336.1020 siouxfallsramada.com	150	✓	✓		✓	★	✓	★	✓		✓
	<b>Sheraton Sioux Falls Hotel</b> 1211 N. West Ave. 605.331.0100   888.627.8088 sheratonsiouxfalls.com	243	✓	✓	✓	✓	•	✓	•	✓		✓
	<b>Sleep Inn</b> 1500 N. Kiwanis Ave.   605.339.3992 sleepinn.choicehotels.com	64	✓				•		★	✓	★	✓
	<b>The Dakota</b> 3200 W. Russell St.   605.332.2000 staydakota.com	98	✓	✓	✓		★		★	✓	•	✓



## ADDITIONAL EVENT SPACE

---

Sioux Falls offers a variety of unique event spaces whether it's for an opening reception, closing ceremony, or breakout session. There are charming outside locations at many of the premier parks throughout the city, which are especially attractive during the spring, summer, and fall months. Indoor venues and many attractions offer eclectic and historical backdrops in a variety of sizes.

The following are locations which receive funding from city and county government. Go to [ExperienceSiouxFalls.com/venues](https://ExperienceSiouxFalls.com/venues) for a more complete listing.



### WASHINGTON PAVILION & ORPHEUM THEATER

The Washington Pavilion and Orpheum Theater are managed by Washington Pavilion Management, Inc. Each venue offers unique spaces for meetings, events, and more. Professional services include décor, audio visual and technical equipment, security, ushers, meeting supplies, lighting packages, video conferencing, and exclusive catering from Leonardo's Café.



---

**301 S. MAIN ST.  
SIOUX FALLS, SD 57104  
PH: 605.367.6000  
[WASHINGTONPAVILION.ORG](https://WASHINGTONPAVILION.ORG)**

## ORPHEUM THEATER CENTER



For over 100 years, the Orpheum Theater Center has been a landmark in downtown Sioux Falls. The theater was built in 1913 as a vaudeville house and evolved into a venue for theatrical presentations. Over the course of time, three rental spaces were established through extensive restoration.

The three spaces are all connected by a large lobby and concessions area, and the building also boasts an outdoor patio.

Known for its superb acoustics, the theater receives tens of thousands of visitors each year with events such as plays, concerts, dance, community events, and private rentals. The Orpheum Theater was added to the National Register of Historic Places in 1983. Managed by Washington Pavilion Management, Inc.



### FEATURES:

- Orpheum Theater – 686 seats
- Anne Zable Studio Theater – up to 300 people
- Classroom space – up to 150 people



**O R P H E U M**  
**T H E A T E R C E N T E R**

**315 N. PHILLIPS AVE.**  
**SIOUX FALLS, SD 57104**  
**PH: 605.367.6000**  
**SIOUXFALLSORPHEUM.COM**

### PROPERTY: ORPHEUM THEATER

Meeting Room Name	Sq. Ft.	BANQUET 60"	THEATER	CLASSROOM	U-SHAPE	RECEPTION
Orpheum Theater	N/A	96	686	72	42	150
Anne Zabel Studio	3,150	200	250	200	60	300
Classroom	1,250	80	100	70	27	100



## WASHINGTON PAVILION

The Washington Pavilion was the city's first high school and is now the region's home for the arts, entertainment, and science. Located in a beautifully renovated historic building in downtown Sioux Falls, it is one of only a few facilities in the world to bring together under one roof the performing arts, visual arts, interactive science, and educational opportunities.

The 1,800-seat Mary W. Sommervold Hall and 150-seat Belbas Theater feature Broadway tours, concerts, and chamber recitals. The Kirby Science Discover Center offers 100 hands-on interactive science exhibits for all ages and an immersive theater experience features adventures and documentaries on a 60-foot domed screen. Regional and national exhibits range from South Dakota artists to notable national and international artists found in the Visual Arts Center.



**301 S. MAIN AVE.  
SIOUX FALLS, SD 57104  
PH: 605.367.6000  
WASHINGTONPAVILION.ORG**

The luxurious décor and historic architecture provide an excellent array of settings and multi-functional spaces for any event.

Leonardo's Café offers customizable, great-tasting, and affordable meals right on-site. The menu includes fresh-cooked meal options for individuals as well as for groups and business meetings.

The Washington Pavilion is also home to several partners including the South Dakota Symphony Orchestra, SculptureWalk, South Dakota Rock and Roll Hall of Fame, and the South Dakota African American History Museum.

### FEATURES:

- Husby Performing Arts Center
- Kirby Science Discovery Center
- Well Fargo CineDome
- Visual Arts Center
- Leonardo's Cafe





PROPERTY: **WASHINGTON PAVILION**

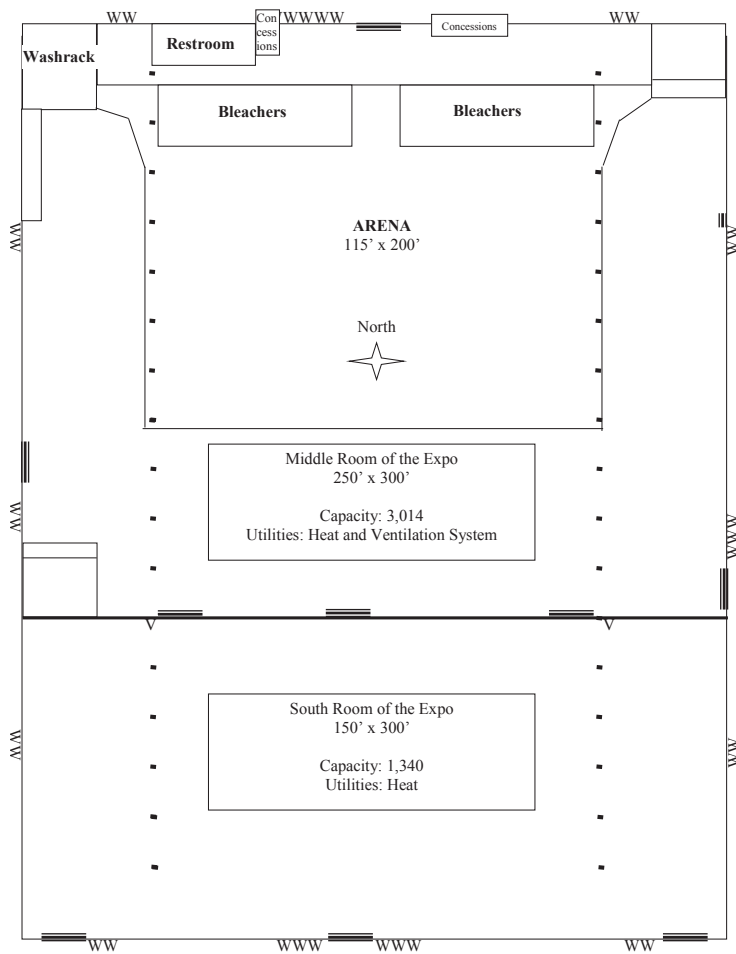
Meeting Room Name	Sq. Ft.	BANQUET 72"	THEATER	CLASSROOM	U-SHAPE	RECEPTION
Mary W. Sommervold Hall	N/A	N/A	1,400	N/A	N/A	N/A
Mary W. Sommervold Hall Stage	5,300	150	175	125	42	250
2nd Floor Lobby	6,000	100	N/A	N/A	See Event Sales Manager	175
3rd Floor Lobby	7,000	175	100	N/A		200
Belbas Theater	1,200	30	150	20	8	40
Lower Visual Arts Center Galleries	4,000	Capacities Change Dependent on Artwork In Space, Please See Event Sales Manager for Layout Information.				
Everist Gallery	4,800	Capacities Change Dependent on Artwork In Space, Please See Event Sales Manager for Layout Information.				
Schulte Room	2,200	120	170	85	48	150
Leonardo's Café	2,600	100	N/A	N/A	40	150
Kirby Science Discovery Center	7,000	N/A	N/A	N/A	N/A	700
Wells Fargo CindeDome	N/A	N/A	160	N/A	N/A	N/A
Sculpture Garden	4,200	100	225	N/A	N/A	300
Classroom 312	575	30	40	16	16	30
Classroom 313	625	30	40	24	24	35
Classroom 312 & 313	1,200	70	90	40	40	70

Meeting Room Name	Sq. Ft.	CONFERENCE
Executive Boardroom	400	24
Green Room	350	10

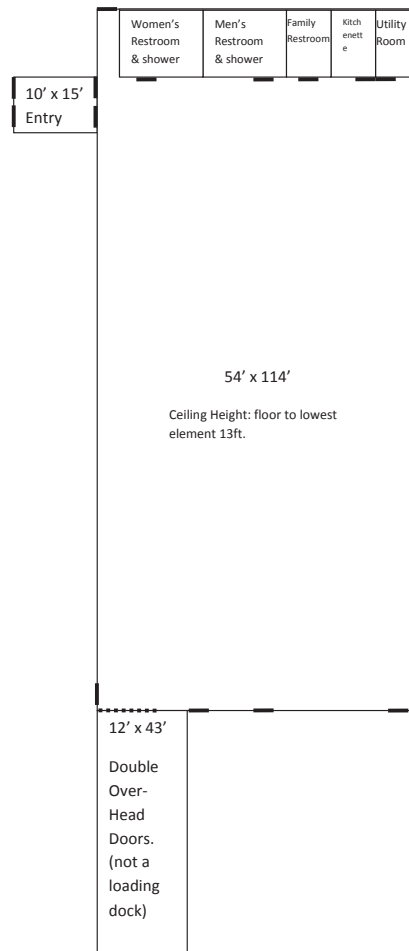


W.H. LYON  
FAIRGROUNDS  
& EXPO CENTER

experiencesiouxfalls.com | PLANNER GUIDE



## Nordstrom Johnson Multipurpose Building



Capacity:

480: Un-concentrated tables and chairs.

900: Cocktail Style.

Utilities: AC and Heat.

\*Restrooms: are all handicap accessible.





Hike, Swing, Swish,  
Splash, Kick, SCORE.

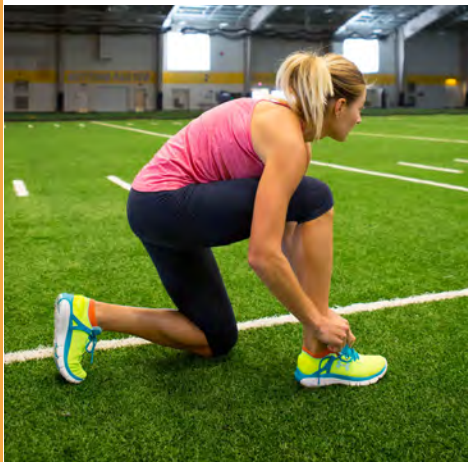
SPORTS VENUES





## **SPORTS ARE IN OUR DNA. AND THE VENUES ARE IN EVERY CORNER.**

We love our sports. Having hosted two rounds of March Madness, aquatic competitions, NCAA Division I hockey or any of our collegiate stadium games, we have the capacity for exceptional sporting events. The Sanford Sports Complex hosts several competitions and tournaments year-round with every amenity you could need, right there on site. A regionally known expansive parks system also hosts soccer, baseball and softball at all levels.



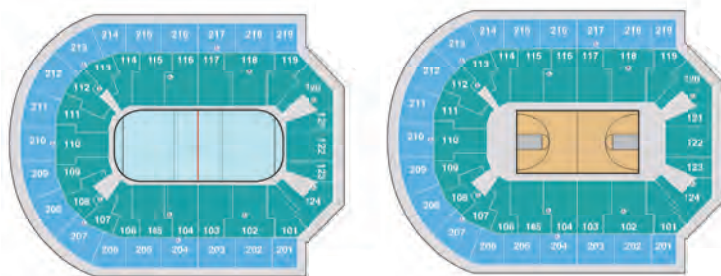




The Denny Sanford PREMIER Center is nationally known for hosting premier sporting events. The attached Sioux Falls Convention Center and Sioux Falls Arena also offer on-site warm-up areas, practice facilities, trade show space, and room for fan fest events.

The PREMIER Center is conveniently located off Interstate 29 which intersects with Interstate 90 a few minutes north providing easy accessibility for drive in teams, participants, and fans. It is also just a short five-minute drive from the Sioux Falls Regional Airport.

The 243-room Sheraton Sioux Falls Hotel is conveniently attached by a climate-controlled walkway. Over 1,000 hotel rooms can be found within a one-mile radius of the venue.



**MAIN CONCOURSE**  
**UPPER CONCOURSE**



## DENNY SANFORD PREMIER CENTER

Photo Credit: Steven Parezo



### FEATURES

- 12,000 seats
- 30,000 square feet on main floor
- NBA basketball court, seating 10,600
- NHL hockey rink, seating 10,600
- Integrated LED video display system
- Four levels: Event Level, Main Concourse, Premium Level, Upper Concourse
- 22 suites and 18 loges on the Premium Level
- Over 3,500 free parking spaces

### NOTABLE EVENTS

- NCAA Division I Summit League Men's & Women's Basketball Championships
- NCAA Division I Women's Basketball Regional
- NCAA Division II Wrestling Championship
- Professional Bull Riders Built Ford Tough Invitational



**DENNY SANFORD**  
**PREMIER CENTER**

**1201 N. WEST AVE.**

**SIOUX FALLS, SD 57104**

**PH: 605.367.7288**

**DENNYSANFORDPREMIERCENTER.COM**

**MANAGED BY ASM GLOBAL**

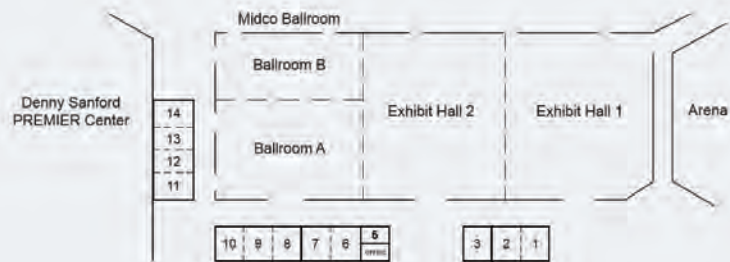
## CONVENTION CENTER AND ARENA

### CONVENTION CENTER FEATURES

- 13 professionally equipped meeting rooms
- 33,600 square foot exhibit hall with 25' ceilings
- 16,800 square foot ballroom with 25' ceilings
- Ballroom and exhibit hall connect to offer 50,400 square feet
- Four loading docks with direct access to exhibit hall
- Full utility services in exhibit floor

### SIOUX FALLS ARENA FEATURES

- 7,000 seats
- College basketball court
- 20,000 square feet on main floor
- 10,000 square feet of additional space in concourses



The Denny Sanford PREMIER Center Complex also includes venues for baseball, soccer, track and field, and football. Sioux Falls Stadium is home to the Sioux Falls Canaries, a member of the North Division of the American Association of Independent Professional Baseball.

### SIOUX FALLS STADIUM FEATURES

- Seats nearly 4,500 people
- Luxury box suites
- Grass berm down third base line
- Two ticket entrances
- Walkway area and two-level seating
- Concessions



### HOWARD WOOD FIELD FEATURES

- 10,000 seats
- Two football fields or one soccer
- 400-meter track
- Fieldhouse and locker rooms
- Lighting, sound, scoreboard
- Concessions
- Press box





This game-changing destination can host basketball, football, baseball, softball, hockey, lacrosse, tennis, volleyball, soccer, wrestling, and the list goes on. If it involves kicking, running, jumping, hitting, catching, skating, shooting, and scoring, athletes can do it at the Sanford Sports Complex. With nearly 500 acres dedicated to pursuing excellence in personal and team fitness, Sanford POWER training, competition, sports medicine, and athletic science research – the complex is changing the way sports and healthcare unite.

Additionally, visitors will enjoy retail, hospitality, and entertainment all on-site. The added convenience off Interstate 29 and proximity to the Sioux Falls Regional Airport make it an appealing destination for youth, amateur, and professional events.

### INCLUDES:

- Sanford Crossing
- Sanford Diamonds
- Sanford Pentagon
- Sanford Fieldhouse
- Scheels IcePlex
- Huether Family Match Pointe
- South Dakota Junior Football Park
- Power and Grace Gymnastics



## SANFORD SPORTS COMPLEX

# SANFORD SPORTS COMPLEX

2210 W. PENTAGON PL.  
SIOUX FALLS, SD 57107  
PH: 605.312.7900  
SANFORDSPORTS.COM



### FAIRFIELD INN & SUITES

The Fairfield Inn and Suites offers 82 rooms with a microwave and mini refrigerator. Additional amenities include free hot breakfast, complimentary airport shuttle, business center, laundry, fitness room, indoor pool, and more.

[Marriott.com/fsdnw](https://www.marriott.com/fsdnw)



### BLUE ROCK BAR & GRILL

Blue Rock Bar & Grill features unique flavors, detailed touches and fusion elements that give you all the decadence of fine dining with the casual atmosphere of everyday. Appetizers, sandwiches, burgers, steaks, and more.

[Bluerockbarandgrill.com](https://www.bluerockbarandgrill.com)



### NEW HOTELS

A new 86-room Comfort Inn & Suites is coming soon to the Sanford Sports Complex, summer 2023 and a 114-room extended stay hotel, Everhome Suites, will begin construction soon with an expected opening date of spring 2024.

[Choicehotels.com](https://www.choicehotels.com)

## EXPANSION

The new fields were part of a 1.7 million-square-foot turf project, one of the largest outdoor turf projects in the country. All fields include lighting for night games. The fields are available to rent for practices, games, tournaments, and leagues.

---

### SANFORD CROSSING

The Crossing includes eight brand-new synthetic turf multipurpose fields for soccer, lacrosse, football, and a variety of other sports. Whether it's a tournament, sports training program, or youth or adult league game, we can host it here.

**2405 W. BENSON RD.  
SIOUX FALLS, SD 57107  
PH: 605.312.7900  
SANFORDSPORTS.COM**



### SANFORD DIAMONDS

The Sanford Sports Complex now features five FieldTurf softball and five FieldTurf baseball fields. These fields are open to athletes, teams, and leagues interested in playing at a world-class facility right here in the Midwest.

**2405 W. BENSON RD.  
SIOUX FALLS, SD 57107  
PH: 605.312.7900  
SANFORDSPORTS.COM**







## SANFORD PENTAGON

The Pentagon is the cornerstone of the entire Sanford Sports Complex and home to state, regional, and national sporting events. The 160,000-square-foot, five-sided facility features nine basketball courts, including the 1950s/1960s-inspired Heritage Court. The venue combines state-of-the-art amenities including high-definition video boards and executive suites with period-specific finishes that are a nod to the nostalgic days of basketball.

## PENTAGON FEATURES

- Square Feet: 160,000
- Seating Capacity: 3,250 in Heritage Court
- Parking Capacity: 1,000 spots
- Executive Suites: 4, each holding 40
- Boxes: 14
  - 3-Point Lounge
  - Coca Cola Suite
- Concession Areas: 3
- Locker Rooms: 8
- Film Room: 1
- Meeting & Activity Rooms: 6
- Team Store: 1
- Athletic Training Rooms: 3

## TENANTS:

- Sanford POWER Basketball Academy
- Sanford POWER Volleyball Academy
- NBA G League Sioux Falls Skyforce
- SD High School Basketball Hall of Fame
- Augustana Men's & Women's Basketball

## NOTABLE EVENTS:

- AAU Grand Prix Volleyball Tournament
- NAIA DII Men's Basketball Championship
- NCAA DI Men's & Women's Basketball
- NCAA DII Volleyball Championship
- NSIC Conference Basketball Tournament
- NSIC Conference Volleyball Tournament



**2210 W. PENTAGON PL.**  
**SIoux FALLS, SD 57107**  
**PH: 605.312.7900**  
**SANFORDPENTAGON.COM**



## SANFORD FIELDHOUSE

The Sanford Fieldhouse is an 85,000-square-foot premier indoor sports training facility for soccer, baseball, softball, football, and Sanford POWER fitness programs. Athletes enjoy 62,000 square feet of professional grade Field Turf®, state-of-the-art training facilities, and two full-amenity locker rooms. The Fieldhouse is home to the Sanford POWER athletic enhancement program, Sanford POWER Baseball and Football Academies, the Sanford Sports Science Institute plus sports physical therapy and sports medicine providers. There's also a Sanford Health acute care clinic nearby for more urgent needs.

**2215 W. PENTAGON PL.**  
**SIoux FALLS, SD 57107**  
**PH: 605.312.7800**  
**SANFORDFIELDHOUSE.COM**



## SCHEELS ICEPLEX

The SCHEELS IcePlex offers three sheets of ice on 11 acres of land at the Sanford Sports Complex. Managed by the Sioux Falls Ice Sports Association, it has become a premier location for ice-based recreational activities in the upper Midwest region. It is home to Legend Hockey, Rhino Hockey, Sioux Falls Flyers Hockey, Sioux Falls Power Hockey, Sioux Falls Figure Skating Club, and a practice venue for the USHL Sioux Falls Stampede Hockey.

- Square Feet: 90,000
- Rinks: 3 full-sized, NHL regulation
- Seating Capacity: main inside 1,300, 300-400 outside
- Locker Rooms: 12
- Official's Room: 1
- Viewing Areas: large heated lobby
- Concessions: 1 full-service
- Meeting Room: 1, with 300 sq. ft.

**4300 N. BOBHALLA DR.**  
**SIoux FALLS, SD 57107**  
**PH: 605.271.7539**  
**SCHEELSICEPLEX.COM**





## GREAT SHOTS

Great Shots is not just a place for next-level entertainment, it's also the home to serious golf training. The Sanford POWER Golf Academy – located on the first floor – is the most comprehensive golf program in the region, combining golf skills training with sports science, physical therapy, and strength and conditioning and nutrition. Its team of PGA-certified coaches and movement experts helps golfers move better, feel better and play better.

The academy space includes four climate-controlled bays and a putting area, shot-tracking technologies and movement analysis technology plus strength-training equipment.

**2505 W. BENSON RD.  
SIOUX FALLS, SD 57107  
PH: 605.312.7960  
SANFORDPOWER.COM/GOLFACTHEDY**

## HUETHER FAMILY MATCH POINTE

Match Pointe provides year-round, high-quality tennis and pickleball opportunities on six state-of-the-art, championship indoor tennis courts located at the Sanford Sports Complex. The tennis center sits on six acres of land and offers professional, private, and group instruction for both adults and junior players and hosts to state, regional, and national tournaments. The facility is expanding to add four tennis courts to their existing facility for a total of 10 courts with an expected completion date of October 2023.

- Courts: 6 championship tennis
- Lighting: LED indirect
- Access: elevator to and from the mezzanine level
- Locker Rooms: 2 (M/F)
- Viewing: mezzanine for spectators and fans
- Meeting Rooms: classroom and childcare
- Opening Summer 2023: 4 additional indoor courts



**4210 N. BOBHALLA DR.  
SIOUX FALLS, SD 57107  
PH: 605.338.4036  
PLAYTHEPOINTE.COM**



## POWER & GRACE GYMNASTICS

Power & Grace is a state-of-the-art gymnastics training facility specializing in child development for ages 2-18 through strength, coordination, and balance. There are in-ground trampolines and loose-foam training pits. A 1,300-square-foot preschool play area is available and includes a traverse climbing wall. A variety of classes are offered for individuals as well as team trainings, competitions, and special events.

- Square Feet: 16,000
- Floors: 2 full competitive

**4225 N. BOBHALLA DR.  
SIOUX FALLS, SD 57107  
PH: 605.361.3419  
POWERANDGRACE.COM**

## SOUTH DAKOTA JUNIOR FOOTBALL PARK

The South Dakota Junior Football Park complex features nine full-sized football fields on 60 acres of land at the Sanford Sports Complex. It provides young football players a first-class facility to hone their skills and prepare for the next level. It is primarily used for youth games made up of 2nd through 8th graders in rookie, peewee, junior, and senior divisions. The fields can also be used for soccer.

- Lighted Fields: 9

**4000 N. BOBHALLA DR.  
SIOUX FALLS, SD 57107  
SDJRFB.COM**









# UNIVERSITY SPORTS

Sioux Falls is home to two NCAA DII private educational institutions, Augustana University and the University of Sioux Falls. In the last decade, both universities have invested millions of dollars in their athletic venues, student, and fan experiences. Just 45 minutes north and south of Sioux Falls are two NCAA DI schools, South Dakota State University and the University of South Dakota. The city has become well-known as a college sports championship destination.



**2505 S. GRANGE AVE.  
SIOUX FALLS, SD 57105  
PH: 605.274.4637  
GOAUGIE.COM**

## AUGUSTANA UNIVERSITY

Founded in 1860, Augustana offers undergraduate, graduate degree, and continuing education programs. Augustana serves more than 1,900 students from 41 states and 24 countries. Athletic facilities on the 100-acre-campus can host a wide variety of sports events.

In 2019-20 the Sanford Pentagon became host to the men's and women's basketball teams.

Augustana University is adding a Division I hockey team, and with that will come Midco Arena, a 3,000-seat venue on Augustana's campus which will be home to the Vikings hockey team in January 2024.



## ELMEN CENTER

Home to Viking volleyball and wrestling and host of several regional volleyball tournaments, as well as the 2000 Division II Volleyball Elite 8 Championships. Between 2007 and 2019, a new center-hung scoreboard and lighting was installed, the playing court was re-painted, and the fan experience was enhanced through bleacher and courtside-seat refurbishing.

- Square Feet: 81,000
- Seating Capacity: 4,000
- Primary Use: basketball, volleyball, and swimming
- Courts: up to 4 high school/collegiate
- Swimming Pool: 25 yards
- Racquetball: 2 courts
- Weight Room: 1
- Wrestling/multi-purpose room: 1
- Locker Rooms: 6
- Athletic Training: 1
- Hall Sports Forum: 27,000 sq. ft. performance area and 176-yard running track

## KIRKEBY-OVER FOOTBALL STADIUM

The anchor of Augustana's on-campus athletic facilities, Kirkeby-Over Stadium serves as the home of Vikings football and gives the program one of the premier football venues in all of NCAA Division II. The venue can host up to 6,500 people and includes 2,200 chairback seats. Fans can also watch from grass berms in the end zones. Luxurious suites, a spacious press box and private media booths border the west sideline of the stadium. The facility also boasts high definition television monitors in each suite and plenty of connection options for use by media.

## ADDITIONAL AUGUSTANA VENUES

- Bill Hall Baseball & Softball Complex
- Bowden Softball Field
- Huether Tennis Centre
- Kirby Indoor Golf Center
- Larson Track and Field
- Morstad Soccer Field
- Karras Park Home of Ronken Baseball Field





## UNIVERSITY OF SIOUX FALLS

Located just a few blocks north of Augustana University sits the University of Sioux Falls, a Christian, liberal arts university with over 1,600 students. Athletic facilities at the University of Sioux Falls are found on both their main campus and on their south campus, which includes the USF Sports Complex.



**1120 W. 26TH ST.  
SIOUX FALLS, SD 57105  
PH: 605.331.6791  
USFCOUGARS.COM**

### STEWART CENTER

- The Stewart Center is home to the USF Cougars volleyball and basketball teams.
- Seating capacity: 2,000
- Bleacher seating and chairback seating
- One main court and two additional multi-purpose courts
- Four scoreboards
- Sound system
- 120-meter track

### USF SPORTS COMPLEX

- Located at 69th Street and Cliff Avenue is the USF Sports Complex, where football, soccer, and track and field competitions are held.
- Bob Young Field
- 5,000-seat football stadium
- AstroTurf field
- USF Soccer Field
- Synthetic turf field
- Bleacher seating for 300
- Lillibridge Track
- Nine lane track
- Designated areas for field competition



## PARKS AND RECREATION



### MIDCO® AQUATIC CENTER

The Midco® Aquatic Center is an indoor pool complex that was built for both competitive and recreational swim.

- 50-meter, Olympic size pool
- Two 1-meter diving boards
- Two 3-meter diving boards
- Two bulkheads
- Can be configured with ten 50-meter lanes or 20 25-yard lanes
- Recreation pool
- Warm water pool
- Mezzanine level with seating for 500
- Lobby with concessions and table seating
- Splash pad and outdoor sun deck



1601 S. WESTERN AVE.  
SIOUX FALLS, SD 57105  
PH: 605.367.7665  
[MIDCOAQUATICCENTER.ORG](http://MIDCOAQUATICCENTER.ORG)



### HARMODON PARK

Harmodon Park, located on the eastern edge of Sioux Falls, has been a go-to park for numerous high school baseball tournaments.

- Seven lighted baseball fields
  - Four fields 410' home to center
  - Three fields 370' home to center
- Eight lighted softball fields
  - Eight fields 300' home to center
- Five batting cages
- Concession stand and restroom facility
- Ample amount of parking is available

5721 E. 41ST ST.  
SIOUX FALLS, SD 57110  
PH: 605.367.8222  
[SIOUXFALLS.ORG/PARKS](http://SIOUXFALLS.ORG/PARKS)

## KUEHN PARK

Kuehn Park, located on the west side of Sioux Falls, is a go-to spot for family recreation. In addition to tennis courts, the park also includes a golf course, two youth softball fields, and a swimming pool.

- Eight tennis courts
- Bleacher seating
- Ample amount of parking is available

**2901 S. KUEHN PARK RD.**  
**SIOUX FALLS, SD 57106**  
**PH: 605.367.8222**  
**[SIOUXFALLS.ORG/PARKS](http://SIOUXFALLS.ORG/PARKS)**



## MCKENNAN PARK

Hold your event in Sioux Falls' oldest park in the heart of the McKennan Historic District. McKennan Park has been home to many high school tennis meets and tournaments over the years.

- Eight lighted courts
- Concession and restroom facilities
- Bleacher seating
- Limited parking in a lot, but plenty of on-street parking available

**1400 S. 3RD AVE.**  
**SIOUX FALLS, SD 57103**  
**PH: 605.367.8222**  
**[SIOUXFALLS.ORG/PARKS](http://SIOUXFALLS.ORG/PARKS)**





## PASLEY PARK

Pasley Park sits along the scenic Big Sioux River Recreation Trail and Greenway and is well equipped to hold any youth baseball tournament.

- Seven agri-lime baseball fields for youth play
- Three batting cages
- Concession stand and restroom facility
- Ample amount of parking is available

**2521 SOUTHEASTERN AVE.**  
**SIOUX FALLS, SD 57103**  
**PH: 605.367.8222**  
**[SIOUXFALLS.ORG/PARKS](http://SIOUXFALLS.ORG/PARKS)**

## SHERMAN PARK

Sherman Park has been a premier softball complex for years as it has hosted numerous state and national tournaments. The park sits next to the Great Plains Zoo, making it a great stop for families before or after games. Sherman Park is also home to the South Dakota Softball Hall of Fame.

- Nine agri-lime lighted softball fields
  - Four fields 240' home to center
  - Five fields 275' home to center
- Fields for youth, collegiate, and adult play
- Bleacher seating for 225 people on each field; 340 on the Championship field
- Three restroom facilities
- Over 500 parking spaces available

**2705 W. 12TH ST.**  
**SIOUX FALLS, SD 57104**  
**PH: 605.367.8222**  
**[SIOUXFALLS.ORG/PARKS](http://SIOUXFALLS.ORG/PARKS)**





## SPENCER PARK

Spencer Park's 9-hole disc golf course plays through trees and prairie grass areas near the Big Sioux River and Greenway Trail. Disc golfers will love the secluded feel of this course.

**3501 S. CLIFF AVE.**  
**SIOUX FALLS, SD 57105**  
**PH: 605.367.8222**  
**SIOUXFALLS.ORG/PARKS**

## TOMAR PARK

Nestled next to the Big Sioux River, Tomar Park is a great disc golf course, youth soccer complex and tennis complex surrounded by nature. The GreatLIFE Care Foundation Tennis Complex is a new 12-court outdoor tennis complex that opened in September 2022. The project included renovating three existing courts and adding nine new courts, lighting, fencing, shade structures and bleachers.

- 12-court tennis complex
- 9-hole disc golf course
- Eight youth fields
- One adult field
- Restroom facility
- Parking available

**100 W. TWIN OAKS RD.**  
**SIOUX FALLS, SD 57105**  
**PH: 605.367.8222**  
**SIOUXFALLS.ORG/PARKS**



Photo Credit: Confluence







## TUTHILL PARK

One of the area's finest disc golf courses offers a challenging 18-hole layout amid scenic beauty. Wide open spaces, through the woods, and everything in between. This disc golf course has it all.

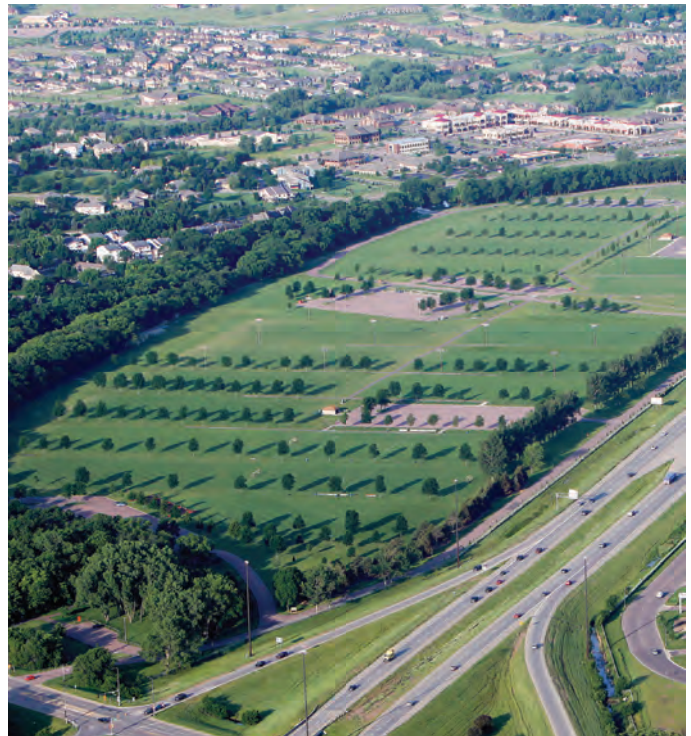
**3500 S. CLIFF AVE.**  
**SIOUX FALLS, SD 57103**  
**PH: 605.367.8222**  
**[SIOUXFALLS.ORG/PARKS](http://SIOUXFALLS.ORG/PARKS)**

## YANKTON TRAIL PARK

Yankton Trail Park is a soccer tournament organizer's dream with plenty of fields to support all levels of play for those large-scale tournaments. Past tournaments at Yankton Trail Park include U.S. Youth Regionals and South Dakota State High School Tournaments.

- 6 lighted, 21 total soccer fields
- Two restroom facilities
- Nearly 1,500 parking spaces are available

**3901 S. MINNESOTA AVE.**  
**SIOUX FALLS, SD 57108**  
**PH: 605.367.8222**  
**[SIOUXFALLS.ORG/PARKS](http://SIOUXFALLS.ORG/PARKS)**



# GOLF COURSES

Tee off from any of our beautiful golf courses in the Sioux Falls area, all of which feature diverse terrain. Our courses were designed to accommodate players of all skill levels, from beginner to professional. In Sioux Falls you will find courses that include a wide open layout, courses with narrow fairways, or courses where many bunkers and water hazards may come in to play. So what are you waiting for? Grab a set of clubs and hit the links—our golf courses are waiting to be discovered by you.



## BAKKER CROSSING GOLF COURSE

With five sets of tees to play from, the 18-hole, par 71 golf course at Bakker Crossing can be tailored to create an appropriate challenge for golfers of almost any level. The course has characteristics of a links style course with water coming into play on 16 of the 18 holes.

**47172 CLUBHOUSE RD.  
SIOUX FALLS, SD 57108  
PH: 605.368.9700  
BAKKERCROSSING.COM**

## THE COUNTRY CLUB OF SIOUX FALLS

The Country Club of Sioux Falls features an 18-hole championship golf course as well as a 9-hole par 3 course. Nestled next to the Big Sioux River, The Country Club of Sioux Falls features plenty of mature trees, with well positioned bunkers that make for challenging, yet competitive play.

**3400 W. 22ND ST.  
SIOUX FALLS, SD 57105  
PH: 605.336.3737  
CCSF.CLUB**

## ELMWOOD GOLF COURSE

Elmwood is a 27-hole golf course with tree-lined fairways, domed greens, and smaller more classic-style bunkering. The championship 18-hole layout is a classic parkland course, while the East 9, their 9-hole course, is perfect for quick play.

**2604 W. RUSSELL ST.  
SIOUX FALLS, SD 57104  
PH: 605.367.7092  
SIOUXFALLSGOLF.COM**

## KUEHN PARK

Kuehn Park is a 9-hole par 30 golf course that is great for golfers of all abilities. Golfers will appreciate the quick pace of play that can be achieved at this beautiful course.

**2901 S. KUEHN PARK RD.  
SIOUX FALLS, SD 57104  
PH: 605.362.2811  
SIOUXFALLSGOLF.COM**



## MINNEHAHA COUNTRY CLUB

The 18-hole championship course at Minnehaha Country Club has received high honors from hosting the PGA TOUR Championships. The rolling terrain of this course is surrounded by groves of beautiful trees with lush fairways that creates an environment that is loved by golfers of all experience levels.

**3101 W. 22ND ST.  
SIOUX FALLS, SD 57104  
PH: 605.336.1085  
MINNEHAHACC.COM**

## NORTHERN LINKS GOLF COURSE

As the name suggests, on the northern edge of Sioux Falls you will find Northern Links. This 9-hole par 36 golf course features lush, large greens in addition to wide open spaces among the fairways.

**7701 N. CLIFF AVE.  
SIOUX FALLS, SD 57104  
PH: 605.334.6679  
NORTHERNLINKSGOLFCOURSE.COM**

## PRAIRIE GREEN GOLF COURSE

Prairie Green is a beautiful prairie links style golf course where you will experience generous fairways, stunning prairie wetlands, and well-bunkered greens. With four sets of tees, this course can be challenging from the back tees, but playable for all.

**600 E. 69TH ST.  
SIOUX FALLS, SD 57108  
PH: 605.367.6076  
SIOUXFALLSGOLF.COM**

## WILLOW RUN GOLF COURSE

With four sets of tees Willow Run's par 70 golf course continues to be one of the premier courses in Sioux Falls with a 4-star rating from Golf Digest, in addition to being a previous stop on the LPGA Symetra Tour. Golfers will experience a variety of challenges throughout this course as they take in the scenic landscape.

**8000 E. ARROWHEAD PKWY.  
SIOUX FALLS, SD 57110  
PH: 605.335.5900  
WILLOWRUNGOLFCOURSE.COM**



	Aerobics	Archery	Badminton	Ballroom Dancing	Baseball	Basketball	Baton Twirling	Billiards	BMX Racing	Boxing	Climbing	Curling	Cycling	Dancing	Equestrian	Fencing	Field Hockey	Fitness	Football	Frisbee	Golf	Gymnastics	Handball	Horseshoe	Ice Hockey	Ice Skating	In-line Skating
Denny Sanford Premier Center	✓	✓	✓	✓		✓	✓	✓	✓	✓		✓		✓		✓			✓			✓			✓	✓	✓
Sioux Falls Arena	✓	✓	✓	✓		✓	✓	✓	✓	✓		✓		✓		✓						✓					✓
Sioux Falls Convention Center	✓	✓	✓	✓		✓	✓	✓	✓	✓				✓		✓		✓				✓					
Sioux Falls Stadium					✓		✓																				
Howard Wood Field							✓							✓				✓	✓	✓							
Sanford Sports Complex	✓	✓	✓	✓	✓	✓	✓	✓		✓			✓	✓		✓	✓	✓	✓	✓		✓	✓		✓	✓	
Huether Family Match Pointe Tennis			✓																								
Power & Grace Gymnastics	✓																					✓					
Sanford Fieldhouse	✓	✓	✓				✓										✓	✓			✓	✓		✓			
Sanford Pentagon	✓		✓			✓	✓			✓				✓								✓					
Scheels IcePlex												✓													✓	✓	
South Dakota Junior Football Park		✓					✓							✓					✓								
Augustana University	✓		✓	✓	✓	✓	✓							✓				✓	✓			✓					
University of Sioux Falls	✓				✓	✓	✓							✓					✓			✓					
Midco Aquatic Center																											
Frontier Climbing & Fitness											✓							✓									
Baker Park Place															✓												
Great Bear Ski Valley																											
Harmodon Park					✓																						
Kuehn Park																					✓						
McKenna Park						✓																		✓			
Pasley Park					✓																						
Riverdale Park																											
Sherman Park					✓																						
Spencer Park																				✓							
Tomar Park																											
Tuthill Park																				✓							
Yankton Trail Park		✓					✓										✓			✓							
W.H. Lyon Fairgrounds	✓	✓				✓		✓					✓		✓	✓											✓



	Lacrosse	Martial Arts	Paintball	Pickleball	Power Tumbling	Racquetball	Rodeo	Rugby	Shooting	Shuffleboard	Skateboarding	Snow Skiing	Soccer	Softball	Street Hockey	Strength Training	Swimming	Synchronized Swimming	Table Tennis	Tennis	Track & Field	Triathlon	Volleyball	Water Polo	Weightlifting	Wrestling
Denny Sanford Premier Center		✓	✓		✓	✓	✓			✓	✓				✓	✓			✓	✓			✓		✓	✓
Sioux Falls Arena		✓	✓	✓	✓	✓	✓			✓	✓				✓	✓			✓	✓			✓		✓	✓
Sioux Falls Convention Center		✓		✓	✓	✓				✓			✓			✓			✓				✓		✓	✓
Sioux Falls Stadium														✓												
Howard Wood Field	✓												✓								✓	✓				
Sanford Sports Complex	✓	✓			✓			✓	✓					✓	✓	✓			✓	✓			✓		✓	✓
Huether Family Match Pointe Tennis																				✓						
Power & Grace Gymnastics					✓																					
Sanford Fieldhouse	✓	✓			✓								✓						✓				✓			
Sanford Pentagon		✓		✓		✓				✓						✓			✓				✓			
Scheels IcePlex																										
South Dakota Junior Football Park																										
Augustana University		✓			✓								✓	✓		✓	✓	✓	✓	✓	✓		✓		✓	✓
University of Sioux Falls		✓			✓								✓	✓		✓			✓		✓	✓	✓		✓	✓
Midco Aquatic Center																	✓	✓						✓		
Frontier Climbing & Fitness																										
Baker Park Place																										
Great Bear Ski Valley												✓														
Harmodon Park														✓												
Kuehn Park														✓			✓	✓								
McKenna Park																				✓						
Pasley Park														✓												
Riverdale Park	✓			✓																						
Sherman Park														✓												
Spencer Park																										
Tomar Park													✓													
Tuthill Park																										
Yankton Trail Park	✓												✓													
W.H. Lyon Fairgrounds		✓					✓		✓							✓			✓						✓	✓



Dedicated to your  
NEXT DESTINATION.

TRAVEL TRADE & LEISURE





Falls Park

## MAKE YOUR JOURNEY A MEMORY.

---

Travel for trade or leisure should be an experience you never forget – for all the right reasons. Whether you are a tour operator, independent traveler, or represent business or leisure groups, **Experience Sioux Falls** will passionately pursue the larger goals and detailed logistics of your travel planning and stay. If you don't leave here with a few great stories, we haven't done our job. We're excited for you to discover the creative spirit, the vibrant energy, and unique history of Sioux Falls, along with our commitment to making your journey memorable.



SculptureWalk



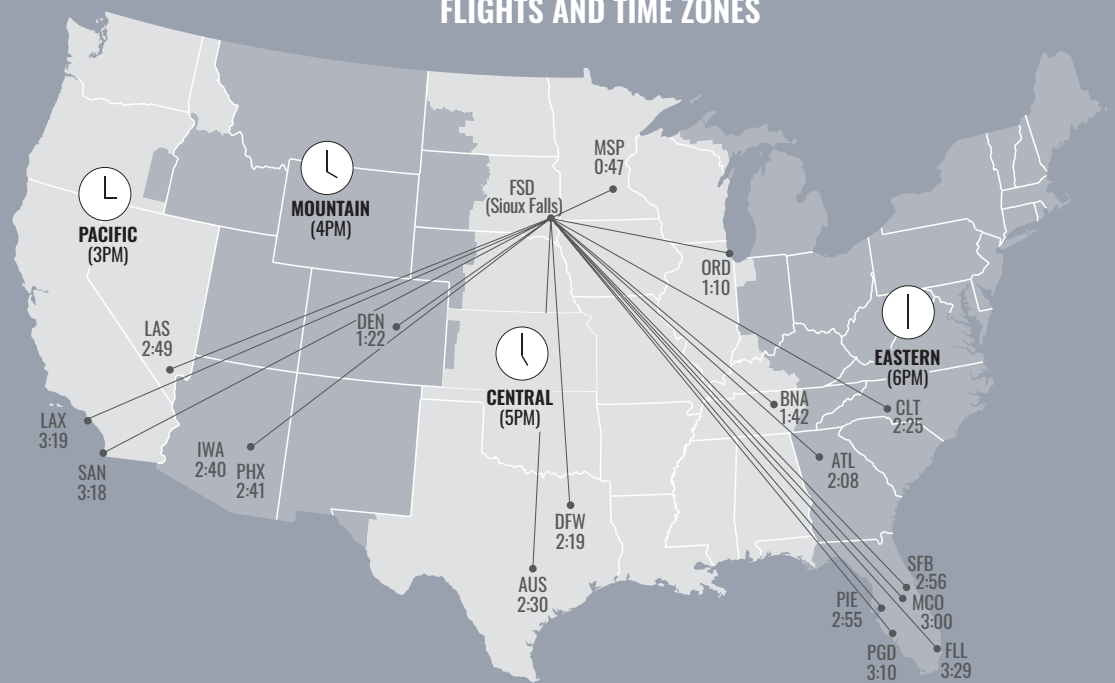
Stensland Family Farms

# DESTINATION LOCATION

## PORTS OF ENTRY

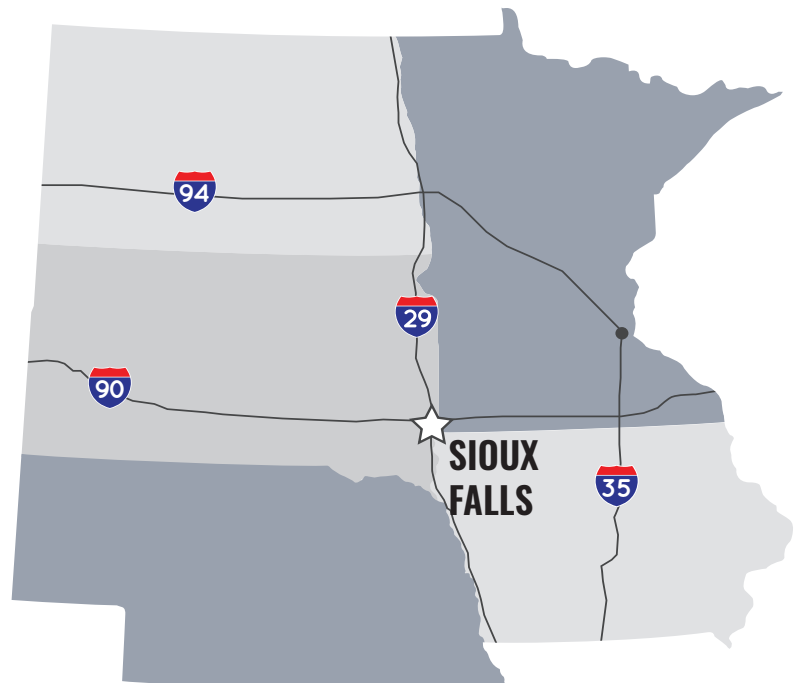
Dallas  
Chicago  
Minneapolis  
Denver  
Atlanta  
Phoenix

## FLIGHTS AND TIME ZONES



## MILES TO OTHER CITIES:

City	Miles from SF	Drive Time (hours)
Chicago, IL	573	8.5
Kansas City, MO	363	5
Rapid City, SD	348	5
Des Moines, IA	283	4
Fargo, ND	244	3.5
Minneapolis, MN	237	4
Omaha, NE	181	2.5
Sioux City, IA	87	1.5
Mitchell, SD	74	1





# GROUP TOUR SERVICES

Select Sioux Falls as your next group tour destination and you will encounter a dedicated and responsive team, committed to providing premier group tour services. We will connect you with attractions, help secure lodging and assist in providing restaurant options that suit your group's needs.

- Accommodation guidance and booking assistance.
- Custom itinerary planning to meet the interests of your group including timing and route design. Sample itineraries available.
- Step-on guides trained to provide a personalized tour of the city. Advanced reservations required. Nominal fees apply.
- Promotional materials prior to your arrival or for use during your visit including: brochures, visitor guides, maps, videos, and more.

Our passion for travel and the love of the road will shine bright as we work tirelessly to make your time with us memorable long after the trip is over.

## AVAILABLE FOR MOTORCOACH SERVICE

### SBI Charters

5100 W. 8th St.  
Sioux Falls, SD 57107  
605.334.6644  
Sbicharters.com

## WASTE DISPOSAL STATIONS

### Flying J Travel Center

5201 N. Granite Ln.  
Sioux Falls, SD 57107  
(Interstate 1-29, Exit 83)  
605.977.1438  
[Locations.pilotflyingj.com/us/sd/sioux-falls](http://Locations.pilotflyingj.com/us/sd/sioux-falls)  
Fee: \$12 per coach  
Use the RV Lane to access service

### Windstar Lines, Inc

3004 W. Maple St.  
Sioux Falls, SD 57107  
605.336.3339  
[Gowindstar.com/sioux-falls-sd.html](http://Gowindstar.com/sioux-falls-sd.html)  
Fee: \$25 per coach

### Reading Bus Lines

3401 N. Potsdam Ave.  
Sioux Falls, SD 57104  
1.800.468.2413  
[Readingbusline.com](http://Readingbusline.com)  
Fee \$50 per coach



Good Earth State Park

# HALF DAY HIGHLIGHTS

Only have four hours in Sioux Falls? Then these six stops are the must-sees. Falls Park is the namesake of the city and serves as the backdrop to a vibrant downtown bustling with art, shopping, food, and beverage.

- 1 Plan on spending at least an hour in the Falls Park area. This allows time for viewing the Falls from several different vantage points and experience a bird's eye view from the five-story viewing tower located inside the Visitor Information Center.
- 2 Stop at the Stockyards Ag Experience located in the historic horse barn at Falls Park. This treasure with farm to table interactive displays highlight the history and life of the Sioux Falls Stockyards (1917 - 2009) and the impact that both agriculture and specifically livestock production have had on the local economy.
- 3 Prior to leaving the park, indulge in homemade Stensland Family ice cream at the Falls Overlook Café, made just minutes away from the city with farm-fresh ingredients.
- 4 Head to Phillips Avenue, on the west side of Falls Park. SculptureWalk is a nationally renowned annual exhibit of outdoor sculptures displayed year-round in downtown. Grab a SculptureWalk guide and spend some time perusing the streets enjoying the 60+ sculptures. Admire the Arc of Dreams between 6th and 8th street, a massive 60-ton permanent sculpture that spans the Big Sioux River and towers seven stories above the water. Plan at least an hour, especially to take a break for a delectable treat at one of the darling shops or enjoy a beverage on an outdoor patio along Phillips Avenue.

- 5 The Washington Pavilion is up next. This downtown gem is the region's home for both performing and visual arts and housed in a historic building which was the city's first high school. There are eight galleries featuring local and regional artists as well as works from across the globe. The south side of the building is a three-story state-of-the-art science center that offers over 100 hands-on exhibits. Schedule a gallery tour with one of the Pavilion's knowledgeable docents to further enhance your experience.
- 6 With just an hour left, take a short walk down Main Street to make time for history at the Old Courthouse Museum. The beautifully restored 1800's building is constructed of native pink quartzite and has three floors of regional history exhibits that lay the foundation for understanding the early days of Sioux Falls. Along with the stunning architecture of the building, view the ever-changing rotating exhibits that cover a variety of topics and collections. The museum is free to the public and has extended hours on Thursday evening.

## Falls Park Visitor Information Center

[Experiencesiouxfalls.com/FallsPark](http://Experiencesiouxfalls.com/FallsPark)

## Stockyard's Ag Experience

[Stockyardsagexperience.org](http://Stockyardsagexperience.org)

## Falls Overlook Café

[Fallsoverlook.com](http://Fallsoverlook.com)

## Washington Pavilion

[Washingtonpavilion.org](http://Washingtonpavilion.org)

## Old Courthouse Museum

[Siouxlandmuseums.com](http://Siouxlandmuseums.com)

## SculptureWalk

[Sculpturewalksiouxfalls.com](http://Sculpturewalksiouxfalls.com)

For hours, special events, and donation options please visit each attraction's website for more information.





# A PERFECT MULTI-DAY TOUR

Fuel up for the day with a cup of joe and a fresh baked pastry at one of many local coffee shops.

## DAY 1: MORNING STOPS

To truly understand and appreciate the history of Sioux Falls, plan to visit the Old Courthouse Museum and Pettigrew Home and Museum. These two city treasures are operated under the umbrella of the Siouxland Heritage Museums and together provide guests with foundational history of the region.

### OLD COURTHOUSE MUSEUM

This restored, 1890's Richardsonian Romanesque building, constructed of native pink quartzite, is a National Historic Landmark that features an 1893 clock tower and houses permanent and rotating exhibits focusing on the natural and cultural histories of the Siouxland region. No admission fee.

[Siouxlandmuseums.com](http://Siouxlandmuseums.com)

### PETTIGREW HOME & MUSEUM

Richard F. Pettigrew, South Dakota's first full-term U.S. senator, lived in this 1889 beautifully restored Queen Anne home for 15 years. Take the 40-minute guided tour and learn how Pettigrew's progressive insight played a vital role in the early development of Sioux Falls. No admission fee.

[Siouxlandmuseums.com](http://Siouxlandmuseums.com)



Pettigrew Home & Museum

### FALLS PARK

Over 128-acres on the edge of the city's historical downtown make up Falls Park, featuring a triple-cascading waterfall where 7,400 gallons of water fall each second. Experience the sounds of the roaring falls up-close at one of the many viewing platforms or view from the top of the five-story observation tower inside the Visitor Information Center.

[Experiencesiouxfalls.com/FallsPark](http://Experiencesiouxfalls.com/FallsPark)

### FALLS OVERLOOK CAFÉ

Enjoy a delightful patio lunch made from local ingredients sourced from Stensland Family Farms a few miles outside the city. The café is housed in a historic hydroelectric plant with a great view of the falls.

[Fallsoverlook.com](http://Fallsoverlook.com)

### STOCKYARDS AG EXPERIENCE

Located in a historical horse barn at Falls Park, visitors can learn the story of agriculture's impact in the region and the history of the former Sioux Falls Stockyards (1917 - 2009). Vibrant historical images and high-tech interactive displays detail the world of food production and the process of farm to table. No admission fee.

[Stockyardsagexperience.org](http://Stockyardsagexperience.org)



Old Courthouse Museum



Stockyards Ag Experience

## DAY 1: AFTERNOON STOPS

Take a short drive and plan on spending the afternoon at three separate attractions just minutes north of Sioux Falls. At McCrossan Boys Ranch, be inspired by one woman's philanthropy and how it has impacted generations of young men. At EROS Data Center, experience a glimpse of the study of the earth's surface and how its imagery assists researchers across the globe, while Wilde Prairie Winery's peaceful setting will provide a welcome respite from the hustle and bustle of life.

### MCCROSSAN BOYS RANCH

Melinda Bell McCrossan, founder of McCrossan Boys Ranch, had a vision to create "a home where boys would find New Hope for a Better Life". 60+ years later, her legacy lives on. The new Robert L. Nielsen Visitor Center chronicles the history of the ranch, along with the day to day activities of the young men who call the ranch home. No admission fee.

[Mccrossan.org](http://Mccrossan.org)

### U.S. GEOLOGICAL SURVEY EARTH RESOURCES OBSERVATION AND SCIENCE (EROS) CENTER

The USGS EROS Data Center serves as the national archive of remotely sensed images of the earth's land surface acquired by civilian satellites and aircraft. The center studies land change and produces land change data products used by researchers, resource managers and policy makers across the nation and around the world. EROS operates the Landsat satellite program with NASA and maintains the largest civilian collection of images of the Earth's land surface in existence. Guided tours are free to the public.

[Eros.usgs.gov](http://Eros.usgs.gov)

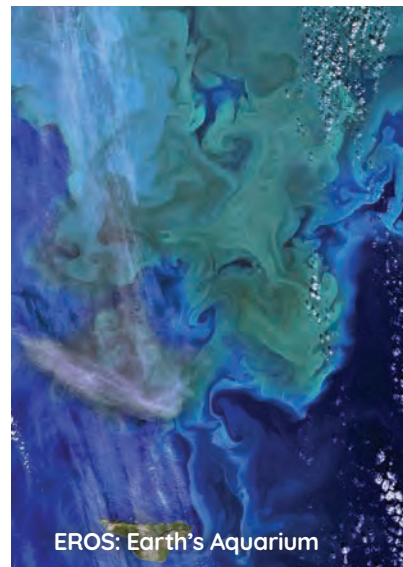
### WILDE PRAIRIE WINERY

Enjoy a peaceful time out on the prairie at this rustic farm setting just outside of Sioux Falls city limits. Grapes have been growing on the vines at this family-run winery for 25 years, and there are no signs of slowing down anytime soon. Wilde Prairie Winery offers plenty of opportunities throughout the summer to catch some live music as you sit back, relax, and savor your glass of wine. Complimentary glass given with each paid tasting.

[Wildeprairiewinery.com](http://Wildeprairiewinery.com)



McCrossan Boys Ranch



EROS: Earth's Aquarium



SculptureWalk

## DAY 1: EVENING STOP

### SCULPTUREWALK

A nationally renowned annual exhibit of outdoor sculptures is displayed year-round in downtown Sioux Falls. Spend time perusing the streets enjoying the 60+ sculptures and take time to admire the Arc of Dreams between 6th and 8th street, a massive 60-ton permanent sculpture that spans the Big Sioux River and towers seven stories above the water. Plan at least an hour to fully appreciate the art and to understand the perspective of the artists.

[Sculpturewalksiouxfalls.com](http://Sculpturewalksiouxfalls.com)





Stensland Family Farms



Cathedral of Saint Joseph

## DAY 2: MORNING STOPS

### STENSLAND FAMILY FARMS

A family-owned 200-cow dairy just 20 minutes from Sioux Falls features an on-farm creamery where they produce freshly bottled milk, ice cream, aged cheese, and cheese curds. The one-hour farm tour includes a Robotic Milking System, creamery viewing, bottle-calf feeding along with milk, cheese, and ice-cream samples. Reservations required: \$13 per person.

**[Stenslandfamilyfarms.com](http://Stenslandfamilyfarms.com)**

### GOOD EARTH STATE PARK AT BLOOD RUN

The park sits along the Big Sioux River just minutes southeast of Sioux Falls and was once inhabited by an Oneota Indigenous civilization from 1300 - 1700 AD. No other Oneota site of this size and integrity is known to exist in the United States. The visitor center features a variety of exhibits and educational programming focused on the cultural and historical significance of the Blood Run site. South Dakota state park sticker required. Group tour admission: \$4 per person.

**[GFP.sd.gov](http://GFP.sd.gov)**

## DAY 2: AFTERNOON STOPS

### CATHEDRAL OF SAINT JOSEPH

This Romanesque and French Renaissance cathedral was completed in 1919 and serves as the corner stone of the Cathedral Historic District. The chief designer of the building was Emmanuel Masqueray, the French architect who also designed the St. Paul Cathedral. A complete restoration took place in 2011 and returned it to its original grandeur. Both self and guided tours are available. No admission fee.

**[Stjosephcathedral.net](http://Stjosephcathedral.net)**

### BUTTERFLY HOUSE & AQUARIUM

A 10,000-gallon Aquarium Gallery displays hundreds of different species of fish and corals. From coral reefs and anemones, to seahorses and tangs, the saltwater exhibits are home to marine life from the Indo-Pacific region to the Caribbean. The Butterfly Room is a jungle-like, balmy 80 degree atmosphere and home to over 800 butterflies from every corner of the globe. Admission fee.

**[Butterflyhouseaquarium.org](http://Butterflyhouseaquarium.org)**

For a complete listing of events go to  
**[ExperienceSiouxFalls.com/Events](http://ExperienceSiouxFalls.com/Events)**.

For hours, special events, and donation options please visit each attraction's website for more information.





Butterfly House & Aquarium

## THE USS SOUTH DAKOTA BATTLESHIP MEMORIAL

Explore the outline of the USS South Dakota and a museum dedicated to its life and service in World War II. The USS South Dakota (BB-57) was a US Navy battleship in active service from 1942 until 1947 and one of the most decorated ships in WWII. No admission fee.

[USSSouthDakota.com](http://USSSouthDakota.com)

## WASHINGTON PAVILION

This downtown gem is the region's home for both performing and visual arts and housed in a historic building which was the city's first high school. There are eight galleries featuring local and regional artists as well as works from across the globe. The south side of the building is a three-story state-of-the-art science center that offers over 100 hands-on exhibits along with a CineDome theatre. Schedule a gallery tour with one of the pavilion's knowledgeable docents or take in one of the many shows in the Mary W. Sommervold Hall. Admission fee.

[Washingtonpavilion.org](http://Washingtonpavilion.org)

## EVENING ACTIVITY OPTIONS

### EVENING ACTIVITY OPTIONS

Along with dinner at one of the many group tour friendly restaurants, evening entertainment abounds in Sioux Falls. The Washington Pavilion, Orpheum Theater, Denny Sanford PREMIER Center, or Levitt at the Falls all provide a plethora of options for group tour entertainment.



Levitt at the Falls



The USS South Dakota Battleship Memorial



Hattie Phillips Portrayal



# GROUP TOUR FRIENDLY RESTAURANTS



Blue Rock Bar & Grill

## ALL DAY CAFÉ

All Day Café serves recipes from scratch using the best possible ingredients with a modern comfort food twist. Edgy, healthy, fresh, and fun.

2121 W. 41st St.  
605.274.7711  
Alldaycafe.net

## CARNAVAL BRAZILIAN GRILL

Contemporary restaurant serving bottomless plates of Brazilian food, from skewered meat to salads.

2401 S. Carolyn Ave.  
605.361.6328  
Carnavalbraziliangrill.com

## BLUE ROCK BAR & GRILL

Blue Rock Bar & Grill features unique flavors, detailed touches and fusion elements that give you all the decadence of fine dining with the casual atmosphere of everyday. Appetizers, sandwiches, burgers, steaks, and more.

4021 Bobhalla Dr.  
605.271.2500  
Bluerockbarandgrill.com

## CHEF LANCE'S ON PHILLIPS

You will feel right at home at Chef Lance's on Phillips. This quaint eatery has gained a huge following from the locals, with good reason. Try mouthwatering dishes such as the Herb Crusted Sea Bass or Beef Wellington. Bus tour reservations for dinner only.

431 N. Phillips St.  
605.271.7800  
Cheflance.com



All Day Café



Josiah's Coffeehouse & Café

### CHERRY CREEK GRILL

An American-style restaurant serving diverse options that are always fresh, never frozen. Over 100 items including prime rib, pastas, burgers, wings, salads, and homemade soups and chili.

3104 E. 26th St.  
605.336.2333  
Cherrycreek-grill.com

### GRANITE CITY FOOD & BREWERY

Casual chain eatery with an American comfort-food menu plus craft beers brewed on-site. Home of the “Lawless Breakfast”.

2620 S. Louise Ave.  
605.362.0000  
Gcfb.com

### CROOKED PINT ALE HOUSE BAR & GRILL

Warm, welcoming atmosphere known for a delicious menu of traditional pub foods including their award-winning Lucy, pot pies, and Reubens. Great variety of local brews on tap.

2020 W. Russell St.  
605.331.2050  
Crookedpint.com/Sioux-falls/

### GRILLE 26 BY MINERVAS

Fresh authentic ingredients and a casual, contemporary ambience come together at Grille 26. Flavorful, affordable creations like flame-roasted pizza, burgers, steak, and chicken entrées make an everyday occasion feel like something special.

1716 S. Western Ave.  
605.444.1716  
Grille26.com

### FALLS OVERLOOK CAFÉ

Fresh farm to table salads, soups and sandwiches offered in a lofty space with views of Falls Park. Serving dozens of flavors of locally produced Stensland Family Farm ice cream.

825 N. Weber Ave.  
605.367.4885  
Fallsoverlook.com

### JOSIAH'S COFFEEHOUSE & CAFÉ

Cheerful daytime café serving espresso-based drinks where artisan baristas make every cup to order, handmade pastries and light café fare. Flatbreads, salads, soups, and hot and cold sandwiches.

104 W. 12th St.  
605.759.8255  
Josiahcoffee.com



Granite City Food & Brewery



Crooked Pint Ale House Bar & Grill



Grille 26 by Minervas





### KALADI'S BISTRO

Breakfast burgers, surf-n-turf and Java drinks are featured at this homey spot with a relaxed vibe.

1716 S. Minnesota Ave.  
605.339.3322  
Kaladisbistro.com



### MINERVAS

An icon for outstanding food and impeccable service, guests can enjoy in-house aged steaks, fresh seafood, chops, classic pasta dishes, the freshest salads, and house-made desserts. One of the Midwest's favorite dining destinations.

301 S. Phillips Ave.  
605.334.0386  
Minervas.net/minervas-sioux-falls/

### LEONARDO'S CAFÉ

Located inside the Washington Pavilion, featuring show themed, on-site mouthwatering pre-show dinners or daily lunch specials.

301 S. Main Ave.  
605.731.2384  
Washingtonpavilion.org

### R WINE BAR & KITCHEN

Named the best Italian restaurant in South Dakota. Delicious house made pasta and salads. Extensive wine selection and local craft beers. Live music several nights every week.

322 E. 8th St.  
605.271.0814  
Rwinebar.com

### LOOK'S MARKETPLACE

Since 1883, Look's has been Sioux Falls' premier meat counter. Look's has since expanded to include a bakery, coffeehouse, butcher shop, cheese and charcuterie, as well as brewery and full-service restaurant. It is now the must visit food and drink destination in the Midwest.

500 E. 69th St.  
605.336.3104  
Looksmarket.com

### ROAM KITCHEN + BAR

A place where the wild frontier meets contemporary charm in a comfortable reclaimed space. ROAM features a rustic scratch kitchen focused on wood-fire cooking and extensive bourbon, beer and wine offerings.

4525 W. Empire Pl.  
605.215.0020  
Roamkitchen.com



200 N. PHILLIPS AVE., SUITE 102  
SIOUX FALLS, SD 57104  
PH: 605.275.6060  
[EXPERIENCESIOUXFALLS.COM](http://EXPERIENCESIOUXFALLS.COM)





experience  
**SIOUX  
FALLS**  
south dakota



200 N. PHILLIPS AVE., SUITE 102  
SIOUX FALLS, SD 57104  
PH: 605.275.6060  
[EXPERIENCESIOUXFALLS.COM](http://EXPERIENCESIOUXFALLS.COM)